

# Proposed New Chelsea Wastewater Treatment Plant

**Editor's Note:** This article is being published with the intent of clarifying the issues and facts associated with the proposed construction of the new wastewater facility for the Village of Chelsea. It has been written by members of the Village Council and administrators and represents the best and most factual information available to help village residents understand the many facets of a complicated issue.

Additionally, residents are encouraged to call their elected officials or village administrative officers with any questions that they might have regarding the proposed wastewater treatment facility. It is important that any questions you may have are answered so that an intelligent and informed decision can be made by each voter on the millage issue.

Currently, Chelsea and Manchester are the only two communities in Washtenaw county that are not in substantial compliance with the Federal Clean Water Act.

Our average quarterly bill for sewer service in Chelsea is about \$20 per household. It is this low because, during the year, we are dumping millions of gallons of raw, untreated sewage into Letts Creek and the Huron River system. Household costs for other communities, which are in compliance, are \$40 and higher.

## Chelsea Is One of Only Two Washtenaw County Communities Not in Compliance

In most cases, these are before tax expenses and the real cost to taxpayers is substantially lower.

There is no way, under the Federal Clean Water Act, that Chelsea can continue to save money with its present dirty water act. Whatever it may cost to obey the law and protect the public health will be pennies per day.

Another important consideration is that as more homes and industries are established in Chelsea over the next 15

years, the lower our millage rate will be. Thus, even a modest increase in Chelsea's tax base will reduce household costs.

A final thought on the treatment plant is the consideration of the costs involved if the new facility is not built. There are social costs which are hard to put into a dollars and cents form.

Chelsea, without the new facility, will be a polluter, damaging not only its own immediate environment, but the en-

vironment of all the Letts Creek downstream property owners.

Even if the State and Federal government are suddenly to decide to not force Chelsea to comply, we question whether Chelsea wants the image it might take on if it continues to pass untreated sewage into Letts Creek.

Additionally, it should be understood that the Water Resources Commission has adopted a Municipal Compliance Plan for Michigan that calls for total compliance with the Clean Water Act on a state-wide basis by the end of 1988. Thus, the State is ready to apply the full force of the enforcement options which the Clean Water Act provides.

When this is viewed with the knowledge that the grants program in the President's new budget will be eliminated over the next two to three years, the only sensible route to follow is completion of the project.

### QUOTE

"One of the difficult tasks in the world is to convince a woman that even a bargain costs money."  
—E.W. Howe

ONE HUNDRED-FIFTEENTH YEAR—No. 40

CHELSEA, MICHIGAN, WEDNESDAY, MARCH 5, 1986

20 Pages This Week

# The Chelsea Standard

25¢  
per copy



THE CONTEMPORARIES, of Chelsea High school, were division I winners at the district Solo and Ensemble Festival held Saturday, Feb. 22 at Eastern Michigan University. In the front row, from left, are Kristina Steffenson, Lori Jodelle, Carrie Collinsworth, Krista

Smith, Chris Basso, Valerie Stoker and Karla Heard. In the back row, from left, are Martha Weber, Jimmie Ritter, Amy Wolfgang, Cindy Kvarnberg, Susan Schenck, Angie Welch, Maria Galla, Jeanne Castillo, and director June Warren. Not pictured is Kelly Burke.

## Stratton L. Rademacher Fatally Injured in Crash Near Traverse City

Stratton L. Rademacher, the 23-year-old son of William and Marlene Rademacher, died last Thursday morning of injuries sustained in an automobile accident near Traverse City.

The 1980 Chelsea High school graduate was returning home from Boyne City late last Wednesday night. He and a Chelsea friend had driven to Boyne City to retrieve Rademacher's automobile, that had broken down earlier. Rademacher was following his friend home when the accident occurred.

According to the Antrim County Sheriff's Department, Rademacher tried to pass another automobile on a snowy stretch of US-131, about five miles north of Mancelona, and struck a north-bound car. He died early the next morning.

Rademacher had been living with his family in Chelsea since he finished his bachelor's degree in speech communications at Colorado State University in



STRATTON L. RADEMACHER

December. He had been working at the Chelsea gas station for "pin money," according to his mother, until he could find a job.

Rademacher almost had a chance to launch his broadcasting career, his mother said.

Rademacher had originally gone to Boyne City to interview for a sportscasting job at a small radio station. The day after he died, his family received a telephone call offering their son a job at the station.

"His dream was to become a sportscaster," his father said.

Rademacher had pursued that dream since his days at Chelsea High school, where he was active in the speech and communications programs.

Several hundred friends and relatives paid their final respects to Rademacher Monday morning.

Other survivors included his brother, William B., and sister Laura; his maternal grandmother, Mrs. Lloyd Heydlauff, and aunts and uncles George and Carol Heydlauff, of Chelsea, and Tom and Carol Rademacher, of Clarkston.

A Strat Rademacher Memorial Scholarship Fund has been established in his memory.



THE MADRI-GUYS were division II winners at the district Solo and Ensemble Festival at Eastern Michigan University Feb. 22. In the front row, from left, are David Teare, Dale Cole and Tucker

Lee. In the second row, from left, are David Mayer, Norman Weber, Tom Carlson, and director June Warren.

## Vocal Music Dept. Offers Free Concert

Chelsea High school vocal music department will present a pre-festival concert on Tuesday, March 11, at 7:30 p.m. in the George Prinzing Auditorium. Special features include the Contemporaries and Madri-Guys performing music just done at the Solo and Ensemble Festival on Feb. 22.

The Contemporaries will also sing favorites such as "My Prayer" and "Mr. Sandman."

The Madri-Guys get up-to-date with "Longest Time" and "Longer."

Kristina Steffenson and Tana Hermosillo will perform solos from the festival.

The Concert Choir will be performing two songs for their upcoming festival on March 13, "Sing Aloud" and "Let All the Earth."

For the lighter section of the program the choir will demonstrate some dance steps in "Land of a Thousand Dances," choreographed by Jill LaCroix. The choir sings "Truly" and "The World Is Yours."

The concert is free and open to the public.

## Children Playing In Gravel Pile Escape Death

Several Chelsea children came dangerously close to hurting or killing themselves last week as they were playing in the county road commission lot at the end of W. Middle St., Chelsea police reported.

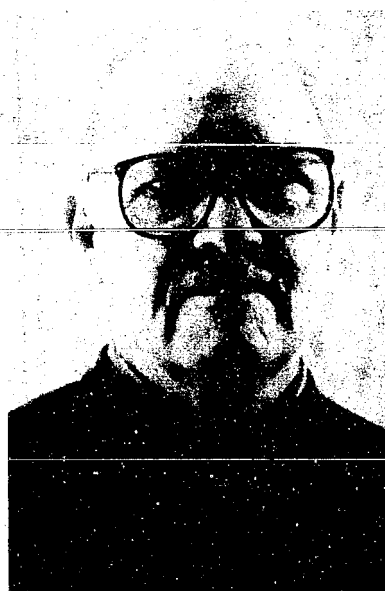
According to police chief Lenard McDougall, the children found a frozen pile of gravel, and decided to dig a tunnel into it.

"If those children had dug back into it, and the pile had caved in, we never would have found them," McDougall said.

"Parents should be aware of how dangerous that lot is. There's a lot of hazardous equipment, and there are piles of salt and sand."

After discovering the tunnel, and making sure there were no children inside, McDougall requested that the road commission cave in the gravel pile.

(Continued on page three)



WILLIAM STOREY



KATHLEEN CHAPMAN

## Meet Your Candidates

The following is the fourth in a series of stories concerning candidates for the various offices that will be voted upon in the March 10 village elections. The hope is that it will enable you to cast a more informed vote. The Chelsea Standard does not officially endorse any candidate for any office.

Kathleen Chapman is challenging incumbent William Storey in the March 10 village elections for the office of village treasurer.

The position has an annual salary of \$2,400.

The treasurer is responsible for collecting all real and personal property taxes owed to the village. The treasurer mails out tax statements, answers tax questions, keeps track of collections, including the delinquent tax list, and acts as a one-person tax collection agency for the village. He or she is also required to report at least annually to the village council.

William Storey, 216 Jefferson St., has been treasurer since October of 1984 when he was initially appointed to fill the vacancy left by Mary Harris, who resigned.

He ran unopposed in last year's village elections to fill out the term. However, Mrs. Chapman mounted a strong, last-minute write-in campaign and Storey won by a few votes.

Storey has a long history of public service to the village. He previously served as Chelsea's civil defense director, a member of the village council, heading of the planning commission and president of the board of education.

He was a charter member of the Chelsea Jaycees and has been active in the Chelsea Methodist church for more than 25 years.

He is a graduate of Michigan State University and a retired major in the U.S. Marine Corps.

Storey retired from Michigan Bell four years ago, and is currently a partner in an Ann Arbor consulting firm, Prieskorn and Storey, which specializes in data communications.

Storey and his wife, Jean, came to Chelsea in 1950.

Storey estimates he's spent about 700 hours in the last year working as treasurer.

"I've spent more time on the job than I originally intended to," he said.

Storey said he has been able to make some changes and "get rid of some redundancies," in the tax collecting system since he took office. He said there are a third fewer delinquencies and half as much money outstanding.

Kathleen Chapman, 629 N. Main St., has "never been in the political arena," in her own words, but has been extremely active in Chelsea volunteer organizations for many years.

Mrs. Chapman came to the village of Chelsea in 1950, although she has lived in the area all her life.

She worked on a farm until 1950, and then spent 25 years working for the Co-operative Extension Service in Ann Arbor.

While with the service, she was (Continued on page three)

## Contributions to Depot Fund Top \$7,000 After Ten Days

In the first 10 days since a fund appeal for the Chelsea Rail Depot has been mailed to residents of the Chelsea School District, \$7,060 has been received from families and individuals.

According to Gloria Mitchell, treasurer of the Chelsea Depot Association, many families made separate contributions for spouses, children and grandchildren so that each received a lithographed personal Certificate of Donorship.

All certificates, which are historical keepsakes, have been registered and mailed on the day the contribution arrived. The

registry of donors will be maintained by the depot association and preserved as a permanent part of the archives of the Chelsea Area Historical Society.

February donations from individuals and families, added to the \$16,000 contributed by major local organizations to purchase the depot, plus \$8,500 in organizational pledges for 1986, represent a starting capital of more than \$31,000 for the depot association.

Thus far, 148 Donor Certificates have been issued. Among them were two honorary certificates awarded in gratitude to Congressman Carl Pursell and

his district co-ordinator, Cynthia Hudgins for their help in acquiring ownership of the 106-year-old station.

"We think our public campaign for restoration of the depot is off to a heartening start," treasurer Mitchell stated. "The average contribution has been most generous. There are also numerous individuals and families in the school district who have not yet responded to our appeal. The lag is understandable with Christmas just behind and three layers of taxes straight ahead."

"We are strong enough right (Continued on page three)

Published every Wednesday at 300 N. Main St., Chelsea, Mich. 48118 and second class postage paid at Chelsea, Mich. 48130 under the Act of March 3, 1879. Postmaster: Send address changes to The Chelsea Standard, 300 N. Main St., Chelsea, Mich. 48118.

Subscription Rates (Payable in Advance)	
In Michigan:	Outside Michigan:
One year in advance \$18.00	One year in advance \$12.50
Six months \$6.50	Six months \$8.50
Single copies mailed \$ .50	Single copies mailed \$ .75

**DEADLINES**  
News Notices Monday, Noon  
Display Advertising Thursday, 5 p.m.  
Classified Advertising Saturday, Noon  
Late Classified Ads Monday, Noon

**OFFICE HOURS**  
Monday-Friday 8:30-5:00 p.m.  
Saturday 9:00-12 Noon

**MEMBER NATIONAL NEWSPAPER**  
Association Founded 1865

National Advertising Representative  
MICHIGAN NEWSPAPERS, INC.  
827 N. Washington Ave.  
Lansing, Mich. 48906

## JUST REMINISCING

Items taken from the files of The Chelsea Standard

### 4 Years Ago . . .

**Tuesday, March 2, 1982—**  
Seeking three village trustee posts in next Monday's election are six candidates. Three, Stephanie Kanten, Loren Keezer and Joseph Merkel, are incumbents. Vying to secure positions as trustees are Ishmael Picklesimer, Herman Radloff and Jeanene Riemschneider.

Reuben Lesser, a long-time farmer on Chelsea-Manchester Rd., received a special commendation from the Michigan Legislature, signed by Michigan Gov. William G. Milliken and Representative Mary Keith Ballantine, recognizing Lesser's courage and ability to overcome his multiple handicaps as well as serving as an inspiration to all who have had the opportunity to know him.

This week of March 1 through March 6 is observed nationally as "Music in Our Schools." The question, "Why Music?" is often asked in these pressing economic times. In a battle of balancing budgets and dwindling dollars, music programs face serious cutbacks, if not complete elimination.

The varsity Bulldogs ended their basketball season with an 85-65 win over South Lyon. Pacing the team was David Wojcik with 22 points on 11 of 14 floor shots for 79 percent. David Kiel had 13, Mike Bareis 11, John Welton and David Mann eight each, Mary Steinhauer seven, Ken Nadeau six, Carl Pate four, and Toby Boyd, Matt Villeneuve and Darren Pierson each chipped in two.

Dexter downed Western to

clinch their first in 11 years SEC championship. SEC final standings were Dexter 9-2, Milan 7-4, Lincoln 7-4, Chelsea 6-5, Saline 5-6, Tecumseh 5-6 and JC Western 0-11.

Chelsea's swimmers won their final dual meet over Willow Run last week with Chelsea 135.5, Willow Run 55.5, and ended their season with a 10-1 record.

Two of the 15 swimmers going to the State Meet are Dave Mason who broke the medley relay, 500 free school record and Sean Oxner who is second for the 500 free school record.

### 14 Years Ago . . .

**Thursday, March 2, 1972—**  
Bulldog cager Ron Sweeney was recently chosen unanimously for the Southeastern Conference All-League team. Jeff Schmidt was named to the second team, and Todd Sprague received honorable mention.

A 40-year-old picture in this issue of The Standard featured roundballers of the 1932 Chelsea High school basketball team who graced Chelsea High's courts: Carl Schneider, Walter Mayer, Russell McLaughlin, Dale Kern, Harvey Lixey, Donald Adam, Ren Hutzel and Coach Thayer.

For 12 years in succession, Chelsea's Future Farmers of America have come in first in district parliamentary procedure contests. This year's winners are, Dan Gaunt, team vice-chairman; Neil Bollinger, FFA secretary; Mark Ruhlig, FFA advisor; Marty Straub, team chairman; and Ted Hinderer, Larry Hopkins and Mike Hergert, team members.

Chelsea's FFA teams have won district championships in 21 out of the past 22 years and have won the last three out of four regional championships.

Yesterday was a big day for Warren Spaulding—his 89th birthday. His most unexpected birthday present was a card from President Nixon. "I wish to extend my warmest congratulations

(Continued on page six)

## MICHIGAN MIRROR

By Warren M. Hoyt, Secretary, Michigan Press Association

### Legislators Visit Michigan Troops

**Training in Honduras**  
Michigan's Adjutant General Vern Andrews returned recently from a four-day fact finding mission to Central America. Departing with Andrews on Feb. 17 were Warren Hoyt, executive director of the Michigan Press Association, Blair Bedient, publisher of daily newspapers in Albion and Marshall, and nine members of the Michigan Legislature. They included: Senator Kirby Holmes, R-Utica, and Representatives Mickey Knight, R-Muskegon; Charles Mueller, R-Linden; Ralph Ostling, R-Roscommon; Richard Fitzpatrick, D-Battle Creek; Michael Nye, R-Litchfield; Philip Hoffman, R-Horton; Robert Bender, R-Middleville, and Perry Bullard, D-Ann Arbor.

Primary purpose of the trip was to view training exercises being conducted in Honduras by Michigan Army National Guard personnel of the 119th Field Artillery's B Battery, based in Albion.

The Michigan Army Guard arranged the trip with U.S. Defense Department approval, to try to offset some of the negative publicity surrounding the United States' activities in Central America.

The Michigan legislators and members of the press were flown on a Georgia Air National Guard C-130 Hercules from Battle Creek Air National Guard Base to Panama, where they received intensive briefings by high ranking military officials of the U. S. Southern Command including its Commander in Chief (four star) General John R. Galvin.

In response to critics who say the Army Guard's participation in Honduras is engineered to provoke an attack by Nicaraguans, the legislators were told this was false. Lt. General Emmett Walker stated "They're wrong. We are training our soldiers to be as qualified as possible." He went on to say that to read and listen to some of the comments you'd think training the Guard overseas was something new. "It isn't. We've been training Guard units overseas for years—in Cen-

tral America and around the world—in 44 countries."

Asked about the safety of Michigan Guardsmen in Honduras, Adjutant General Vern Andrews said, "they are as safe in Honduras as in any of the other countries we've trained in around the world." He pointed out that more than 20,000 Army National Guard soldiers have trained in Central America in the past three years without a single incident, and that the host country will provide the security.

He also cited the humanitarian needs provided by the Guard's service there. U. S. medical personnel inoculate and treat natives and livestock in the region, while military engineering units build miles of badly needed roads. All of which, Andrews said, helps build good will with our Central American neighbors as well as provide meaningful and readiness training for our troops.

Following the series of day-long briefings in Panama, the group was flown to Palmarola Air Base in Central Honduras for another briefing by the commander of all U. S. troops in Honduras, before being transported in Army Huey helicopters to remote mountain training sites of Michigan Guardsmen.

Swooping in and out of makeshift landing zones in wilderness training areas, Michigan legislators experienced simulated battle field conditions, dined on MREs (Meal Ready To Eat), consisting of mostly dehydrated food which were designed to replace the familiar "C" and "K" rations used by our military for decades, and observed first hand the Guard troops from Albion's field artillery unit firing live shells at an unseen target over a mountain some six miles away.

During the shelling, almost as if it were pre-planned, the sunny skies gave way to a torrential downpour which added drama to the scene, as well as a few wet seats for the helicopter flight to the Honduran Capital of Tegucigalpa, climaxing the Honduran tour with an evening reception and briefing on the country's current political and economic cli-

mate at the home of the U. S. Ambassador to Honduras.

Concluding the events of the past few days, the legislators had an opportunity to reflect upon what they had observed and experienced during their whirlwind tour, during the long and tiring flight back to Battle Creek.

A minority point of view was expressed by Representative Perry Bullard, who appeared to be the only legislator on board who was still not convinced that our Guardsmen should be in Honduras. He was appreciative, however, of the opportunity to witness for himself what was going on down there and how our troops were being trained.

Representative Phil Hoffman admitted having some concern and apprehension about the trip, but stated, "most of it was brought about by a perception created by the media. After having visited Honduras, attending the briefings, and making personal observations out in the field, I feel less apprehensive about my own security, as well as that of our Guardsmen down there," he said.

Representative Michael Nye said he found the briefings to be one of the highlights of the trip.

General Andrews pointed out that "the National Guard represents 48% of total U. S. combat ready strength." Citing that fact, most legislators in the group agreed that this type of training exercise and deployment experience is necessary and underscores the role of the National Guard in the nation's total defense policy.

As the giant plane touched down on the frigid, snow-banked runways at Battle Creek, everyone agreed the fact finding mission which concluded in sunny, 90 degree Honduras earlier that day wasn't quite long enough!

**BUY-SELL-RENT-HIRE... Classified Ads DO IT BETTER**

**PALMER PUTS YOU IN THE DRIVER'S SEAT FOR \$128<sup>86</sup>\***

**1986 ESCORT FRONT WHEEL DRIVE HATCHBACK**

\*Affordable payment plan. 48-mo. lease. Total of payments - \$6,185.28 with approved credit. Pay only 1st mo. payment and \$150.00 refundable security deposit on delivery plus tax. Car can be purchased at end.

**PALMER FALS**

OPEN: MON. AND THURS. 8:30 A.M. 'TIL 9:00 P.M., TUE., WED. AND FRI. 8:30 A.M. 'TIL 6:00 P.M., SAT. 'TIL 1 P.M. SERVICE OPEN SATURDAYS TOO!

In Washtenaw County since April 15th, 1912

**CHELSEA 475-1301**

**WEATHER For the Record . . .**

	Max.	Min.	Precip.
Wednesday, Feb. 26	29	13	0.20
Thursday, Feb. 27	24	11	0.09
Friday, Feb. 28	28	18	0.02
Saturday, March 1	34	25	0.00
Sunday, March 2	37	21	0.13
Monday, March 3	35	24	0.00
Tuesday, March 4	34	23	0.03

**The Importance of Planning**

It is only natural to put things off, but proper planning can spare a family traumatic decisions and financial burdens in the event of one's death. Pre-arranging a funeral may seem a difficult task, but there can be peace of mind for an individual who knows his or her wishes will be followed. For more information and guidance in funeral pre-arrangement . . . why not visit us or write for your FREE Pre-arrangement Booklet.

Please send me my copy of "My Specific Requests"

Name \_\_\_\_\_

Address \_\_\_\_\_

**Staffan-Mitchell FUNERAL HOME**  
124 PARK ST. PH. 475-1444

MEMBER BY INVITATION **NSM** NATIONAL SELECTED MORTICIANS

## Uncle Lew from Lima Says:

DEAR MISTER EDITOR:

The news last week was somewhat short of comforting to Clem Webster. He told the fellers at the country store Saturday night that the more we stir the mess in the Filipines the worst it smells, but the most discouraging word come out of Washington as usual. Clem had come to the session with a clipping where the Internal Revenue had just sent out its first batch of refunds untouched by paper and pencil or even human hands.

According to the report, the returns were sent the way you would wire bail money three states away, and Clem said this is to close for comfort to what actual happens to taxes sent to Washington. Then the electronic numbers were checked by special trained computers and where refunds were due the computers made out the checks and mailed em. Clem said he had thought the situation up one side and down the other, and he was of a mind that computers have rose up and took over the IRS. He is worried because it's a known fact that the hands that hold the pursestrings run the world.

Democrat Clem said overthrow of IRS by computers would explain why the perposed Reagan budget wants all guns and no butter. Survival of the species is what it is, was Clem's words. Computers know that more computers are needed to handle the high tech weapons systems than farmers and ranchers can use working up inventories for bankrupt sales. And it must of been a teleprompter computer breakdown that caused the President to explain the Filopine election in such a way that all the President's men ain't been able to explain what he meant to say.

Furthermore, Clem went on, if the hands on the pursestrings.

ain't human so much the better for the IRS that don't even try to explain the inhuman ways it draws money out of folks. Last year, Clem recalled, IRS humans first blamed computers but final admitted they shredded thousands of income tax forms accidental. Maybe they had been programmed by the computers to cut down the workload, Clem said, but whatever the reason if the computers are running the humans now you can bet they are bent on gitting even.

Republican Ed Doolittle said Clem's comment on the President's farm budget showed he had blown any fuses left in his head. The plain truth is, Ed declared, the Administration is trying to bring agriculture down easy. The new budget cuts farm spending 18 percent, Ed said, but the \$44.6 billion in it funds most of the support programs. With the Federal Government in debt \$2 trillion and climbing and with Government warehouses filled with farm surplus, what don't make sense is why it's doing as much as it is.

General speaking, the fellers sided with Clem on the computer overthrow idee, farm budget or no. Zeke Grubb said computer revenge is the only way to explain why the Treasury has lost billions supposed to be circulating. Humans might say the missing money is overseas, Zeke said, only because they figger if it was in piggy banks in this country in the same houses with all them back issues of National Geographic the weight would turn the world over.

The truth is, Zeke declared, bank computers are using the money to make \$290 million a year in interest while they hold up clearing our checks for a month or more.

Yours truly, Uncle Lew.

**Now is the time to book your cruise. SPECIAL SAVINGS NOW AVAILABLE! 475-8630 Call us Now 475-8639 Always Lowest Available Air Fares**

AIRLINE TICKETING — CRUISES — AMTRAK  
Corporate Accounts Welcome

**ACCENT ON TRAVEL LTD**

Affiliated with Huron Valley Travel

**There is No Charge for Our Service! FREE TICKET DELIVERY**  
104 S. MAIN ST., CHELSEA, MICH. 48118  
(Above Secretary of State office)

**Here's Little Arthur Ray He is 50 on this day.**

**At this picture please do stare For Arthur Ray did have hair.**

**BRONZED & BEAUTIFUL BODIES...**

**Ricardo's**

**HAIR & TANNING SALON**  
MAIN ST. • CHELSEA • 475-1671

## Modern Mothers Learn About Art Of Rug Hooking

The Feb. 11 meeting of Modern Mothers Child Study Club was a progressive dinner with the group meeting at the home of Debbie Peck for punch and hors d'oeuvres. The main course was served at the home of Pat Whitesall and the group moved on to Carol Zenz's home for dessert.

The club welcomed Ann Mann into its membership and exchanged valentine surprises.

On Feb. 25 Joan Easudes demonstrated the art of rug hooking at a meeting held at the home of Janet Alford.

Joan explained the history of rug hooking and displayed the beautiful rugs she has made over the past five years. Joan explained the tedious task of cutting each piece of wool, dyeing the wool and bundling it in preparation for the project. She then "hooked" the strands of wool into the frame-held burlap backing, demonstrating how the pattern is completed. It became clear why these beautiful works of art are indeed priceless treasures to their owners.

Refreshments were prepared and served by Debbie Arend and the evening ended after a short business meeting.

Subscribe today to The Standard

## Senior Citizens Nutrition Program

Weeks of March 5-March 12

### MENU

Wednesday, March 5—Cream of mushroom soup, ham and cheese on pumpernickel, mayonnaise, carrot-pineapple salad, fruit juice, milk.

Thursday, March 6—Meatloaf and gravy, mashed potatoes, peas and carrots, whole wheat bread, tapoca with raisins, milk.

Friday, March 7—Tuna noodle casserole, buttered green beans, tossed salad, fresh orange, milk.

Monday, March 10—Chicken pie and gravy, mashed sweet potatoes, citrus salad, dessert, milk.

Tuesday, March 11—Fiesta steak, scalloped potatoes, buttered peas, French bread and butter, applesauce, milk.

Wednesday, March 12—Chop suey with vegetables, rice, orange and pineapple gelatin salad, granola bar, milk.

The first combination of black workers occurred when chimney sweepers in Charleston, S. C., refused to work unless their price scale was met. Rather than being a strike against employers, this was a protest against price controls in 1783, according to "Labor Firsts in America," a publication of the U. S. Department of Labor.

### ACTIVITIES

Wednesday, March 5—Sherry Resnick will register new volunteers today.

9:30 a.m.—Cards, break for lunch but play continues until 4 p.m.—pinchle; 4-and 6-handed euchre; also, dominoes and triominoes.

9:30 a.m.—Needlepoint, knitting and crocheting—Individuals enjoy coffee hour while working on their needlework.

10:00 a.m.—Ceramics.

1:00 p.m.—Fitness.

1:00 p.m.—Bowling.

Thursday, March 6—9:00-11:00 a.m.—Needlework group meets to make lap robes, slippers and ditty bags for VA Hospital.

9:30 a.m.—Cards.

9:30 a.m.—Needlepoint, knitting and crocheting.

1:00 p.m.—Needlework, quilting.

1:00 p.m.—Kitchen band.

2:00 p.m.—Walking.

Friday, March 7—9:30 a.m.—Cards.

9:30 a.m.—Needlepoint, knitting and crocheting.

1:00 p.m.—Advisory Board.

Monday, March 10—9:30 a.m.—Cards.

9:30 a.m.—Needlepoint, knitting and crocheting.

9:30 a.m.—China painting.

10:30 a.m.—Widows meeting.

1:00 p.m.—Stained glass.

1:00 p.m.—Bingo.

Tuesday, March 11—9:30 a.m.—Cards.

9:30 a.m.—Art class.

10:00 a.m.—Crafts.

10:30 a.m.—Progressive Euchre tournament with prizes.

Wednesday, March 12—Sherry Resnick, Retired Senior Volunteer Program, will register new volunteers today at the Nutrition Site.

9:30 a.m.—Cards.

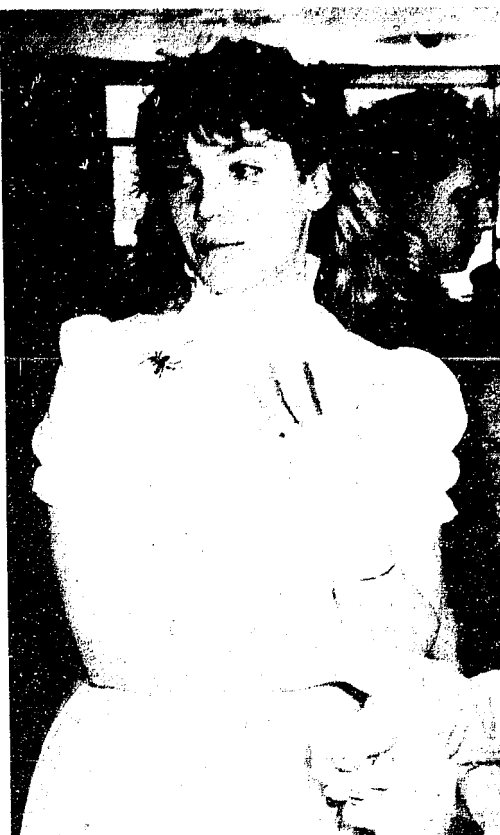
9:30 a.m.—Needlepoint, knitting and crocheting.

10:00 a.m.—Ceramics.

1:00 p.m.—Fitness.

1:00 p.m.—Bowling.

Cultivating bacteria instead of trees and cotton plants to produce cellulose may one day lead to cheaper paper, clothing and medical supplies. National Wildlife magazine reports that a researcher at the University of Texas at Austin has discovered a strain of bacteria which produces cellulose requiring much less processing than wood pulp to produce paper.



LITTLE MISS MUFFETT prepares to take a swat at that nasty spider on her shoulder during last week's Winter Carnival at Chelsea High school. Michelle Kuhl made a handsome Miss Muffett for Wednesday's Storybook Day, in which students dressed up like their favorite characters.

## Child Study Club Members Hear of Life in England

Chelsea Child Study Club members were treated to an interesting and informative discussion on life in England at the Feb. 25 meeting.

Jean Cooper and Ann Mason introduced members to the areas they lived in before moving to Chelsea. They spoke of the differences and similarities between the two countries and passed out a quiz to demonstrate the language differences and provide a few facts about England.

The meeting was held at the home of Kay Redding.

The next meeting will be held March 11 at St. Paul United Church of Christ and the members will be introduced to the art of stenciling by Janet Alford.

## Pasta Educational Class Offered By Extension Service

What food comes in shapes that mimic seashells, stars, bows, worms and Shirley Temple curls? There are so many varieties of this food that you can dine with a different one every day of the year.

The answer, of course, is pasta, ancient history to Italians, but newly re-discovered by Americans.

The Co-operative Extension Service will sponsor an educational program on Pasta, the Versatile Dish on March 11, from 7:30 to 9:30 p.m. at the County Service Center, 4133 Washtenaw. Extension programs are open to all regardless of race, color, creed, sex, handicap or national origin. This program is part of the monthly series, Corner on the Kitchen.

Peter DiLorenzi, restaurant consultant affiliated with Paesano's and Bolla Ciao Trattoria restaurants, will demonstrate several varieties of easily prepared sauces that produce the classic dishes in the Italian cuisine.

Marion Prince, extension home economist, will talk about the nutritional contribution of pasta, why it need not mean extra pounds, and how it fulfills with latest dietary recommendations for more complex carbohydrates.

Reservations are required; call 973-9510. A \$3 fee for food for tasting may be paid at the door.

### SOUNDINGS

A non-profit Center for Women

**YES!**

**YOU CAN!**

- Build self-confidence
- Overcome fears
- Find a job

If you are a separated, divorced, widowed woman

**CALL 665-2606**

JOIN OUR NEXT JOB PREPARATION PROGRAM

Beginning March 11

## Family Practice Center Offers Allergies Program

Most people joyfully wait the coming of summer. However, for some people warm weather means floating pollens to irritate the eyes and make the nose run. Then, there are others who experience these irritations the year round.

What causes this reaction? Come to a special session to be held at the University of Michigan Family Practice Center at Chelsea to learn the answer to this and more importantly, what can be done to relieve the symptoms.

Dr. James McLean, professor of internal medicine in the division of allergy, at the University of Michigan Hospital will present this information. The program will take place Wednesday, March 12, 7-8 p.m. and a question and answer period will follow the presentation.

The program will be held in the classroom at the Family Practice Center at Chelsea, 775 S. Main St. Pre-registration is requested by calling 763-7120. A \$2 fee is payable at the door.

## CAROL'S CUTS

40 CHESTNUT

Monday, Wednesday

and Friday

475-7094

by Appointment Only

9:00 a.m. - 3:00 p.m.

## North Lake Co-Op Pre-School Offers Special Programs

North Lake Co-Op Pre-School will sponsor a series of "Sunshine Saturday" programs beginning March 22.

The programs are scheduled from 9:30 to 10:30 a.m. for two-through four-year-olds and their parents, and are intended to give the child and parent opportunities to "see and touch" the pre-school experience.

Art projects, games, educational toys, stories and music will make up the one-hour demonstration classes. Parents will have a chance to ask questions.

The programs will be held once a month through May. No fee is charged, but reservations are required. Call 475-3815.

Under the Occupational Safety and Health Act, employers have the general duty of providing their workers with employment and a place of employment free from recognized hazards to safety and health, and they must comply with OSHA standards, according to a Labor Department fact sheet.

## Gregory Area Youth Completes Army Teletype Course

Army Private Ronald F. Lindquist, son of Floyd M. Lindquist of 19432 M-36, Gregory, and Marion D. Fettes of 411 Denver St., Lansing, has completed the Radio Teletypewriter Operator course at the U.S. Army Signal Center, Fort Gordon, Ga. The 14-week course provides soldiers with a working knowledge to install, operate and perform operator's maintenance on field radio teletypewriter sets.

He is a 1982 graduate of Stockbridge High school.

## Depot Restoration Funds Accumulate

(Continued from page one)

responsible for keeping records of the money allocated to the service for various programs carried out in Washtenaw county. She wrote accounting reports to the state and county.

Since retiring from the co-operative extension service, Mrs. Chapman has worked for various groups including Faith in Action and Chelsea Area Transportation Service. She has also been active in St. Mary's Catholic church.

Happy St. Patrick's Day

Happy St. Patrick's Day

## YOUR BASIC ART & DRAFTING NEEDS

MADE - TO - ORDER

## RUBBER STAMPS

## Poster Board & Stencils

We Have Complete Stock of Cross, Bic, Pilot, Paper-Mate, Sanford, Pens and Markers.

## COPYING SERVICE

Chelsea Office Supply

118 S. Main Ph. 475-3539 or 475-3542

Mon.-Fri. 9:30-5:30 Sat. 9:30-4:00

Yes, we have the newest figurines by Frances Hook



It's one of six new issues. It's hand painted in the soft pastels that are Frances Hook's hallmark. And it's now in stock. Come in to see all Mrs. Hook's limited edition porcelains. They're serially numbered to 15,000 and produced exclusively by Roman, Inc.

Handful of Happiness, 6", \$36

## WINANS JEWELRY

## American Business Women Association Chelsea Chapter presents its

FIFTH ANNUAL Fashion Show & Salad Luncheon

Saturday, March 22nd

1:00 p.m.

Chelsea High School

Fashions by The Talbotts of Ann Arbor  
Hairstyles and Make-up by Gemini  
Door Prizes

Ticket Price \$6.00  
All Proceeds Go Toward Scholarships

## FOR RESERVATIONS

Mail this coupon by March 17 to:

ABWA  
c/o 114 South Street  
Chelsea, Michigan 48118

Number of tickets

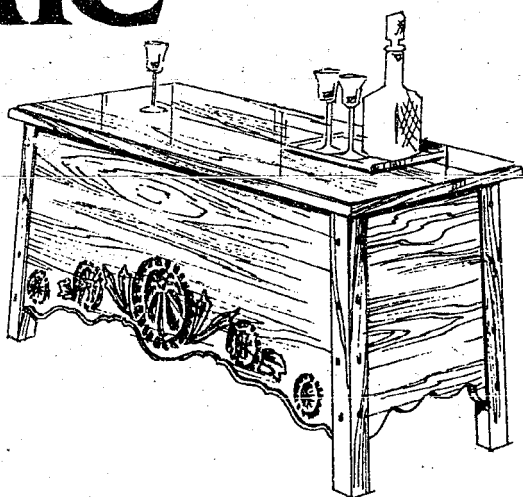
\$ Amount Enclosed

Name:

Address:

Please make check payable to ABWA

## winter sale



WHATEVER YOUR DECORATING DREAM, YOU CAN MAKE IT COME TRUE AND SAVE... BUT HURRY

## SALE ENDS SATURDAY

The days are dwindling down to a precious few. If you want something beautiful for your home... and you want savings too, now is the time to act. Our interior experts will be happy to help you make your choices from the hundreds of catalogs, thousands of fabric swatches, coordinate wall coverings, carpeting and window treatments.

*Merkel*

HOME FURNISHINGS - CHELSEA

Open Monday and Thursday night until 8:30 p.m.  
Phone 475-8621 or 1-800-482-3650



## Pioneer Craft Fair Slated March 15

March 15, will find the 13th annual Pioneer Craft Fair taking place at Dexter High school. Hours will be from 10 a.m. to 4 p.m. Admission will be: adults, \$1.50; grades 1-12, 50¢.

There will be many regular demonstrators among the 50 plus on hand to share their crafts with the public. A newcomer to the fair this year will be George Jull, demonstrating some of his very unusual basketry. John Covington, another newcomer, will share his talents in demonstrating the making of wooden weather-vanes. Mr. Covington is a well known artisan in Texas. This will be his first appearance in Michigan, where he will attend several craft shows over the next few weeks.

On hand to share their crafts will be demonstrators of wood-working such as carvings, toys, whittling, etc. Country folk art will include dummy boards, animals, accessories and wood inlay. Jewelry making is always popular, as is the rug weaving and braiding.

This year persons attending the fair will be privileged to view the work of some very special people, the Hmong. If you are interested in needlework, such as quilting, this will be of special interest. This tribal needlecraft, *pa nadu* (pronounced pond ow) survived the ravages of war in Laos during the 1960s, Communist cruelty in the 1970s and a desperate 12,000 mile journey to the United States in the 1980s.

Today this unique folk art, created by Southeast Asian mountain people called the Hmong, is kept alive by dedicated church groups. The church groups are preserving the craft, a combination of reverse

applique, applique and embroidery and using it to help the Hmong refugees become financially independent. Working without measuring tools of any sort, these talented people create breathtaking works combining complex geometric designs in reverse applique with stitches so fine they are practically invisible. As the children of the Hmong become Americanized, this art may become lost; therefore, any of their work will only increase in value.

Have you wondered what happens to the monies generated by this craft fair? It is used to defray the expenses of the Dexter Area Museum. One of only two money makers sponsored by the Dexter Historical Society during each year, it is a vital part of keeping the museum operating. This fair benefits not only the museum but the village as well since people stop and eat or shop in the various stores after visiting the fair.

Luncheon will be provided by the Dexter Heritage Guild. There will be a bake table, loaded with the items that we all look forward to purchasing. Cookies will also be for sale to nibble on while touring the fair.

Three door prizes will go home with some lucky persons at the close of the day. Mary Rush has donated one of her very popular corn husk dolls. John Covington has given a "Miss Liberty" wooden weather vane. The Iretons have donated one of their charming wooden trains. Tickets will be on sale during the fair.

Federal, state, county, and local governments operate over 2.7 million motor vehicles to provide services.



THE CHELSEA BULLDOG has appeared in many forms over the years, but rarely as a block of ice. These sophomores worked quickly in the bitter cold to produce everybody's favorite mascot for the ice sculpture contest, part of last week's

Winter Carnival at the high school. The team consisted of, from left, Kelly Kuzon, Tracy Modrzewski, Peggy Hammerschmidt, Andrea Worthing, Ada Tai, Kelly Stump, and Arlene Tai.

## Letters to the Editor

To the Editor:

I find the following quote from Michigan writer Jim Harrison's poem, "Returning To Earth," a most appropriate response to Will Connelly's latest diatribe (2/26/86):

"O Faustus talks to himself, talks to himself, talks to himself, talks to himself, talks to himself, Faustus talks to himself, talks to himself."

Kay Wozniak.

To Mr. Hamilton,

Being thoroughly impressed by the writing skills you displayed so well in the Sports Notes in The Chelsea Standard last week, I would like to take this opportunity to inform you of a few things which you may not have been previously aware of.

In the first place, athletes' first responsibilities are to their studies; if they were not most sports fans would have nothing to watch because there would be few athletes, period, and fewer would be capable of being accepted to college, let alone eligible to participate in college athletics.

In addition to which, maybe if you had spent more time "studying Dickens and the Civil War" and trying to be an honors student in school you would have been able to find a better job. Since working for The Standard doesn't appear to be such a good one. That is if the writing you've displayed in the Sports Notes is the best The Standard is able to produce.

Furthermore, I would like to take this opportunity in "speaking" for the rest of The Standard readers, as well as for myself, to express my deepest sympathies for you in your present state of depression and to say I am truly sorry that our athletic abilities depress you so, for no one deserves such "Gloom, despair,—Deep dark depression," and, "excessive misery."

Finally, I cordially invite you personally to come up to the high school and "bang heads" at any time. Even though since I was not a member of a championship wrestling team, I may not be of your caliber.

Very sincerely,  
Steve Wingrove.

"One of the boys with—"not enough footwork!" (Taken in reference to the Feb. 26, 1986 issue of The Chelsea Standard.)

## Sheriff Schebil Heads Criminal Justice Assoc.

On Jan. 22, Sheriff Ronald Schebil was elected chairperson of the County's Criminal Justice Association. The Association boasts 21 members from all the local, state, and federal law enforcement and corrections agencies in Washtenaw county.

Schebil points out that the group's significance rests with the fact that the agency heads themselves are the ones who participate in the Association's activities. This makes it a "true" consolidation of Community Law Enforcement/Corrections policy makers, capable of taking appropriate action, when and where it is required, to benefit our many county communities. "With so many agencies of differing levels and concerns, it is an amazingly willing and viable group," remarked Schebil. "I intend to develop a prioritized agenda based on the Association's consensus, and focus on these joint issues one at a time. I'm sure we won't be lacking for activity."

Schebil used the opportunity of discussing the Association to point to other efforts of "integrated policy making," such as the Washtenaw County Policy Team (head of all the county departments) and the county's Human Service Committee, which have been quite successful at addressing issues of mutual concern. These are all groundbreaking efforts, and those of us who are involved to any degree have learned a great deal about effective resource allocations. In these kinds of efforts, Washtenaw county is easily the front runner in the state."

Give A

Gift Subscription to  
The Chelsea Standard!

BUY - SELL - TRADE  
NEW and USED

• GUITARS  
• WIND INSTRUMENTS  
**J & L MUSIC**

121 W. Main St.  
Stockbridge, MI  
Ph. (517) 851-7585

Hours:  
M-F 10 a.m.-6 p.m.  
Sat. 10:30-6:30

Presents



The Chelsea Area Players will present "Camelot" at the Chelsea High School auditorium this summer.

The CAP is currently accepting applications for the following paid positions:

- Artistic Director
- Musical Director
- Choral Director
- Technical Director
- Choreographer
- Rehearsal Pianist
- Costumer

Please send resumes by March 31, 1986 to:

Pat Paulsell, Producer  
11141 Boyce Road  
Chelsea, MI 48118

For additional information or questions, call:  
(313) 475-9818

## THE UNIVERSITY OF MICHIGAN FAMILY PRACTICE CENTER AT CHELSEA

PRESENTS

## ALLERGIES' CAUSES AND TREATMENT



WEDNESDAY,  
MARCH 12

7 p.m.

**DR. JAMES McLEAN  
ALLERGY SPECIALIST**

This session will be held in the classroom at the Family Practice Center, 775 S. Main St., Chelsea. Pre-registration is requested by calling 763-7120.

A \$2 fee is payable at the door.



Flushed with joy!

## SURE, we're for the SEWER!

A decent and legal wastewater system is a regional public health issue but the sewer bond decision next Monday is solely in the hands of registered voters living in the village. And so we say, to those who are privy-ledged to cast a ballot March 10, vote YES for the future of Chelsea-land.

## EARLY SEWER BOND ENDORSERS INCLUDE:

Jerry Ashby  
Jerry Benjiman  
Nancy Benjiman  
Bill Bott  
Richard Borton  
Rosaleen Borton  
Sandra Brown  
Walter Brown  
Pat Clemons  
Tom Clemons  
Marion Connelly  
Will Connelly  
Susan Davis  
Tom Davis  
Douglas Denison  
Marsha Denison  
Art Dils  
Ruth Dils  
Jack Dunn  
Nancy Dunn  
Arnold Fahrner  
Norman Fahrner  
Ann Feeney  
Michael Feeney  
Carol Ghent  
Jim Ghent  
George Heydlauff  
Bob Hodder  
Daphne Hodder  
Joyce Johnson  
Sam Johnson  
Boots Kaercher  
Dave Kaercher  
Chuck Lancaster  
Helen Lancaster  
Judy McArthur  
Warren McArthur  
Ann Merkel  
Jack Merkel  
Mary Ann Merkel  
Tim Merkel  
Carolyn Monier  
Rick Monier  
Bill Nuffer  
Donna Palmer  
George Palmer  
Herman Radloff  
Margaret Radloff  
James Rapai  
Laura Rapai  
Sally Ticknor  
Rendell  
Eileen Salyer  
Marvin Salyer  
Audrey Satterthwaite  
Jerry Satterthwaite  
Dale Schumann  
Janette Tobin  
Marty Tobin  
Dennis Turner  
Sandy Turner  
Fritz Weber  
Friedelle Winans  
George Winans  
Jack Winans  
Jeanette Winans

VOTE ☒ YES

FOR SEWAGE

BONDS

## DIANE S. WIEDMAYER

CERTIFIED PUBLIC ACCOUNTANT

COMERICA BANK BUILDING  
135 E. MAIN, SUITE 202  
MANCHESTER, MICHIGAN 48158  
(313) 428-8411 / (313) 428-7398

## LUNCHEON SPECIAL FOR MONTHS OF FEBRUARY & MARCH CROCK OF SOUP OR CHILI & SALAD BAR - \$2.50

DAILY LUNCHEON SPECIAL  
Food to take out for lunches

## DINNER SPECIAL

Daily, from 5:30 till?

MONDAY THRU THURSDAY ..... at a Special Price  
FRIDAY ..... Bar-B-Q Country Style Ribs  
SATURDAY ..... Prime Rib (above average cut)

SUNDAY, MARCH 9 - 2 p.m. till?

## STEAK SPECIAL

TOP SPORTS EVENTS on BIG SCREEN TV  
LIVE BAND FRIDAY & SATURDAY

CATERING — Wedding — Graduation — Business Meetings

**WOLVERINE**  
Food & Spirits



W. Old US-12 & M-52  
Chelsea

(313) 475-9014

## Sgt. Susan Mathena On Duty With Army At Fort McNair

Army Sgt. Susan A. Mathena, daughter of Donna M. Branham of 12005 Jerusalem Rd., Chelsea, and Ronald J. Branham of 2048 Charlton, Ann Arbor, has arrived for duty with Headquarters, Installation Support Activity, Fort Lesley J. McNair, Washington.

Mathena, a personnel specialist, is a 1981 graduate of Chelsea High school.

Telephone your club news to 475-1371

## JOHNSON, PARISHO & CO., P. C.

Certified Public Accountants

Two locations to serve you  
CHELSEA OFFICE  
107 1/2 S. Main Street  
P.O. Box 251  
Ph. 475-9640  
ANN ARBOR OFFICE  
400 E. Eisenhower Pkwy., Suite J  
Ph. 663-4558

WE SERVICE:

- Personal - Corporate - Partnership - Farms
- \* ACCOUNTING
- \* TAX PREPARATION & CONSULTING
- \* FINANCIAL PLANNING

Appointments available Monday through Saturday.

# Do you have PMS?

Recent research indicates that pre-menstrual syndrome may be the most common medical condition in the world. Forty percent of all women suffer from it occasionally, and ten percent of them have such a serious combination of symptoms that they require medical treatment.

## What is PMS?

PMS is a hormone disorder that originates in the brain, not in the reproductive organs, so it can affect women of all ages. Symptoms include headaches, fatigue, depression, anxiety, eating binges, and mood swings, but the symptoms can be as diverse as women themselves. The common denominator and the key to diagnosis is the cyclical occurrence of the symptoms.

## What is The Michigan PMS Program?

The Michigan PMS Program is part of the new Women's Health Center at Chelsea Community

Hospital. At The Michigan PMS Program, you will never be told that there is nothing wrong with you or that your symptoms are your fault. Your symptoms will be carefully evaluated, and an individualized treatment program will be designed to relieve your specific condition.

Contact The Michigan PMS Program for more information at (313) 475-1311, ext. 196. The Women's Health Center would like to know about your interests and needs for future services. Call us with your ideas and suggestions.

Conveniently located at I-94 & M52, 15 miles west of Ann Arbor.



**Women's Health Center**  
Chelsea Community Hospital  
775 South Main Street  
Chelsea, MI 48118-1399  
(313) 475-1311 ext. 196

## A VIEW from the CLOCK TOWER

By Will Connelly

### SAVE \$5 MILLION OR TOSS IT DOWN THE SEWER?

Our family home on McKinley Rd. is just a short distance north of the village limits. Recently surveyors have been hard at work in the cornfield across the road, evidently plotting (or plotting) a subdivision. So I do not believe all this stuff about Chelsea remaining within its present boundaries for 20 years. I may become a resident of the village within five years and that is why I wish I could vote in the important sewer bond issue on the ballot next Monday.

Part of my viewpoint on the Chelsea sewer issue is rooted in 14 years of service as public relations counsel, writer and editor for the National Sanitation Foundation. They happen to have a testing laboratory here in Chelsea, but more important, NSF is one of the nation's most prestigious agencies in the field of wastewater treatment.

Even though I am not a registered Chelsea Village voter, I am going to write today from this viewpoint because that is how I feel.

Our village is facing a legal, economic and public health crisis. We've got to rebuild our sewerage system at a cost of \$2 million now or pay as much as \$7 million later. We are dumping millions of gallons of raw, untreated sewage into the Huron River system, an unsanitary practice which has been declared against the law by the federal government (enforced by the EPA) and the State of Michigan (enforced by the DNR).

Our municipal sewage treatment system is so old, so undersized, so out of date, that we dump 200,000 gallons of raw sewage on each of about 45 days a year into Letts Creek. Raw sewage means the untreated contents of our toilets, garbage disposers, laundry machines and industries. We send this stuff straight downstream to Dexter, Ann Arbor, Ypsilanti and Lake Erie. These are the 45 days when we have a fairly heavy rain but there are other periods when our aging sewers and treatment plants have been severely overloaded. We have been forced to discharge millions of gallons of partially treated sewage into the water system of our region.

Chelsea, like thousands of other communities populated by decent, responsible citizens, has been unaware of the extent of its guilt in water pollution. Much time and money has been wasted because we have not been properly informed about our responsibilities under the Federal Clean Water Act which was passed in 1972. The government has been patient and generous in helping communities such as ours to comply with the law. For the planning alone, Chelsea has been given a grant of \$155,000. This has paid the funding of plans for an expanded, modernized sewer system that will cost about \$4.5 million. That estimate is the result of a study made by a qualified national engineering firm and a parallel study made by the EPA.

The estimate may not be entirely accurate. There may be cost overruns as unexpected problems are encountered. There may be savings as economies appear. Give or take differences of five to ten percent, the essence of the problem today is time. We can lose millions by delaying or obstructing the project.

If we act now—if we vote YES to the bond issue next Monday—the government will pick up 55 percent (\$2.5 million) of the 4.5 million dollar bill while we pay 45 percent, or \$2 million.

By voting YES to the bond issue, we will borrow our two million probably with 15-year bonds. Based on a current interest rate on municipal bonds of 9 percent, your YES vote will cost you about 56 cents a day during the life of the bonds. The payments of principal and interest may either be in the form of millage tax increases or sewerage charges.

What if you decide, "Nuts to all this," and you mark the ballot NO?

If enough other people say NO, so that the issue is defeated, we will not only be in non-compliance with the Federal Clean Water Act, we will be in defiance of it. We will then be liable to multimillion dollar water pollution lawsuits by Dexter, Ann Arbor, Ypsilanti or any downstream community. We can become in contempt of court, or convicted under the Clean Water Act, where a federal judge is entitled to fine Chelsea \$2,500 a day until the new waste treatment plant is in operation. This \$2,500 per day is the minimum daily fine under the Clean Water Act. If we then decide to comply with the law, and it takes two years to get the plant into operation, the NO votes on our March 10 bonding issue will have cost us five million dollars. HOW? The \$2,500 a day fines will add up to \$1.8 million. There will be a demand for repayment of the \$155,000 for the plans we rejected. There will be the withdrawal of the \$2.5 million in federal sharing funds. Construction costs will have gone up by eight to ten percent. Bond interests may have risen to 12 or 14 percent.

The voter who voted NO to save something like 56 cents a day is more likely to wind up paying \$1.39 a day for the 15 years for a personal or family total of \$7,600.

As for the registered voter who decides on March 10 that it's too much bother to go to the polls, it's about as bright as stuffing his or her purse full of money and then tossing it out of the car window on the way down the street.

I sure wish I was entitled to go to the polls Monday and vote YES for the sewer bond issue. I hope it passes by a generous margin, but would still feel good if the final tally turned out to be 250 to 249.

**LORDY, LORDY  
LOOK WHO'S 40!**

We love ya  
Marlyn  
Kim,  
April, Mike,  
Anita,  
Michael (Moh Bandoekol)  
Jayma

J.D.  
M.R.




RAGGEDY ANN AND ANDY were on hand last week at Chelsea High school for Storybook Day, part of the 1986 Winter Carnival sponsored by the student council. Students dressed up as characters from nursery rhymes, fairy tales, and

history. Each day of the week-long carnival had a different dress theme. Raggedy Ann was played by Chara Street, right, and Melanie Flanagan took the part of Andy.

## Seniors, Freshmen Were Winter Carnival Winners

Chelsea High school's annual Winter Carnival ended last week with the seniors and freshmen tying for first, the sophomores coming in second, and the juniors trailing in third.

The week's events included a snowball toss, a volleyball game, and an ice sculpturing contest. The students showed their pep by dressing according to the day's themes. Monday was Sweats Day, Tuesday was Bum Day, Wednesday 50's and 60's Day, Thursday Storybook Day, and Friday was Blue and Gold.

The week ended with a pep rally, featuring air bands, the basketball game against Pinckney, and a Blue and Gold dance. The 1986 Winter Carnival King was crowned at the game. This year's winner was junior Curtis Heard. His escort, Michelle Kuhl, is also a junior.

Winter Carnival chairpersons

were junior Elizabeth Maurer and senior Gary Johnson.

The first state legislation prohibiting discrimination in employment on the basis of race, creed or color was the Ives-Quinn Act in New York in 1945, according to "Labor Firsts in America," a publication of the U. S. Department of Labor.

**ZOA'S  
LOG CABIN LUNCH**

6714 Clear Lake Rd., Waterloo

**OPENING  
Fri., March 14th**

Featuring  
All-You-Can-Eat Ocean Perch  
Every Friday

## Do You Know This Man?

And you STILL let him fill  
your prescriptions?



**Happy 50th  
Dad!**

The Chelsea Standard, Wednesday, March 5, 1986

The first federal bureau to attempt to ease labor-related racial tensions caused by blacks leaving the South was the Division of Negro Economics, in the Department of Labor in 1918, according to "Labor Firsts in America," a publication of the U. S. Department of Labor.

**STEVE KRULL  
CONSTRUCTION  
COMPANY**

• Repairs  
• Additions  
• Remodeling • New Building • Drywall  
• Painting • Wallpapering • Free estimates

**475-3179**

**CHANNEL  
MASTER  
SATELLITE**

Sales & Installation

Check our low prices!  
PRICED FROM \$900  
FINANCING AVAILABLE

**LOY'S  
TV CENTER**

Ph. 769-0198

Please Notify Us of  
Any Change in Address

(Political Adv.)

**ELECT  
CHARLES RITTER  
VILLAGE PRESIDENT  
MARCH 10, 1986**

SUPPORT DENNIS PETSCH - GARY BENTLEY  
ROSEMARY HAROOK

(Paid for by committee to elect Charles Ritter, Charles Ritter Chairman.)

## This Week's Thought



By  
DONALD A. COLE

Nearly every one at one time or another has been caught in a horrible storm while driving a car. . . . There were times when your windshield wiper could hardly clear your window to give you a clear view of the road. . . . At such times the yellow and white lines on the road were certainly helpful. . . . Without them you probably would not have been able to continue driving. . . . The yellow and white lines kept you out of trouble and protected your safety.

There is a parallel here that can be drawn for use in our day by day living. . . . Safety lines have been given to us and no one can dispute it. . . . The lines are safety guides and common sense should tell us how important they are. . . . Yet, some people continually ignore them, sadly and foolishly.

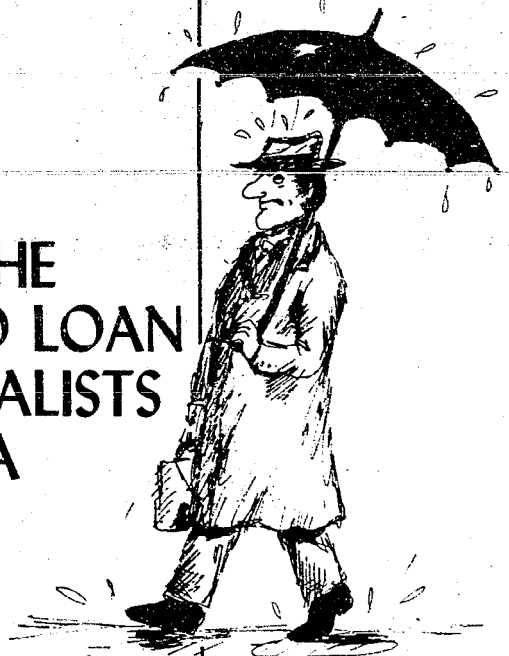
The basic guides are in the Bible such as the Beatitudes, the Lord's Prayer and of course the all important Ten Commandments. Is it not true that if we follow these white lines carefully, we would avoid many ditches of difficulty in our daily living?

**COLE-BURGHARDT FUNERAL CHAPEL**

DONALD A. COLE, Owner-Director

214 E. Middle St., Chelsea Ph. 475-1351

## SEE THE AUTO LOAN SPECIALISTS FOR A RIDE!



Financing for new and used cars,  
and light trucks is available.  
Take a hike on down, an Auto  
Loan is waiting for you!

**CSB** CHELSEA  
STATE  
BANK

Member F.D.I.C.

Branch Office  
1010 S. Main

Phone  
475-1355

Main Office  
305 S. Main

# COMMUNITY CALENDAR

## Monday—

Chelsea Recreation Council 7 p.m., second Monday of the month, Village Council chambers. 35cf

Chelsea Substance Abuse Task Force—second and fourth Mondays, 7 p.m., Kresge House. 1f

Chelsea Kiwanis Club meets every Monday, 6:30 p.m. at Chelsea Community Hospital.

Parent-Teacher South meets the second Monday of each month in the South School Library at 7:15 p.m.

Chelsea School Board meets the first and third Mondays of each month, 8 p.m., in the Board Room.

Chelsea Lioness, second Monday of each month at the Meeting Room in the Citizens Trust on M-52, Chelsea, at 7:30 p.m. Call 475-1791 for information.

Parents Anonymous Group, Chelsea, a self-help group for abusive or potentially abusive parents, Mondays, 7-9 p.m. Call 475-9176 for information.

Lima Township Board meets the first Monday of each month at 8 p.m., Lima Township Hall. advx18ti

Toughlove Parent Support Group—For parents troubled by their teen-agers' behavior in school, in the family, with drugs and alcohol, or with the law. 7:30 p.m. Mondays St. Joseph Hospital, 5301 E. Huron River Dr. Education Center, Classroom 8. Information: Sue Thomas, 971-0047, or Gale Cobb, 996-8781.

Chelsea Area Historical Society, Monday, March 10 at 7:30 p.m. at the Crippen Building, 725 W. Middle St. on the grounds of the apartments of the Chelsea Methodist Retirement Home. Richard Ashley of Dexter, member of the Huron Valley Railroad Society and Ann Arbor Model Railroad Club will speak on the History of the Railroads and show models.

## Tuesday—

Chelsea Village Council, first and third Tuesdays of each month. advf

Chelsea Area Jaycees, second Tuesday of each month at Chelsea Community Hospital. Open to men and women from ages 18 through 35. For more information call Tim Merkel, 475-3272.

Sylvan Township Board regular meetings, first Tuesday of each month, 7 p.m., Sylvan Township Hall, 112 W. Middle St. advf

American Business Women's Association 6:30 p.m. at the Chelsea Hospital fourth Tuesday of each month. Call 475-1707 for information.

Lima Township Planning Commission, third Tuesday of each month, 8 p.m., Lima Township Hall. advx30ti

Lions Club, first and third Tuesday of every month, 6:45 p.m., at Chelsea Community Hospital. Ph. 475-7324 or write P.O. Box 121, Chelsea.

Chelsea Rod and Gun Club regular meeting, second Tuesday of each month at the clubhouse, Lingane Rd. 49tf

Chelsea Rebekah Lodge No. 130 meets the first and third Tuesday of each month, at 7:30 p.m.

Chelsea Communications Club, fourth Tuesday of each month, 8 p.m., Chelsea Lanes basement meeting room.

Woman's Club of Chelsea, Tuesday, March 11, 8 p.m., at McKune Memorial Library. Program: "Art of Lithophaning."

## Wednesday—

VFW Post 4076 meeting second Wednesday of month, 7:30 p.m. VFW Hall, 105 N. Main.

OES, first Wednesday following the first Tuesday of the month at the Masonic Temple, 113 W. Middle at 7:30 p.m.

Wednesday, March 12, Support group meeting for family members of people with Alzheimer's Disease, at St. Clare's church, 2309 Packard Rd., Ann Arbor, 7:30 to 9 p.m. Call 662-6638 for more information.

Support Group for Relatives of Alzheimer's patients, Wednesday, March 19, 10 to 12 noon, at Turner Geriatric Center, 1010 Wall St., Ann Arbor. For information, call 764-2586.

Lima Extension, Wednesday, March 12, at 10:45 a.m., at Merkel's store, basement department. Program: "Home Decorating."

OES Past Matrons dinner and meeting at Senior Citizen site at North school, 11:45 a.m., Wednesday, March 12. Reservations must be made by March 10. Ph. 475-1779 or 475-1141. If schools are closed meeting will be cancelled.

## Thursday—

Chelsea Rod and Gun Club Auxiliary regular meeting, second Thursday of each month, 7:30 p.m., at Citizens Trust meeting room, 7:30 p.m., clubhouse, Lingane Rd.

Chelsea Area Players Board meeting second Thursday of each month, 7:30 p.m., at Citizens Trust meeting room. For more information call 475-2629.

American Legion Post No. 31. General meeting the first Thursday of each month at the post home, Cavanaugh Lake.

New Beginning, Grief Group first and third Thursday each month, 7:30-9 p.m., Family Practice Center, 775 S. Main St., Chelsea.

Knights of Columbus Women's Auxiliary, second Thursday of each month, 8 p.m., at K. of C. Hall, 20750 Old US 22.

Chelsea Community Farm Bureau, Thursday, March 13, at the home of Mr. and Mrs. Leon Sanderson on Notten Rd., 7:30 p.m. Pot-Luck.

Washtenaw Area of Retired School Personnel (WARSP), Thursday, March 6, at the Holiday Inn, West Bank, 2900 Jackson Rd., Ann Arbor. Business meeting at 10:30 a.m., followed by a luncheon at 12 noon. Elaine Ray Connell will speak on "Health Risk Appraisal."

## Friday—

Senior Citizens meet third Friday of every month, pot-luck dinner, games and cards. 6 p.m. at Senior Citizen Activities Center at North school.

Toastmasters International, each Friday in the Woodlands Room at Chelsea Community Hospital at 12 p.m. for information call Judy Peak, 475-1311, ext. 311.

LaLeche League meeting Tuesday, March 11, 7:30 p.m., Emanuel UCC, 324 W. Main, Manchester. Topic: "The Art of Breastfeeding and Overcoming Difficulties." Group leader, Marsha Chartrand, 429-8531.

## Sunday—

Washtenaw County Historical Society, slide show on "Rural Architecture in Washtenaw County," 2:30 p.m., Sunday, March 9, at Ann Arbor American Legion Home, 1035 S. Main, Ann Arbor.

## Misc. Notices—

North Lake Pre-School, located in Chelsea, is taking enrollment for the 1986-1987 school year for 3- and 4-year-old sessions for 2-5 days per week. We offer co-op, non-assist, and non-participating options. For further information call Jan Roberts, 475-3615, adv. 43-5

Drop-In Service, the Children's Center at Chelsea Community Hospital, 475-1311, ext. 405 or 406. adv6tf

Parent to Parent Program: in-home, friendly, visiting support system for families with children. Call 475-3306, ask for Jo Ann.

Parents Without Partners, support group for single parents. Youth activities, social events, discussion groups. For membership information, call Polly N. at 971-5825.

Home Meals Service, Chelsea. Meals served daily to elderly or disabled. Cost per meal, \$2.25 for those able to pay. Interested parties call Ann Feeney, 475-1493, or Joyce Manley, 475-2795.

Chelsea Social Service, 475-1581, 2nd floor of Village Offices. Thursdays, 10 to 4, or if an emergency need at other times, call Linda at 475-7408 or Jackie at 475-1925.

Sexual assault counseling for victim, family, friend. Assault Crisis Center, 40009 Washtenaw, Ann Arbor, 994-1616, no charge.

FIA Community Center, open Mon.-Fri. for free services: food, clothing and financial assistance.

## Star Warren on Dean's Honor List at Jackson Comm. College

Star Warren, daughter of Mr. and Mrs. Andy Brown of Grass Lake has been placed on the Dean's List for academic excellence at Jackson Community College. Star is a 1988 graduate of Chelsea High school and a 1982 graduate of the Practical Nursing Program at Jackson Community College. She is currently enrolled in the Associate Degree Nursing Program and will graduate April 30.

Star is presently working in the Cardiac care unit, Foote Memorial Hospital, Jackson, and is the winner of the Presidential Scholarship given by Foote Memorial.

The first organization of white workers to advocate the creation of black labor unions and to allow blacks to attend its annual meetings was the National Labor Union in 1889, according to "Labor Firsts in America."

## JUST REMINISCING

Items taken from the files of The Chelsea Standard

### 14 Years Ago . . .

(Continued from page two)  
tions on the occasion of your birthday," the card read. "Mrs. Nixon joins me in extending best wishes that health and happiness may always be yours." At the top of the card was the presidential seal. Spaulding still doesn't know how the president found out about his birthday. "But it'll come out soon," he says.

### 24 Years Ago . . .

Thursday, March 1, 1962—  
At the Kiwanis Club "pay-off" dinner the losers for the annual Travel Series ticket sales entertained the winners. The winners, Jim Daniels' team of William Freeman, James Liebeck, William Rademacher, William Collins, A. S. Penhallegon, George Palmer, Harold Jones, Charles Cameron and George Doe, ate T-bone steak and the losers ate spaghetti.

Entertaining musicians were P. G. "Slider" Schaible, Jr.; Lou "Licorice Stick" Allen; Wally "Hot Lips" Wood; Mac "Molas" McClure; Bill "Big Bang" Rich; and Loring "Bongo" Bates. "Miss" Edwin (a?) Greenleaf, demonstrated the Twist, the newest dance craze which Judge Chandler Rogers seemed to "catch on fast" to; Don Turner demonstrated the "Mexican Hat Dance" and Ralph Guenther played his saxophone while his losing team performed.

Three outstanding 4-H members were honored at the annual Washtenaw county livestock banquet attended by 300 persons, Richard Haist for his outstanding projects in beef; Mary Sue Gordon, sheep; and Gene Girbach from Saline for swine.

Chelsea village clerk George Winans and police chief John Palmer joined yesterday in what they described as "another warning" against unscrupulous encyclopedia salesmen. To avoid spending several hundred dollars for future editions, residents were urged to ask to see the salesman's permit issued by the village, with the signature of George Winans.

The Chelsea Post Office has received a stamp issue commemorating the first orbital flight of a United States astronaut. Astronaut John Glenn's flight is recorded on a blue and yellow four-cent stamp issued simultaneously with the completion of the flight.

### 34 Years Ago . . .

Thursday, March 6, 1952—  
The 1952 Red Cross drive for funds got underway here Monday. Mrs. John Fischer, who is heading the campaign as chairman for the third consecutive year, said she was hopeful people in the community would make it easy for the volunteer block workers by having their contributions ready when the block workers call.

Chelsea upset Saline to the tune of 49-46 before a capacity crowd last Friday night. This put the Bulldogs in the second place in the Huron League standings because Dundee edged out Lincoln Consolidated by a tight 22-21 score to tie Saline for first place. Bob White led the Bulldog attack with 20 points, while Dick Merkel

dumped in 11 and Joe Greenwood sank 9.  
Extensive damage resulted when fire of undetermined origin broke out in the Jack Joseph residence on Madison St. while the family was away. The fire was discovered by Mac Packard, a neighbor, who turned in the alarm at 8:30 p.m. The entire inside of the living room, together with the furniture, curtains and other furnishings, was burned out.

Three men were elected to serve as members of the board of education during the consolidation of the Pleasant Lake Primary School District No. 1, March 3, at Freedom Town Hall: Roy Bihlmeyer, of the former Kuebler school district, moderator; Nathan Alber, of Silver Lake district, treasurer; and Alton Horning, of Pleasant Lake, trustee.

Features throughout the week at the Sylvan Theatre are "Indian Uprising" with George Montgomery; "Joan of Arc" starring Ingrid Bergman and Jose Ferrer, and "Lone Star" starring Clark Gable, Ava Gardner, Broderick Crawford and Lionel Barrymore.

## GIRL SCOUTS

### BROWNIE TROOP 676—

Our Brownie Troop has been busy. We went to the U. of M. Museum of Natural History. We have been studying and helping our feathered friends. We made bird feeders and stencilled plaques. We also went camping with our sister troop No. 719. We have been selling Girl Scout cookies, too.

Erin Armstrong, scribe.

The University of Michigan School of Dentistry is now accepting Complete Denture Patients

Cost of a set of Dentures - \$200

For Information call 763-3363

## FISH DINNER THURSDAY, MARCH 6

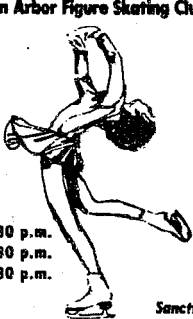
Serving Starts at 5 p.m.

ST. ANDREW'S CHURCH DEXTER

Adults: \$4.50

Children: \$2.50

Presented by the Ann Arbor Figure Skating Club



**VETERANS ICE ARENA 761-7240**

Fri., March 7 - 7:30 p.m.  
Sat., March 8 - 7:30 p.m.  
Sun., March 9 - 2:30 p.m.

**TICKETS:**  
\$4.00 Advance  
\$4.50 At Door

**STUDENT NIGHT FRIDAY:**  
\$3.00 Advance  
\$3.50 At Door

Sanctioned by the USFSA

**MELODY ON ICE**

His Irish eyes were smiling but look who is laughing now. The "baby" of the Class of '53 is now part of the "Over The Hill Gang"!

Come on in and wish the "Old Pharmacist"

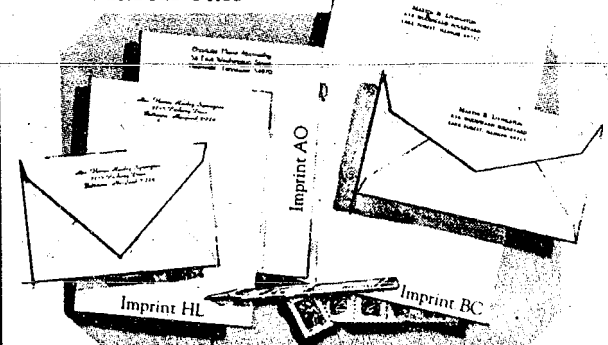
DANIEL JOSEPH MURPHY  
a  
HAPPY 50th BIRTHDAY  
on March 10



From All Your Faithful, Hard Working Employees

## The Chelsea Standard

Save 50%  
March Sale



Rytex Antique Vellum Stationery

10.95  
regularly \$22

The subtle laidmark pattern in this handsome paper dates back to the beginning of papermaking when handmade sheets were placed on latticed racks to dry in the sun. Today Antique Vellum still bears this handworked touch, refined for use with modern pen or typewriter. Select from luxury shades of white, pale blue or soft grey paper in princess (5 1/4") or monarch (7 1/4 x

10 7/8") sizes. Choice of imprints shown (HL, AO, BC) in deep blue or dark grey ink. Gift boxed. 100 princess sheets and 100 envelopes or 80 monarch sheets and 80 envelopes.

Suggestion: 50 extra, unprinted sheets for second pages . . . \$4.00 with order.

## THE CHELSEA STANDARD

300 N. MAIN ST., CHELSEA, MICH. 48118

Please send \_\_\_\_\_ boxes ANTIQUE VELLUM on sale for \$10.95 a box.

Include ☐ (check) 50 extra, unprinted sheets for \$4.00. Please Add 4% Michigan Sales Tax

Imprint Name \_\_\_\_\_

Address \_\_\_\_\_

City, State, Zip \_\_\_\_\_

Check paper choice, imprint style and ink color

Princess size: ☐ White (3500) ☐ Blue (3550) ☐ Grey (3560)

Monarch size: ☐ White (3600) ☐ Blue (3650) ☐ Grey (3660)

Imprint style: ☐ (HL) ☐ (AO) ☐ (BC) Ink color: ☐ Blue ☐ Grey

## ★-ANN ARBOR HOME & LEISURE LIVING SHOW

★ OUTSTANDING EXHIBITS ON HOME REMODELING, NEW HOMES, BATHS & KITCHENS, ENERGY SAVING IDEAS, LANDSCAPING, INTERIOR DESIGN, FURNITURE, WATER HEATERS, HOT TUBS AND MANY OTHER EXCITING LEISURE LIVING IDEAS

MARCH 7-9, 1986

in the UM Track & Tennis Building on State Street and Hoover Street

FREE ADMISSION

FREE ADMISSION

With a SPECIAL SECTION of SAILBOATS • POWERBOATS • R.V.'s

SHOW TIMES: Fri. 3-9 p.m.; Sat. 10 a.m. - 9 p.m.; Sun. 10 a.m. - 6 p.m.

## DRAINS and SEWERS CLEANED ELECTRICALLY

SINKS  
SUMPS  
TOILETS



PROMPT SERVICE

FLOOR  
DRAINS

MAIN  
LINES

STORM  
SEWERS

SEPTIC TANKS-Cleaned, Installed, Repaired  
DRAINFIELD & OTHER EXCAVATING

• RESIDENTIAL • COMMERCIAL • INDUSTRIAL

BOLLINGER SANITATION SERVICE  
PHONE (313) 475-2097





THE CHELSEA EXPRESS was the theme of the freshman class entry into the ice sculpture contest last week during Winter Carnival at Chelsea High school. The team had to fight with snow that wouldn't pack, and bitter winds. In the back row, from left, are Anna Flintoft, Mindy Ryan, and Scott Salamin. In the front, from left, are Maria Kattula and Laura Unterbrink.

## Ann Arbor Symphony Band Offering Concert

On Saturday March 9, the Ann Arbor Symphony Band under the direction of Victor Bordo will present a special concert, a March Concert of Marches. The concert will be at 3 p.m. in Pioneer High school's Schreiber Auditorium.

The program, consisting of marches from all over the world, will appeal to people of all ages. Military marches, ceremonial marches, and marches celebrating various holidays will be performed, including a variation of one of the greatest marches, "The Stars and Stripes Forever," composed by John Philip Sousa.

Other selections include: "Three Revolutionary Marches," Smetana; "Alia Marcia," Sibelius; "Guadalcanal March," Richard Rogers; "Coronation

March," Tchaikovsky; "Country Band March," Charles Ives; "Valdres," Hanssen; "The Circus Bee," Fillmore; "Il Bersagliere March," Boccalari; plus much more.

Parents of children who play instruments in the school program are encouraged to attend with their children. The concert is free.

### CHS Class of '81 Plans for Reunion

Members of the Chelsea High school class of '81 are asked to call Rob Schulze, 475-8759, to help plan and set the date and meeting place for a class reunion.

## Hospital Prepares To Face Possible Area Disasters

Chelsea Community Hospital serves an important role as a health care facility in the communities it serves. In the event of a natural or other type of disaster individual and families from the surrounding county or counties involved will most likely come to the hospital to receive necessary medical treatment or triage. This makes preparedness on the part of the hospital essential to the health and safety of the county.

Disasters such as tornados, fires, flooding or accidents are among those to which the hospital must be prepared to respond. To do this, the hospital has declared Feb. 14-March 14 Disaster Awareness Month. Staff from all areas and departments of the hospital are participating in voluntary "awareness quizzes" and other activities to raise awareness of those steps necessary in responding quickly and efficiently to a disaster.

Emergency services, communications, transportation and the movement of patients and staff in a disaster are being reviewed and rehearsed.

The thought of any type of disaster occurring is not something one likes to think about. Yet in such an event, it is good to know that Chelsea Community Hospital is prepared.

## Mileage Rate Tax Deduction Has Been Increased for '85

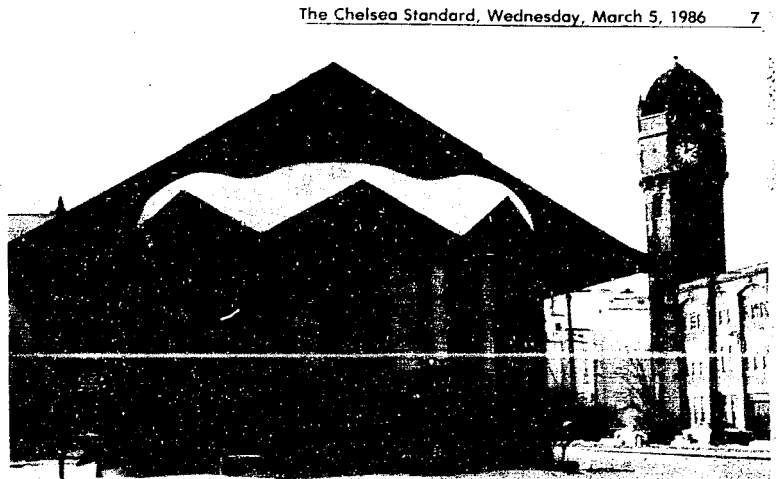
The standard mileage rate deduction for the first 15,000 miles of business use of a personal car or truck has increased to 21¢ per mile for 1985, according to the Internal Revenue Service. For every business mile over 15,000 miles, or a fully depreciated car, 11¢ per mile should be used.

The standard mileage rate gives taxpayers a fixed deduction per business mile. This method cannot be used if the car is leased or for hire, or if more than one car is used in the business at one time. The standard mileage rate also cannot be used if the taxpayer has claimed a Section 179 deduction or additional first-year depreciation or if the taxpayer has claimed depreciation using any method other than straight line depreciation.

## USDA Cautions Participants In Dairy Termination Program

Dairy farmers who anticipate submitting a bid to participate in the recently enacted milk production termination program should be advised that changes in the size and composition of their dairy herds may effect their eligibility for the program, warns Milton Hertz, acting administrator of USDA's Agricultural Stabilization and Conservation Service.

The Food Security Act of 1985 provides that participants in the program give information on the size and composition of their dairy herds during a base period and the size and composition of their dairy herds at the time they submit a bid.



WHEN THE LAST SNOW IS GONE the roof will be inspected and the repainting of the depot—starting again from the bare wood—will

begin. Funds are available for beginning of construction season in April.



Venus, the second planet from the Sun, is the only one that rotates in a direction opposite to its orbiting motion.

## H&R Block Found Jane Walker

**\$2,245**

"Couldn't have done it without you!"

This year we're pledged to finding more Americans the biggest tax refund they have coming. What can we find for you?

**H&R BLOCK**  
WHERE MORE AMERICANS FIND A BIGGER REFUND.



**105 S. MAIN**

Open Monday through Saturday, 9-6. Phone 475-2752

**OPEN TODAY - APPOINTMENTS AVAILABLE**

# The Wolverine Auto/Truck Plaza

## is now offering

# 2 LARGE EGGS, TOAST & COFFEE for only -- 99¢

(Served Any Time, Any Day, Now Thru April 1st)

### Also in Our Restaurant:

Beginning Saturday, March 8th and every Saturday after that from 11 a.m. to 8 p.m.

## ALL-YOU-CAN-EAT SPAGHETTI

Served with meat sauce, garlic bread, tossed salad and beverage

FOR ONLY **\$2.99**

## We're looking for a few good employees

We offer full-time schedules, good wages, excellent benefits, and great working conditions.

**Apply Anytime, day or night!**

**The Wolverine Auto/Truck Plaza is truly a surprise!**

### In Our Gift Shop:

**HUGE SALE DAKOTA JEANS**  
**\$13<sup>99</sup> 1 pr. 2 pr. \$20<sup>00</sup> for**

The Area's Largest Selection of Electronics

**CR-20V AM/FM IN-DASH CASSETTE**

With a pair of 6x9 3-way 200-watt speakers  
Reg. \$119.95 **NOW \$44<sup>95</sup>**

Or Sold Individually:

**RADIO \$28<sup>95</sup> - SPEAKERS \$19<sup>95</sup>**

Open 24 Hours  
7 Days A Week

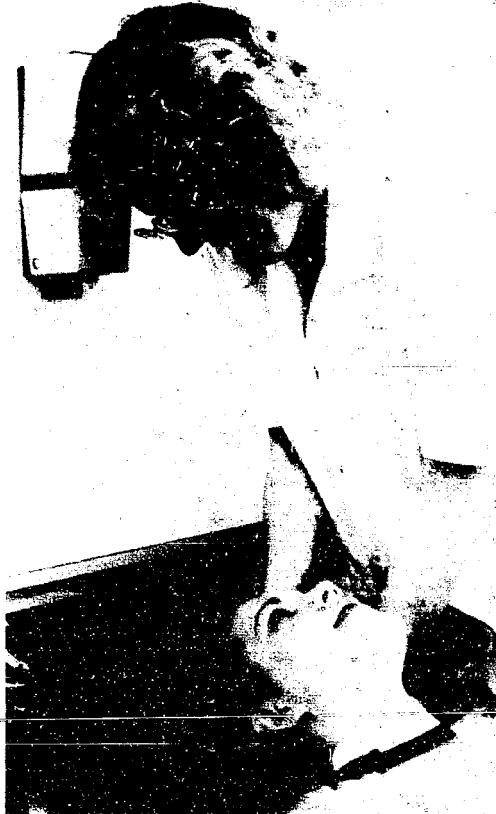
**COMING SOON — CARRY-OUT CHICKEN!**

**I-94 & BAKER RD., DEXTER - Ph. 426-3951**

Michigan's Finest Auto/Truck Facility



**CHELSEA SENIOR KELLY FLETCHER** takes the role of a model for one of her fellow students at the Huron Valley Beauty Academy. Kelly is having a mask applied. The academy, set up by the South and West Washtenaw Consortium, gives students 1,500 hours of instruction over two years in everything from facials to permanents. Students also earn 3½ credit hours a year.



**CHELSEA JUNIOR AME KUENZEL** shampoos the hair of a real customer as part of her training at the Huron Valley Beauty Academy. Kuenzel is one of three Chelsea High school girls enrolled in the academy, which is owned and operated by the Southwestern Washtenaw Consortium. Kuenzel will attend the school for two years, including this summer, and will be eligible to take the state licensing exam upon graduating. It's all part of the consortium's vocational education program.

## Cosmetology Course Offered By Consortium

Every weekday morning, six girls from Chelsea and Dexter High schools go to Ann Arbor to learn how to work on hair and nails.

The students are part of a revamped program by the South and West Washtenaw Consortium, along with Ann Arbor public schools, that is designed to give the young ladies (boys are welcome, but none have signed up so far) a complete education in cosmetology. When they complete the two-year course, they'll be ready to take the licensing exam given by the Michigan State Board of Cosmetology. Many of the graduates will eventually own businesses.

The two-year course, for students at Dexter, Chelsea, Manchester, Saline and Milan High schools, and Ann Arbor high schools, takes a big commitment on the part of the students. They spend three and a half hours each day at the school, called the Huron Valley Beauty Academy, for two full years, including summer.

Chelsea students enrolled include Kris Hitts, Ame Kuenzel and Kelly Fletcher. Dexter students are Jennifer Ledwidge, Lisa Parabaugh and Billie Laraway.

"We have an elaborate screening process," said Dave Mieras, director of the South and West Washtenaw Consortium. "We take a very close look at a student's past attendance and discipline record. We also want students whose parents will be

supportive since many of the girls have to come a long way every day to class."

The school is unusual in that it is wholly owned and operated by the consortium. Until this year, the consortium operated on contracts with private cosmetology schools in Ann Arbor to provide the service.

"We had a lot of problems with that arrangement," Mieras said. "We became very concerned about the curriculum, and we wanted to make sure the school maintained a qualified staff."

The school is located in a 4,000-square-foot storefront on W. Stadium Blvd. near Liberty Rd., behind Farmer Jack's supermarket. It was intentionally located in a shopping center rather than in one of the schools for business reasons. Few people think to go to a public school for a permanent.

The school offers a complete line of cut-rate services, from body waves to manicures. A senior student performs the work, supervised by one of the instructors. Eventually, Mieras hopes the walk-in business will subsidize the storefront rent and utilities, or about 40 percent of the cost of the school.

Students pay nothing. It is treated just like any other vocational education class. All equipment, such as blow dryers, curling irons, and even a personal mannequin, is provided.

The training is rigorous. Students have an hour or more of "theory" work, followed by

hands-on practice of techniques. They have to work for 350 hours before they can work on anyone other than a classmate or their mannequin. They receive grades, just like students in any other class.

The course is good for three and a half credit hours a year. It provides a total of 1,500 hours of instruction.

"If a student were to try to buy this education on her own it would cost anywhere from \$2,800-\$3,600," Mieras said.

The school's staff is headed by Michelle Brunoch, who moved to Ann Arbor from Traverse City. She is assisted by Jody Glienski, another instructor, and Cynthia Cramer, an assistant.

There are 45 girls in the program, and Mieras said the school has a capacity of 80.

The first organization of black workers was the American League of Colored Laborers, located in New York City in 1850, according to "Labor Firsts in America," a publication of the U. S. Department of Labor.

Elect  
**RICKIE MONIER**  
For Trustee

Willing to meet  
Monday, March 10, 1986

### MARGIE'S UPHOLSTERY

FREE ESTIMATES  
• Large Selection of Materials  
• Upholstery Supplies  
• Repair Service  
Pick-Up and Delivery Available

MARGIE SMITH  
Ph. 1 (517) 536-4230  
Call Collect between 8 a.m.-6 p.m. Monday thru Saturday  
6245 Brooklyn Rd., Napoleon

### Evangelist Team Will Appear at Mt. Hope Bible Church

Evangelists Mark Yates, Kelly Sensenig and wife Lois, will be appearing at Mt. Hope Bible church at 12884 Trist Rd., March 12-16 in a ministry entitled "Old Time Bible and Brass."

The hymns and songs to be presented are of past years. These old songs call for Christian commitment, encourage the heart, give hope for the future, and call for sinners to come to Christ, according to pastor Ken Bilsborow.

Services are scheduled at 7 p.m. Monday through Saturday and at 11 a.m. on Sunday.

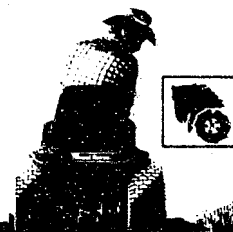


Law Offices  
**DONALD H. KENNEY**  
general practice

Family law, business & corporate,  
probate & wills, trials

3238 Broad Street  
Dexter

426-4424



## Wheel Horse Power

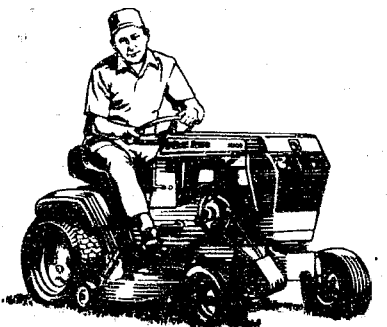
ONLY  
**\$1999**

**SAVE \$200**

with 36" r.d. mower

### FEATURES INCLUDE:

8 HP Kohler engine • 8-speed Uni-Drive™ transaxle • No-tool Tach-a-matic™ hitch system • Manual attachment lever • Structural steel frame • Pinion & sector steering • Sealed beam headlights • Cast-iron front axle • Greasable spindles



Model 308-8

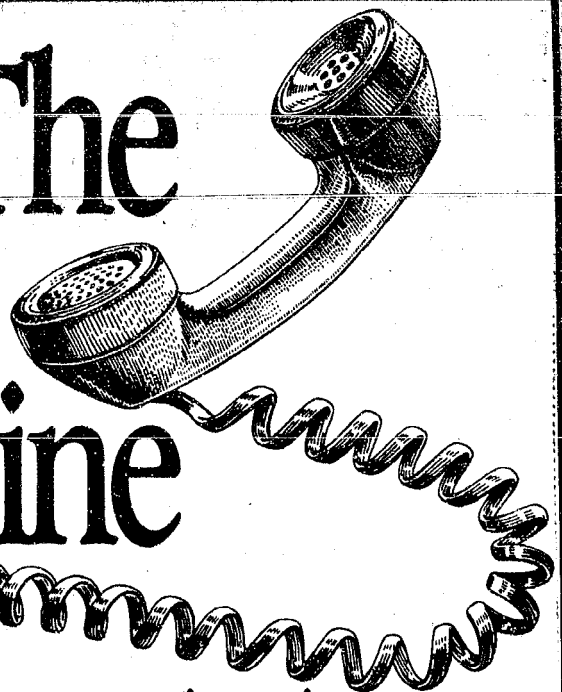
8 different models and horsepower  
**ON SALE AT SPECIAL PRE-SEASON PRICES**  
Put one on lay-away now!

Open  
Daily  
8:30  
to 5:30

**GAMBLES**  
110 N. Main Chelsea 475-7472

Open  
Monday  
& Friday  
8:30 to 5:30

# The IRA Hotline



## Tax Benefits at your Fingertips

Introducing the IRA Hotline, a special telephone service dedicated to assist busy people like you in opening an Individual Retirement Account at Citizens Trust.

By calling 994-5555, Ext. 1RA during regular business hours, an IRA Representative will answer your questions about fixed and floating rate individual retirement accounts and assist you in completing an IRA application over the phone. It's that easy.

And, your annual contributions and interest earnings are tax-deferred until retirement. So, you'll enjoy tax benefits now and additional financial security later.

Call Citizens Trust and ask for our IRA Hotline. Our solution to a very taxing problem is just a phone call away.

All individual retirement accounts are subject to substantial interest and tax penalties for early withdrawal.



**CitizenTrust**  
Member FDIC

ANN ARBOR • AUGUSTA TOWNSHIP • BRIGHTON • CHELSEA • LODI TOWNSHIP • SALINE

## FINAL CLEARANCE SALE

PENDLETON SHIRTS  
FLANNEL SHIRT JACS  
DUOFOLD UNDERWEAR  
THERMAL UNDERWEAR

ALL  
**1/2 OFF**

All Jockey Underwear . . . . . **20% off**

All London Fog Coats & Jackets **30% off**

**STRIETER'S MEN'S WEAR**

Since 1914.





**DEXTER TOWNSHIP SUPERVISOR** Jim Drolett, shown before the zoning map in Dexter Township Hall, explained the township board adopted a new fee structure at their Jan. 21 meeting, responding to complaints from citizens who said they had followed procedures set down for new or additional construction on their property, but realized they paid the same fees as other citizens who proceeded with construction without filing in advance for proper permits. When it was discovered the second group improperly began

their construction, they filed AC (after construction had been either started or completed) and the result was they paid the same amount in fees as those who had filed in advance of the work being started. They felt this was unfair, they said. Drolett explained the township board agreed the complaints were justified and took action to amend the fee structure to make it costlier for the people who seek permits or hearings with the zoning board after beginning construction.

## Dexter Township Revamps Zoning Permit Fee Structure

Dexter township board members took action at their regular meeting, Jan. 21, to revamp the fee structure for citizens requesting zoning permits and/or hearings before the township zoning board, a step preparatory to requesting a building permit from the county building inspector.

Supervisor Jim Drolett explained the board had received several complaints from township citizens who felt other people who ignored the procedure to file for zoning permits before beginning construction had filed later, but were not required to pay any penalty amount. Instead, those people really paid the same amount as those who followed the proper procedures, some complainants related.

The township board sought to correct this situation by adopting the new fee structure, Drolett said. Under the new rate structure, those applying for a zoning permit in advance of beginning new or additional construction on their property will be charged \$10, while those who seek a zoning permit after construction has begun will be charged \$100.

The fee for requesting a hearing before the township zoning board of appeals will be \$50 for those who place their request prior to beginning construction, but for the people who request a hearing with the zoning board of appeals after their construction starts, the fee will \$200.

Section 10.02 of Article 10 from the township zoning ordinance states: "No building or other structure, including farm buildings and structures, shall be erected, moved, added to, or structurally altered unless a building permit has been issued therefor by the building inspector. No building permit shall be issued by the building inspector except in conformity with this ordinance, unless he receives a written order from the board of appeals in the form of an administrative review or variance as provided by this ordinance."

The section further states, "Plans submitted in application shall contain information necessary for determining conformity with this ordinance."

Supervisor Drolett explained

Dexter township is one of the faster growing townships in Washtenaw county, with new construction a major item in the growth of the area. Recent statistics published in the report from the Washtenaw County Planning Commission indicate Dexter township will gain from 2,000-5,000 people by the year 2005. Total population of the township is now listed in the 2,000-4,999 category.

Anyone wondering whether or not they need a zoning permit or a hearing before the zoning board may call Dexter township zoning inspector Merritt Honbaum at 475-7448. If residents own a non-conforming lot (and there are many non-conforming lots in the township), a variance will probably be needed. Again, the zoning inspector will be able to answer any questions and save residents some dollars.

At the Dec. 17 board meeting, Robert H. Burns of Portage Lake was appointed "blight inspector" by the township board. The board took the action to free Honbaum for other duties of the zoning inspector's office.



**SHOW AND TELL** in Sherri Plank's North school kindergarten class included a colt, horse and sheep owned by the Powers family of Chelsea. The three-week old colt was the hit of the show, as was the one-week old lamb (not pictured). In the front row, from left, are

Kathy Powers, Jared Powers and Lindsay Powers. In the back row are Joshua Powers, Jean-Pierre Moulleseaux, Tim Rickerman, Sarah Edman, Rod Powers, Jesse Roberts, John Carter and Karen Pieper.

## Questions Arise Over Use of Weed Killer in Hi-Land Lake

Concern over a long range effect of treating the waters of Hi-Land Lake with chemicals to eliminate or at least control the unusual growth of eurasian water milfoil in the lake prompted members of the Portage and Base Lakes Owners Association to invite officials of the Hi-Land Lake Association to attend the monthly meeting of the PBLA.

as reported in their recent newsletter.

Vi Scott and Bob Robey, president of the Hi-Land Lake Association, attended the meeting as well as William Krauss, president of the firm selected to apply the chemical(s).

PBLA directors also invited to the meeting Dr. Wally Fusilier, water scientist from Water Resource Consultants, Ellen Scavia, executive director of the Huron River Watershed Council, Bobby Lawrence from the Washtenaw County Co-operative Extension office and Dexter township supervisor Jim Drolett, hoping for an exchange of information on the matter.

Hi-Land Lake residents are faced with a problem of heavy weed growth in their lake. Ellen Scavia told The Chelsea Standard this week that eurasian milfoil is a weed highly resistant to many of the chemicals ordinarily used to control weeds. "When certain chemicals are applied, other weeds may be destroyed—but eurasian milfoil is characterized

by a system of dense roots which are very difficult to destroy," she said. Apparently 2-4-D is one of the few chemicals capable of eradicating eurasian milfoil, even temporarily.

Only certain procedures and specific chemicals are allowed in Michigan lakes and streams by the Michigan Department of Natural Resources, and Maureen Hein, aquatic biologist with the Inland Lakes Management Unit, Division of Land Resource Programs, explained early this week to The Chelsea Standard that no request for permit has yet been received by either the Hi-Land Lake Association or Krauss' firm, Aquatic Management Services, which the Hi-Land Lake people explained would be the applicator.

"No permits are ever issued before March 1," related Ms. Hein. In seeking a permit to treat Michigan waters with chemicals, she explained the prospective applicator must indicate the amount of chemical or chemicals, place of treatment

and a host of additional information. The DNR considers each application on an individual basis, she added.

She felt the chemicals suggested to control the eurasian milfoil would not be contrary to the guidelines of the DNR, but did confirm that the frequency of treatment might go beyond a single application (and usually multiple treatments were allowed during the year).

A report listing actual treatment date and amounts of chemical(s) used is required by the DNR from the applicator, she indicated.

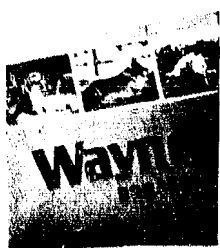
Addressing concerns of the PBLA members, Frank L. Braun, president of the group, said in a letter dated Jan. 20 and sent to Howard Wandell, who heads the DNR Inland Lake Management Unit in Lansing: "We are concerned about the use of 2-4-D to control eurasian water milfoil in Hi-Land Lake, located in Livingston county. We have been assured by the applicator, (Continued on page 13)

## McCALLA FEEDS, INC.

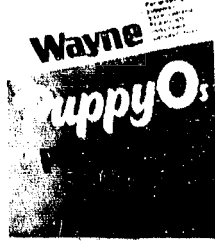
PHONE 313-475-8153  
12875 OLD US-12 CHELSEA, MICH. Wayne PET FOODS

You Are Invited  
to Our 25th  
**ANNIVERSARY DAY**  
**SATURDAY, MARCH 8th**

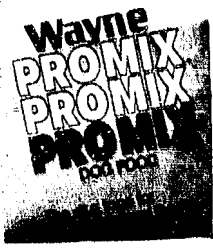
PANCAKES & SAUSAGE LUNCHEON 10 a.m. to 2 p.m. - DOOR PRIZES  
— Ralph and Ken McCalla  
**Save \$2.00 on Purchase of Wayne Dog Foods**



50 lbs.  
SALE PRICE  
**\$13.00**  
Reg. \$15.00



40 lbs.  
SALE PRICE  
**\$11.99**  
Reg. \$13.99



50 lbs.  
SALE PRICE  
**\$10.60**  
Reg. \$12.60

### Wise Buy of the Month



### Chelsea Hardware

110 S. Main St., Chelsea

Ph. 475-1121

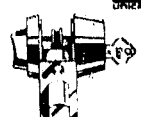
### MARCH

#### WISE BUY

#### 15.85 TUBULAR DEADLOCKS

1" bolt with hardened steel insert and rotary cylinder collars. Double cylinder with optional composite keyway available.

SALE PRICE **\$8.99**



#### 99c WINDSHIELD WASHER SOLVENT

Keep a supply on hand so that you drive with safety.

SALE PRICE  
**89c**



#### 10.10 ROLLER MOP

Just push on handle, rollers wring sponge automatically. Special cellulose sponge stays soft, last long.

SALE PRICE  
**\$5.99**



#### 1.79 FUZZY GLOVES

Our most popular work gloves. Warm and comfortable. #4284

SALE PRICE  
**\$1.19**



#### 36.49 HOUSEHOLD STEPLADDER

6 ft. stepladder with extruded one-piece top. Double-angle bracing on bottom step. #366

SALE PRICE  
**\$26.49**



# SPORTS

## Bulldog Cagers Lose To Pinckney on 3-Point Play in Final Seconds

A three-point play by forward Steve Black with two seconds to go gave the Pinckney Pirates a dramatic 54-53 come-from-behind victory over the sliding Chelsea Bulldogs last Friday in the Chelsea gym.

The Pirates never led until that final free throw.

The loss gave the Pirates and Bulldogs identical 2-10 marks in Southeastern Conference play, a dead-heat for last place. Pinckney's only league victories came at the expense of the Bulldogs.

In other Chelsea action last week, the Bulldogs lost a non-conference match to Dearborn, 71-45, in Dearborn.

"We just didn't play very well, and it didn't really matter who was on the floor," said Chelsea coach Rahn Rosentreter of the Pinckney game. "We should never have been in a position to lose at the end of the game."

The Bulldogs played inspired basketball for the first few minutes, jumping out to a quick 8-0 lead. But five turnovers, of all varieties, wrapped around a field goal by Dan Bellus, put Pinckney right back in the game at 10-7. That set the trend of the game. Good basketball followed by sloppy play. By the end of the first quarter, Chelsea led 14-7. They stretched the lead to 10 points by half-time, 29-19.

Pinckney began the third quarter with a three point play, off a steal, by Rob Henry. The Pirates went on to close the lead to three points by the middle of the quarter, 31-28, before falling behind by seven points at the end of the period, 40-33.

A free throw by Mike Merkel on a technical foul put the Bulldogs up by 10 points, 51-41, in the middle of the fourth quarter. After that it all began to fall apart.

Turnovers plagued the Dogs the rest of the way. They committed 12 for the quarter and three in the final 1:40. Although Chelsea ended with a respectable 65 percent free throw shooting on the night, they failed to make any in their last three one-and-one situations, including one with 19 seconds left and the Bulldogs ahead 53-51. The combination was too much to overcome.

The loss spoiled "the best game of the year," by Chelsea forward Mark Bareis, Rosentreter said. Bareis had 25 points on 13-16 free throw shooting, and 19 rebounds, eight of them offensive.

Chelsea shot a reasonable percentage from the floor for the night, 48-45, or 40 percent. A substantial rebound edge went to the Bulldogs as well, 34-20.

"I don't know if we ever really got into an offensive set in the second half," Rosentreter said. "In the last three or four games, we've haven't been able to do much in the second half, especially the third quarter."

Other Chelsea scorers included Ken Martin, nine points, John Jedele, seven points, Bellus, five points, Todd Starkey and Ray Spencer, two points, and Merkel, one point.

The Dearborn game was "a mirror image," of the Pinckney game, Rosentreter said.

Chelsea again took a quick lead, 22-16, with two minutes to go in the first half, before the collapse began. By the end of the

### Laura Anderson Playing Softball This Year for MSU

Laura Anderson, daughter of Richard and Josephine Anderson, will be playing softball for Michigan State University this spring. She played third base on Chelsea's 1985 State Championship team.

The Spartan team has been lifting weights, running and working out since October. Since winter term, their workouts have stepped up to twice a day. They will be going to Florida during their spring break and playing several games there before the regular season starts April 2.

Laura is looking forward to playing against former Chelsea pitchers, Amy Unterbrink and Kelly Hawker, when MSU plays Indiana (April 25-28 in East Lansing) and Wayne State (April 22 in Detroit), respectively.

third quarter the Bulldogs were down 52-32.

Shooting told the story. Chelsea hit only 6-31 in the second half, while Dearborn was 20-30.

"If there was anyone I would compare them to it would be Saline," Rosentreter said. "They were big and strong, and they completely took away our inside game."

Harvey and Jedele, who split time at center, didn't score a point between them. Bareis was held to an anemic five points, way below his average.

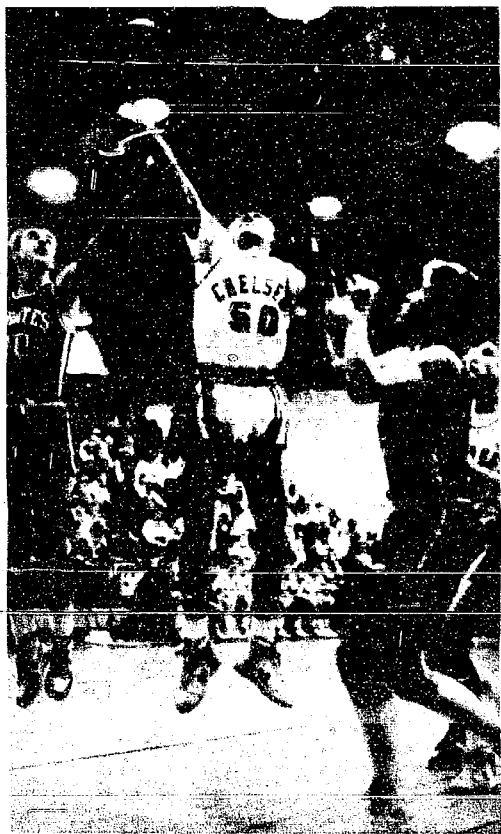
"Our rebounding was pathetic," Rosentreter said. "That was especially true on the

offensive boards. They packed the zone in and we could never get inside."

Martin and Bellus managed to hit their jumpers for 18 and 17 points, respectively. Production fell off dramatically afterward, though, as Matt Bohlender had three points, and Starkey scored two.

The Bulldogs were scheduled to open district tournament play last night at Jackson Lumen Christi against Dexter. They would play Brooklyn Columbia Central game if they get by the Dreadnaughts.

Chelsea ended the regular season with a 7-13 over-all mark.



CENTER JOHN JEDELE goes up strong for two points during last Friday's loss to the Pinckney Pirates. Jedele scored seven points on the night, although the Bulldogs lost their final home game, 54-53, at the buzzer.



TRYING TO FIND THE OPEN MAN is Chelsea senior forward Dan Bellus, while Pinckney center Steve Oestreich holds his position. Bellus scored five points on the night, and the Bulldogs lost their sixth straight game, and second in a row to the Pirates, 54-53.

### All-Conference Honors Awarded Basketball Players

Mark Bareis and Ken Martin of Chelsea, and Eric Meilstrup and Kyle Menard of Dexter were given post-season honors by the Southeastern Conference basketball coaches.

Meilstrup, a senior guard, made the all-conference first team, along with Lincoln's Joe Ross, Bill Eaddy of Milan, and Mark Pearsall and John Anderson of Saline.

Bareis was named to the second team, along with John Hartley of Tecumseh, Pat Condon of Saline, Ernest Walker of Milan, and Jesse Broome of Lincoln.

Both Martin and Menard made the honorable mention teams.



LOOKING FOR TWO is Chelsea forward Mark Bareis during last Friday's home loss to the Pirates. Bareis had "his best game of the season," according to coach Rahn Rosentreter as the junior scored 25 points and grabbed 19 rebounds.

## JV Cagers Drop Final 2 Contests

Chelsea JV basketball team dropped its final two games of the season last week, one a double-overtime loss to Dearborn on Tuesday, 60-57, and the other a 54-46 loss to the Pinckney Pirates in Friday's final home game.

The Bulldogs had their chances to win both games, according to Chelsea coach Ted Hendricks.

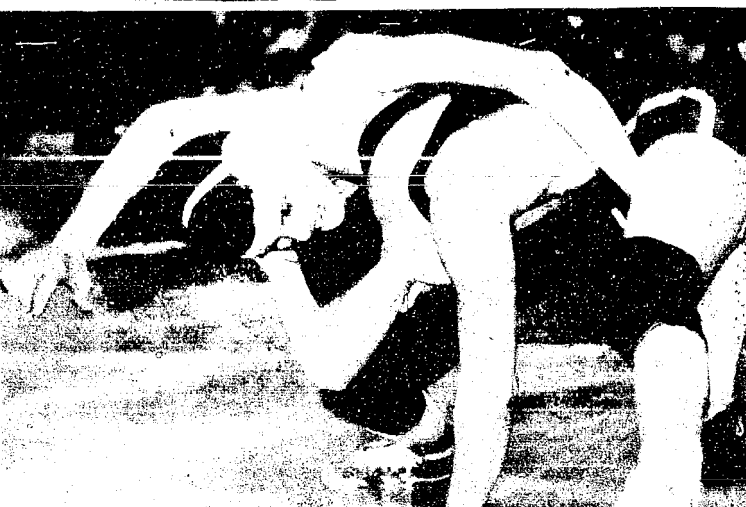
In the Dearborn defeat, the Bulldogs came back from a three-point third quarter deficit to send the game into overtime. Both teams scored four points in the first OT, knotting the score at 54. But poor Chelsea shooting in the second overtime clinched the game for the host team. The Bulldogs made 3-10 shots in overtime.

"I was probably never more upset during the season than I was with this game," Hendricks said. "At one time in the fourth quarter we took the ball down seven straight times, didn't execute our offense, and didn't score a single point. If we had scored on any of those possessions, we would have won the game."

Hendricks' starting line-up featured several second-teamers. That strategy didn't make much difference in the outcome since the score was tied at half-time at 27.

Chelsea lost the game despite a whopping 37-21 rebound advantage, including 15 offensive rebounds. They also shot 42 percent from the field.

Matt Steinhauer scored a game-high 28 points. Clay Hurd finished in double figures with 12 points, Matt Monroe had five, and Greg Boughton, Tim Anderson, Kevan Flanigan and Junior



PETE HANNA, left, finished sixth in the class B state wrestling meet in Charlotte last week-end. Pete wrestled in an extremely difficult 119-pound division.

## Pete Hanna 6th in State Tournament

Chelsea senior Pete Hanna took sixth place in the class B state wrestling meet in Charlotte last week-end.

Hanna, at 119 pounds, won his first two matches on Friday, before losing a tough 3-2 decision to the eventual state champion in the semi-finals on Saturday.

"I understand exactly how Pete felt about losing that match because I did exactly the same thing my sophomore year in high school," said Chelsea coach Kerry Kargel. "That semi-final match is the key to the whole thing, and it tends to grind you down and wear you out. Pete put everything into it and was completely drained afterward. If Pete had won that match he would have had a good shot at being state champion since the boy who beat him pinned his opponent in the finals."

That semi-final opponent was

Jimmie White, of Muskegon Orchard View. White escaped in the last 17 seconds to pull out the match.

On Friday, Hanna pinned Pat McQuire of Centerline, and won a 2-0 decision over Gene Sharp of Grand Rapids Northview.

After Saturday's semi-final match with White, Hanna lost his next match to Dave Beck of Hillsdale, 12-7, a guy who has beaten him several times this year. In his third match of the day he lost to Conn Ellison of Fenton, 15-7.

"You have to be a wrestler and you have to be someone who's had a lot of competition to know what it's like to lose in the semi-finals," Kargel said.

"It's just so heart-breaking to come back. I thought Pete might have trouble with Beck because he put everything in that semi-final match. But it's a real honor to finish in the top six."

## Frosh Cagers Close Season at 5-13 Mark

Chelsea's freshman basketball team started their final week by losing a one-point 48 to 47 decision to Tecumseh Monday at the Chelsea High school.

Leading 13 to 10 at the half, the Bulldogs didn't handle Tecumseh's press well in the third quarter and fell behind, 32 to 25, entering the final eight minutes.

Tecumseh scored first increasing their lead to nine then Chelsea went to work, scoring 22 points in a hectic fourth quarter that had the fans cheering till the very end.

"We played very good defense in the first half allowing them only 10 points," stated coach Dave Quiter, "but then we didn't handle their press in the third quarter and gave up 22 points. As they have done all year the kids didn't give up and we came back in the fourth quarter and nearly

pulled it off. Having three starters foul out didn't seem to bother us in that quarter as everybody contributed."

John Collins led Chelsea scorers with 18 points, Dave White had 10, Jeff Marshall 8, Dave Adams 5, Larry Nix 4 and Loren Keezer 2.

Jeff Marshall helped Chelsea to a 47 to 31 rebounding edge over the taller Indians with 12 boards. John Collins and Dave White each had nine with Loren Keezer pulling down seven.

Hampering the effort was the high total of turnovers, 30, by the Bulldogs, their highest total of the year.

In their second game in two days the freshmen lost to East Lansing's "B" squad by a 64 to 49 margin in a game played Tuesday.

(Continued on page 13)

## When you're in business, buy the best...

The new GUARDIAN POLICY for MICHIGAN BUSINESSES

Now the right combination of coverages you need for your business is available in one policy—the Business Guardian from Farm Bureau Mutual Insurance Company of Michigan. It provides customized protection for stores, offices and apartment buildings, with features like: liability coverages up to \$1 million; no insurance limits for loss of earnings or rent for up to 12 months; automatic insurance amount increases to cover seasonal inventory fluctuations; and an unlimited insurance amount on building glass.

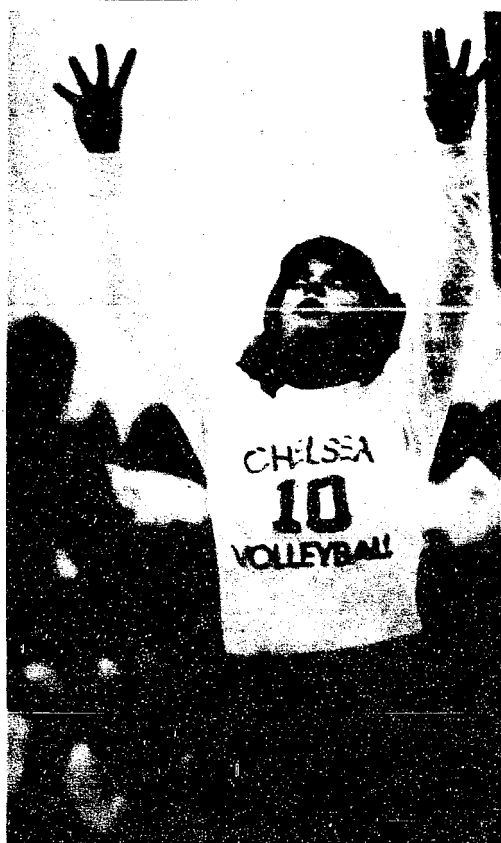
If you're in business in Michigan, find out how the Business Guardian can help you. Call your Farm Bureau Insurance agent today. **MAKING your future a little more predictable**



DAVE ROWE  
121 S. Main, Chelsea, Mich. 48110  
(313) 475-9184







**HALLELUJAH, HERE IT COMES.** Scrappy Bulldog Trish Mattoff prepares to make the set-up for one of her teammates during last week-end's district tournament action. Mattoff scored two points, but the Bulldogs were knocked out in the first round.



**SLADJANA JANICEVIC** prepares to spike the ball back during last week-end's district tournament action against Pinckney. The Bulldogs were eliminated in the first round, although they won the first game. Sladjana was named to the all-league second team.

## Varsity Volleyball Team Eliminated in Tourney

Chelsea varsity volleyball team was eliminated in the first round of the district tournament held in Chelsea last week-end. Jackson Lumen Christi was the eventual winner.

After winning the first game, 15-13, Pinckney came back to win the final two games, 3-15, and 11-15.

"We were behind in the first game, and came back to win it," said coach Karen Tobin. "I was proud of the team because earlier in the season they probably wouldn't have done that."

Heidi Hosner led the team in scoring with 11 points, including seven straight serves in the third game to bring the Bulldogs back from a 1-3 deficit. Mary Lazars

had seven points, Missy Keiser had five, Sladjana Janicevic and Trish Mattoff had two points and Beth Paddock had one.

Tobin also cited the net play of Heidi Hosner.

"We've had good crowds this year and that's been nice," Tobin said. "I'd like to thank everyone who has supported us this year."

Chelsea finished tied for fifth in the Southeastern Conference with Lincoln with a 3-9 record. Tecumseh won the conference with an 11-1 record, followed by Saline at 10-2. Dexter was third at 9-3, Pinckney fourth at 4-8, and Milan last at 1-10.

The Bulldogs had a 4-20 over-all record.

## Outstanding Week For Aquatic Club

Chelsea Aquatic Club's U.S. Swimming Team had another outstanding week-end at the Clarenceville B/C Division swim meet.

The results were as follows:

**8-and-under girls:**

Carey Schiller, 1st in 50-yd. backstroke, :47.65; 3rd in (10-and-under) 50-yd. backstroke, :43.56; 8th in 50-yd. breaststroke, 1:06.35.

**10-and-under girls:**

Christy Gillespie, 23rd in 50-yd. freestyle, :42.70; 9th in 100-backstroke, 1:47.26; 14th in 50-yd. breaststroke, :53.80; 14th in 50-yd. butterfly, :52.09.

**10-and-under boys:**

Joe Casars, 9th in 50-yd. freestyle, :35.30; 4th in 10-yd. backstroke, 1:32.18; 6th in 50-yd. breaststroke, :49.92.

Chris Gibson, 14th in 50-yd. freestyle, :49.42; 18th in 100-yd. backstroke, 1:48.05; 6th in 50-yd. butterfly, :52.09; 12th in 100-yd. freestyle, 1:33.54; 9th in 50-yd. backstroke, :48.35; 4th in 100-yd. breaststroke, 1:50.08; 4th in 100-yd. individual medley 1:43.37.

Bryndon Skelton, 10th in 50-yd. freestyle, :39.73; 28th in 100-yd. backstroke, 1:58.26; 10th in 50-yd. breaststroke, :52.11; 17th in 50-yd. butterfly, :58.56; 5th in 100-yd. freestyle, 1:27.11; 15th in 50-yd. backstroke, :49.68; 5th in 100-yd. IM, 1:44.76.

Matt Fischer, 20th in 50-yd. freestyle, :43.63; 23rd in 100-yd. backstroke, 1:53.38; 12th in 50-yd. butterfly, :55.04; 16th in 100-yd. freestyle, 1:42.06; 18th in 50-yd. backstroke, :45.53; 19th in 100-yd. individual medley, 2:03.59.

Matt Montange, 2nd in 50-yd. freestyle, :35.65; 11th in 100-yd. backstroke, 1:45.39; 7th in 50-yd. butterfly, :53.21; 1st in 100-yd. freestyle, 1:23.63; 5th in 50-yd. backstroke, :46.78; 18th in 100-yd. individual medley, 1:36.04.

Casey Schiller, 3rd in 50-yd. freestyle, :36.06; 6th in 100-yd. backstroke, 1:42.33; 2nd in 50-yd. breaststroke, :48.44; 5th in 50-yd. butterfly, :45.77; 2nd in 100-yd. freestyle, 1:25.65; 1st in 50-yd. backstroke, :45.31; 8th in 100-yd. breaststroke, 1:48.16; 21st in 100-yd. individual medley, 1:37.40.

Jason McVittie, 4th in 50-yd. free, :34.10; 7th in 100-yd. backstroke, 1:33.11; 4th in 50-yd. breaststroke, :48.88; 7th in 50-yd. butterfly, :46.58; 13th in 100-yd. freestyle, 1:21.08; 9th in 100-yd. breaststroke, 1:52.96; 4th in 100-yd. individual medley, 1:26.71.

Colby Skelton, 1st in 50-yd. butterfly, :40.46; 6th in 100-yd. butterfly, 1:45.77.

Freestyle relay of McVittie,

Schiller, Montange, Schiller, Montange and C. Skelton was 3rd, 2:22.01.

**11-and-12 boys:**

Steven Brock, 12th in 100-yd. freestyle, 1:21.23; 4th in 50-yd. backstroke, :41.50; 3rd in 50-yd. breaststroke, :45.72; 29th in 100-yd. backstroke, 1:31.23; 12th in 50-yd. butterfly, :48.47; 2nd in 100-yd. breaststroke, 1:38.79.

**11-and-12 girls:**

Sandy Schmid, 23rd in 100-yd. freestyle, 1:33.30; 31st in 50-yd. backstroke, :52.07; 24th in 50-yd. breaststroke, :52.93.

Monica Hansen, 22nd in 100-yd. freestyle, 1:31.31; 14th in 50-yd. backstroke, :43.35; 23rd in 50-yd. breaststroke, :50.67.

Sara Nicola, 32nd in 100-yd. freestyle, 1:13.18; 13th in 50-yd. backstroke, :37.60; 27th in 50-yd. breaststroke, :43.93.

Erika Boughton, 2nd in 200-yd. individual medley, 3:01.86; 24th in 100-yd. backstroke, 1:29.35; 9th in 50-yd. butterfly, :35.68; 16th in 100-yd. breaststroke, 1:34.14.

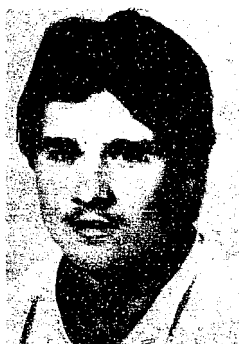
Medley Relay team of Brock, Boughton, Nicola, Schmid was 20th, 2:44.09.

**13-18 boys:**

Brian Brock, 32nd in 50-yd. freestyle, :29.84; 25th in 100-yd. backstroke, 1:20.65; 31st in 100-yd. freestyle, 1:06.69; 31st in 200-yd. individual medley, 2:50.29; 18th in 100-yd. breaststroke, 1:25.54; 30th in 200-yd. freestyle, 2:35.60.



PHIL KASKE



MARK ISSEL

## JV Cagers . . .

(Continued from page ten)

a 4-1 first-quarter tie. Poor Pirate shooting kept the game close.

Pinckney began to pull away in the second quarter, taking a 23-17 half-time lead, thanks largely to three quick steals for lay-ups in the closing minutes. From then on the teams played on fairly even terms.

Steinhauer again played a dominating game with 18 points and 15 of Chelsea's 34 rebounds. Hurd scored five, Morseau, four, John Cattell, three, and Boughton and Monroe, two each.

The Bulldogs finish with an over-all 5-15 mark, 3-9 in the Southeastern Conference.

"I guess I had mixed emotions about the season," Hendricks said. "I had a good time, and I think the kids did too, but I'm not happy with the season. I don't like to see the kids have to go through a tough season. If they learned anything, I hope it was that they have to learn to concentrate if they are going to play winning basketball."

## Mark Issel Now Regular On Ferris Hockey Team

Ferris State College sophomores Mark Issel and Phil Kaske have crossed paths in the development of their hockey careers and now share ice time as members of the Bulldog hockey squad.

Both players are natives of southeastern Michigan. Kaske is from Westland. Issel was graduated from Chelsea High. His parents, the Louis Issels, reside at 300 S. Dancer Rd., Dexter. The duo played junior hockey for the Paddock Pool Saints, but never competed together.

"I've always been just behind Phil," explained Issel. "He played on the A-team and I played on the B-team."

Kaske was recruited to Ferris by former assistant coach Larry Pedrie. At left wing for the Bulldogs, the hard-hitting Kaske has notched six goals and eight assists so far this season.

For Issel, the road to success at the college level has been difficult. Issel was ineligible as a freshman, but was able to enjoy success with Ferris' club hockey team, joining the squad during tournaments last season. Issel was named "Most Valuable Player" when he contributed three goals and three assists to lead the club team to a third-place finish last spring at the National Club Championships in Huntsville, Ala.

Issel served as an alternate player during the first half of the 1985-86 season with the Bulldogs, but has skated a regular shift in their last 12 games. He earned his first collegiate goal at a crucial point in the Bulldogs' 9-9 overtime tie at Michigan State University and added his second in a 9-4 victory at Ohio State.

"Scoring the goal against Michigan State was really exciting," said Issel. "I was pumped up a lot."

Issel, who played one season in Sweden after graduating from high school, feels he is starting to adapt to competitive hockey after nearly a two-year layoff.

Kaske also played an extra season after high school, skating

with the Saints while attending Henry Ford Community College. The move to Ferris State answered a desire to play in the more competitive Central Collegiate Hockey Association.

"It took a lot of adapting to go against stronger, more mature players," admitted Kaske, who has seen his role as a player change since coming to Ferris.

"I was hoping to score more goals this season, but my role is more forechecking, hitting and making things happen," said Kaske.

An auto service major, Kaske feels the main advantage of playing college hockey has been the opportunity to get an education. He looks forward to a career in auto body repair after college.

Issel is studying business administration and hopes to return to Sweden to continue his hockey career after graduation.

With two more seasons remaining at Ferris, both Issel and Kaske are hoping to turn the Bulldog program into a winner before they leave. A freshman-dominated team, the Bulldogs are 15-15-2 on the season and have a sixth-place record of 11-15-2 in the CCHA, with four games remaining in the regular season.

People of all ages die of heart disease and stroke.

With your help, we're out to change that.

American Heart Association

WE'RE FIGHTING FOR YOUR LIFE

## WERE OPEN 24 HOURS 7 DAYS/WEEK

For Your Inspection

Our "BIG LOT" is ALWAYS OPEN for you to browse (even after normal business hours). No salesmen, no fences — no chains — no blocked off driveways. Look them over at your convenience, then come back during normal business hours to make "YOUR BEST DEAL".



DON POPPENGGER — MOR.

Only minutes away. Located 1/4 mile north off I-94, Exit 159. Always a great selection. Warranties included with or available on most vehicles.

Always over 40 to choose from

... CARS/TRUCKS ...

1978 FORD LTD II, excellent transportation	\$1,695
1978 VW RABBIT — front wheel drive	\$1,695
1980 DODGE Aspen, compact automatic	\$2,495
1980 VW RABBIT, beautiful	\$2,995
1981 ESCORT Wagon, automatic trans.	\$2,995
1977 CADILLAC Coupe DeVille, lots of luxury	\$2,995
1981 GMC PICKUP, C1500 series	\$3,995
1980 PINTO 3-dr. Great economy	\$2,495
1983 MERCURY Lynx 4-dr., beautiful condition	\$4,495
1984 FORD Escort 2-dr., locally owned	\$4,695
1983 FORD Escort Wagon, auto with air	\$4,995
1983 FORD F-150 Pickup, priced cheap	\$4,995
1983 BUICK Skyhawk wagon, perfect size	\$5,495
1984 FORD Escort 4-dr., only 11,000 miles	\$5,995
1984 FORD F-150 Super Cab, automatic	\$7,495
1983 DODGE Aries, automatic with air	\$7,495
1983 MERCURY Grand Marquis 4-dr., choose from 2	\$9,995
1983 FORD LTD 4-dr., 6 cyl. with extras	\$9,995
1983 FORD Ranger XL 4x4 with air	\$9,995
1982 OLDS Regency 98 4-dr., 26,000 mi.	\$9,995
1984 COUGAR LS — fac. executive	\$9,995
1983 LINCOLN Town car, red & ready	\$15,900
1984 LINCOLN Continental, 14,000 miles	\$16,900

HAVE A GREAT DAY!

**PALMER** FORD MERCURY

OPEN: Mon. and Thurs 'til 8:30 p.m.

Saturday 'til 12:30 p.m.

In Washtenaw County since April 15th, 1912

CHELSEA

475-1800

Subscribe to The Chelsea Standard!

## UNADILLA STORE AND DELI

SINCE 1873

OLDEST STORE IN LIVINGSTON COUNTY IN OF DOWNTOWN UNADILLA

OPEN ALL YEAR - 7 DAYS 498-2400

WE HAVE GROCERIES - BEER - WINE - LIQUOR - ICE CREAM - WOOD - FISHING NEEDS - GAS - OIL - A LITTLE OF EVERYTHING

**DELI IS OPEN**

**RENIE'S BACK — HOME-MADE PIZZAS**

ALWAYS-BIG SUBS, BREAD STICKS, PIZZA SLICES

SMALL STUFFED PIZZAS

DELI HOURS ARE FRI. & SAT., FROM 5 P.M. TILL CLOSING

REGULAR CHOCOLATE, SALAD & VEGETARIAN PIZZAS

**OUR ICE CREAM PARLOR IS OPEN**

REAL ICE CREAM - NEW HOME-MADE WAFFLE CONES

HOT FUDGE SUNDAES (you can eat dish and all)

16 FLAVORS OF ICE CREAM & PENNY CANDY

BETTY LYTTLE, Owner

**COACH OF THE YEAR:** Chelsea varsity softball coach Charlie Waller was honored by the Michigan High School Coaches Association as its 1985 softball coach of the year. The award covers all Michigan High schools. Waller will be presented the award at a banquet later this month. He guided the Bulldogs to an SEC co-championship with Saline, and the class B state championship. On his team were seven all-state players.

## SPORTSMAN'S Is Now Featuring DINNER SPECIALS

Tuesday . . . . . Pot-Pourri  
ALL YOU CAN EAT WED., THURS., FRI.  
Wednesday . . . . . Chicken  
Thursday . . . . . Barbecued Ribs  
Friday . . . . . Fish Dinner  
(Fried or Baked)

Saturday . . . . . Prime Rib

**SPORTSMAN'S**  
8089 Main St., Dexter Ph. 426-2290



NOTHING'S GOING TO STAND IN THE WAY of Junior Morseau as he drives for a hoop against Pinckney last Friday night, while teammate Matt Steinhauer hopes he doesn't miss. Morseau scored four points on the night, but the JV's lost their final game, 54-46.



TIM ANDERSON goes up for the shot during the JV game with Pinckney last Friday night in the Chelsea gym. Anderson scored five points in the 54-46 loss. The club finished the season with a 5-15 over-all mark and 3-9 record in the SEC.

**MORTON Pellets**  
WITH **SYSTEM SAVER** FORMULA

99.5% PURE SALT  
CONTINUOUS CLEANSING FORMULA THAT HELPS...  
• FIGHT MINERAL BUILDUP...  
• KEEP SOFTENER CLEAN & RUNNING LONGER

**FARMERS' SUPPLY CO.**  
122 Jackson St. Ph. 475-1777

**VILLAGE ELECTION**

To the Qualified Electors:  
NOTICE IS HEREBY GIVEN, That an Annual Village Election will be held in the

**Village of CHELSEA**  
State of Michigan  
AT  
**SYLVAN TOWNSHIP HALL**  
112 W. Middle Street

within said Village on  
**Monday, March 10, 1986**

FOR THE PURPOSE OF VOTING FOR THE ELECTION OF THE FOLLOWING OFFICERS, VIZ:

Three Village Trustees  
One Village President  
One Village Treasurer  
One Village Assessor  
Two Library Board Trustees

**PROPOSITIONS**  
**Sewage Disposal System Improvements Bonding Proposition**

Shall the Village of Chelsea, County of Washtenaw, Michigan, borrow the principal amount of not to exceed Two Million Dollars (\$2,000,000) and issue its general obligation unlimited tax bonds therefor, for the purpose of paying part of the cost of acquiring and constructing improvements to the Chelsea Wastewater Treatment Plant, and rehabilitation and replacement of existing collection sewers to serve the Village of Chelsea?

THE PRINCIPAL AND INTEREST OF SAID GENERAL OBLIGATION BONDS SHALL BE PAYABLE FROM THE GENERAL FUNDS OF THE VILLAGE, AND THE VILLAGE IS REQUIRED BY LAW TO LEVY SUFFICIENT AD VALOREM TAXES, IF NECESSARY, FOR THE PAYMENT THEREOF UPON ALL TAXABLE PROPERTY IN THE VILLAGE WITHOUT LIMITATION AS TO RATE OR AMOUNT.

A II qualified and registered electors may vote on the above bonding proposition.

**Notice Relative to Opening and Closing of the Polls**

ELECTION LAW, ACT 116, P.A. 1954  
SECTION 720. On the day of any election the polls shall be opened at 7 o'clock in the forenoon, and shall be continuously open until 8 o'clock in the afternoon and no longer. Every qualified elector present and in line at the polls at the hour prescribed for the closing thereof shall be allowed to vote.

THE POLLS of said election will be open at 7 o'clock a.m. and will remain open until 8 o'clock p.m. of said day of election.

**EVELYN ROSENTERE**  
**VILLAGE CLERK**  
Accuracy Test, March 4, 1986 2:00 p.m. in room 124 of the County Building.

**Police Hockey Game Proceeds Will Benefit Spaulding for Children**

Chief William Zsenyuk of the Milan Police Department announced today that Spaulding for Children, an adoption agency with headquarters in Chelsea, has been designated to receive the proceeds of the annual Washtenaw County police hockey game.

This year's game will feature the Washtenaw County Police Team vs. the Dearborn Police Team. Starting time is 7:30 p.m. on Friday, March 21, at Yost Arena in Ann Arbor.

Chief Zsenyuk, coach of the team, stated that each year the members vote to select the recipient of the game proceeds. This year they voted to play for the benefit of Nicole Russell's family. Nicole, the daughter of Sheriff's Deputy John and Brenda Russell, died in an accident last December. The Russells in turn requested that all proceeds be given to Spaulding for Children.

Tickets for the game may be purchased locally from Spaulding for Children, 475-8693, or from Sheriff's Deputy Paul Wade, a team member and Chelsea resident.



You can get about 25 pounds of potato chips out of 100 pounds of potatoes.

dent. They may also be purchased at the Washtenaw County Sheriff's Department main office, from the Milan Police Department or at the door. The donation is \$2 per ticket.

**Home & Leisure Living Show Opens Friday**

The 1986 Home & Leisure Living Show will be held March 7-9, at the Track & Tennis Building in Ann Arbor, on the U. of M. campus.

Displays will include everything for the home—new homes, remodeling, furniture, landscaping, kitchens and baths, heating and cooling and much more.

Boats and RV's will be displayed at the show in a special section. Sailboats, power boats and recreational vehicles will be offered at special home show prices.

Exhibitors at the Home & Leisure Living Show will be offering exciting new products and services. Many will have special drawings for prizes which range from merchandise to services. Admission is free.

Show hours are 3 to 9 p.m. on Friday, 9 a.m. to 9 p.m. on Saturday and 9 a.m. to 6 p.m. on Sunday. The Track & Tennis Building is located at State and Hoover in Ann Arbor.

**LIMA TOWNSHIP BOARD OF REVIEW**

NOTICE IS HEREBY GIVEN to all persons liable to assessment for taxes in

**LIMA TOWNSHIP**  
that the Board of Review will meet at the  
**LIMA TOWNSHIP HALL**  
11452 Jackson Road, Chelsea, Michigan

to hear appeals to the Assessment Roll on

**MONDAY, MARCH 10, 1986**

9 a.m. to 12 noon and 1 p.m. to 3 p.m.

**TUESDAY, MARCH 11, 1986**

9 a.m. to 12 noon; 1 p.m. to 3 p.m., & 5 p.m. to 8 p.m.

at which time, upon request of any person, or his or her agent, who is assessed on this tax roll and if sufficient cause is shown, the Board of Review will correct the assessment on the property in question in a manner that will, in their judgment, make the valuation relatively just and equal. The assessment tax roll, after being reviewed and approved by the Board of Review, will be the assessment roll of LIMA TOWNSHIP for the 1986.

The County Board of Commissioners of Washtenaw County has proposed the following starting ratios for the year 1986: Agriculture, 57.19, Factor .8743; Commercial, 50.07, Factor 50.07; Industrial, 48.76, Factor 1.0255; Residential, 49.11, Factor 1.0182; Developmental, 50.00, Factor 1.0000.

**LEILA C. BAUER, Supervisor**

Dated: Feb. 24, 1986

**Frosh . . .**

(Continued from page ten)

day at East Lansing. Leading 12 to 8 at the end of one quarter, the freshmen fell behind, 29 to 22 at the half. A full court press and some very good shooting helped East Lansing increase the lead. The Bulldogs staged a rally by pulling within nine at one point after trailing by 20, but could pull no closer.

"I talked to their coach after the game and found out that their 'B' team had lost only one game all year," said coach Quilter. "Their coach praised our squad for not giving up and was genuinely surprised that we out-rebounded them because they were quite a bit taller than us."

Leading scorer for Chelsea in his best game of the year was point guard Larry Nix with 28 points. Jeff Marshall had 14, Dave White, Dave Adams and Loren Keezer two each, and Mike Kushmaul one. Leading rebounder with 10 was Jeff Marshall with John Collins getting five.

The freshmen lost their final game of the season Thursday at Pinckney by a 41 to 32 score.

For the second game in succession, the freshmen had a lead at the end of the first quarter. Leading by a 6 to 4 score the Bulldogs dominated the boards by a 10-2 margin. By the half Pinckney had pulled to a 19-point advantage. The Bulldogs closed the margin to 25 to 20 entering the last stanza. With only seven players and two fouling out, the Bulldogs just couldn't pull out a victory in their last game.

"We were without John Collins and the kids had to overcome three games in four days and some questionable officiating," said coach Quilter.

Leading scorer for the Bulldogs was reserve Mike Kushmaul who scored nine points. Jeff Marshall had eight, Larry Nix seven, Loren Keezer four and Dave Adams and Dave White two each.

The freshman record for the year stood at 5 wins against 13 losses. Coach Dave Quilter thought that with "just a few different bounces four more victories could have come the Bulldogs' way. We hurt ourselves most of the season with turnovers and poor shooting percentage. On the positive side we out-rebounded 12 to 13 opponents and displayed hustle and enthusiasm the entire season, never quitting," noted Quilter.

In many developed countries, a person can easily use 150 gallons of water each day. Yet in many African countries, daily use can be close to two to five quarts per person, says International Wildlife magazine.

**OLD ORCHARD FURNITURE REFINISHING**

Stripping - Refinishing  
Repairs - Antique Restoration  
Experienced - Professional

Pick-up & Delivery available  
Ph. (517) 851-8713

513 Old Orchard Ln.  
Stockbridge

**Weed Killer Questions**

(Continued from page nine)

William Krauss, that the material will not drift downstream into Little Portage of Big Portage Lakes—however, we feel that information is not correct."

Continuing, he explained, "We don't feel 2-4D decomposes as rapidly as the manufacturer claims. Trying to detect 2-4D in a river several miles downstream from a 1,200-acre reservoir in which 2-4D was dumped through the use of grab samples assumes the person taking the samples knew, or was able to predict, when the 2-4D was passing that point."

Braun said the PBLOA group specifically seeks some type of monitoring to be required by DNR officials (downstream from Hi-Land Lake) to detect drift of the 2-4D which PBLOA membership feels will occur.

"At this point, we are more interested in knowing whether the 2-4D is coming down the river (Portage River), rather than the exact amounts (of the chemical)," noted Braun in his letter to Wandell. His group sug-

gested specific methods of testing, and said the PBLOA agreed strongly with the Huron River Watershed Council that lake herbicide application permits should not be granted unless the application is accompanied by a long-term plan to address the sources of nutrients causing the problem.

Of concern to residents of the other lakes is the possible danger to boats and particularly, to swimmers.

Apparently, the matter is of ongoing concern to both residents of the Hi-Land Lake area and those of Portage and Base Lakes.

Additional information will be presented by The Chelsea Standard as it is received from all parties involved in the situation.

Dexter township board adopted a resolution at its Feb. 18 meeting requesting the DNR's Inland Lakes Management Unit to deny the herbicide application permit for Hi-Land Lake during 1986 and in the years that follow.

Subscribe to  
The Chelsea Standard!

**Chelsea Welding, Inc.**

PORTABLE WELDING

**475-2121** Farm Machine Repairs  
Truck Bumpers  
Custom Hitches  
HELI-ARC

1190 Pierce Rd., Chelsea  
8:30 a.m. - 8:12 Sat.

**BOATS & RV's**  
FREE ADMISSION



at the  
**HOME & LEISURE LIVING SHOW**  
FREE ADMISSION

**MARCH 7-9, 1986**

in the UM Track & Tennis Building  
on State Street and Hoover Street

SHOW TIMES: Fri. 3-9 p.m.; Sat. 10 a.m. - 9 p.m.; Sun. 10 a.m. - 6 p.m.

**SPECIALS**

Feb. 26 thru March 12, 1986

ALL PEPSI PRODUCTS

Pepsi, Pepsi Free, Diet Pepsi, Diet Pepsi Free  
Mountain Dew, Slice, Diet Slice,  
Vernors, Sugar Free Vernors  
A & W Root Beer, Sugar Free A & W Root Beer

8 1/2 liter bottles **\$1.89** plus deposit

**SEYFERT'S TOSTADOS**

3/4-lb. bag  
Reg. \$1.79 **\$1.39** SAVE 40¢  
SALE



**CHELSEA 76 GAS & CONVENIENCE STORE**

501 S. Main

Ph. 475-9510

PAGE  
DEADLINE:  
NOON,  
SATURDAY  
Phone  
475-1371

# PUT IT IN THE WANT ADS FOR RESULTS

Just  
Phone  
475-1371

## Automotive

## Grohs Chevy

"Ride With A Winner!"  
7120 Dexter-Ann Arbor Rd.  
No. 1 Dealer  
In Customer Satisfaction!

1986 SPRINT  
3 to choose from.  
1985 MONTE CARLO SS  
1983 CAVALIER  
Hatchback  
1983 CELEBRITY 2-dr.  
1982 LYNX 2-dr.  
4-speed, \$1,995  
1982 CAMARO  
V-6, auto., loaded.  
1981 CHEVETTE  
4-dr., automatic.  
1980 MALIBU CLASSIC Wagon

Come by and see our  
THRIFT LOT of Cars  
& Trucks under \$2,500

## TRUCKS

1984 S-10  
Buckets, V-6, stick.  
1983 S-10 EXT. CAB  
4-cyl., auto.  
1982 S-10 Pick-up  
4-cyl., 4-speed.  
1980 GMC 1/2-ton, Automatic.  
1980 FORD 4x4  
With plow.  
1979 FORD F-250 4x4  
Auto.  
1978 CHEVY work van.  
1977 FORD VAN  
1976 FORD VAN  
1970 GMC Flatbed  
With hoist.

## DEXTER - 426-4677

Open daily til 6 p.m.  
Mon. & Wed. til 8 p.m.  
Saturdays until 1 p.m.

ELECT Charles Ritter for  
Chelsea Village President. (Pol.  
Adv. paid for by Committee To Elect  
Charles Ritter, Charles Ritter, chair-  
man.) -x40-3

LET US SELL YOUR CAR! — We can  
save you the trouble of selling your  
car. Call Don Toppenger at Wash-  
tenaw County Auto Finders. (Palmer  
Motor Sales) 475-3650. -x40-

TIRES — Four 7.50x16 mud and snow  
tires and tubes, \$60. Ph. 475-1505.  
-x40-

1964 DODGE CORONET — Automatic,  
318, 2-door hardtop. Runs OK.  
\$500. Ph. 475-9705. -x40-

1983 HONDA 200-S ATC — Good  
condition, trailer hitch, \$850. Call  
475-8183. -x40-

1977 DODGE VAN B-100 Sportsman.  
318 4-speed. 69,000 miles. \$1,000.  
Ph. 475-8854. -x40-

79 OMNI — 1.7 engine, 4-spd.,  
4-door, p.s. Rust-proofed, ex-  
cellent condition, \$2,000. 475-7163.  
-x40-

82 LYNX with new 85 1.6L H.O.  
engine, sun roof, cruise, stereo.  
\$2,950. Ph. 426-4977. -x40-2

STEEL WHEEL RIMS — 4 for \$30.  
Call 663-8228 after 5 p.m. -x30H

G.M. 12-volt differential \$75. Call  
663-8228 after 5 p.m. -x30H

## BODY SHOP

COMPLETE FULL TIME  
Estimates Available

## PALMER FORD

222 S. Main 475-1301

## Farm &amp; Garden

FORD 9N TRACTOR, good condition.  
Ph. 426-4955. -x41-2

FARM TRACTORS for sale. Used,  
small. Ph. 475-8141 or 475-8726.  
-x27H

## Recreation Equip.

BOATS — Boss-Tracker II. Excellent  
condition. 40 Merc. Less than 80  
hours on motor. 426-4905. -x41-2

## For Sale

FIREWOOD — Quality seasoned  
hardwood also greenwood. Ph.  
475-1252 or 475-2116. -x42-3

## SOFTWARE

COMMODORE 64/128

Now available in Chelsea

Hundreds of titles available, most in  
stock. In-home demonstrations/  
lessons.

Price List Available at  
Schneider's Grocery  
or call Jason

475-2891

FOR SALE — Davenport and match-  
ing chair, very nice, \$150. Round  
dining room table, extra leaf, with  
formica top on solid oak pedestal  
base, w/3 chairs, \$125. real good  
condition. Reasonable offers con-  
sidered. Call 475-3420. -x40-

VIKING SEWING MACHINE — Free-  
arm zig-zag, late model, built-in  
decorative stitches, buttonholes, etc.  
Only \$164.50, trades accepted.  
Guaranteed. Ph. Jackson (517)  
784-8016, 9 a.m. to 7 p.m. -x45-4

SPINET PIANO, good condition, Story  
& Clark. Ph. 475-8996. -x40-

ZENITH color TV console. Good  
condition, \$50. Ph. 475-2309. -x40-

SOFA AND CHAIR — Multi color  
teak frame, \$200. Ph. 475-8854. -x40-

FIREWOOD — Seasoned hardwood,  
cut and split, facecord, \$35 picked  
up, \$45 delivered (2-cord minimum).  
Also green oak cut, split, delivered  
for \$35 (5-cord minimum) custom  
lengths. (517) 522-4982. -x41-1

FARM-FRESH large white eggs. Will  
deliver in Chelsea. 475-7882. -x40-2

RELIABLE HARDWOODS — Seasoned  
firewood. Ph. 475-1505. -x40-

SNOW THROWER, 8 h.p., 2 stage,  
26" excellent condition. Call  
475-8377. -x40-2

DINETTE TABLE — Grey Formica and  
4 chairs, \$50. Call 663-8228 after 5.  
-x30H

FM STEREO-TUNER for any 8-track  
player, \$15. Audiotape tape deck  
lock mount, never used, \$10. Cor-  
radio, Delco AM-8 track-player, \$25.  
Call 663-8228 after 5 p.m. -x30H

G.M. 12-volt differential \$75. Call  
663-8228 after 5 p.m. -x30H

## FIREWOOD

## SPRING SPECIAL

Mixed hard and seasoned.  
cut and split.

16" to 18" wood

2 cord minimum, \$40 picked up  
or will deliver.

ALSO, GREEN WOOD for next year. 5  
cord loads, 16x18 inch wood, \$35 per  
cord, delivered.

## KLINK EXCAVATING

475-7631

## DRILL PRESS — Shop Smith, works

good. Ph. 463-1271. -x27H

## COIN OPERATED

## PINBALL &amp; VIDEO

FOR HOME USE.

Call

662-1771

## Garage Sales

MOVING SALE — Sofa and chair,  
\$75; chest freezer, \$75; file  
cabinet, \$20; weight bench, \$25; rug  
shampooer, \$15; saw horses, 2  
lamps; 2 Daisy air rifles; lawn boy  
lawnmower. Call 475-1797 after 6 p.m.  
or week-ends. -x40-2

TEMPLE BETH ISRAEL (Corner W.  
Mich. Ave and West. Ave.,  
Jackson). Rummage Sale: Tues.,  
March 11, 10 a.m. to 9 p.m.; Wed.,  
March 12, 10 a.m. to 4 p.m. Please do  
not block driveways on S. Grinnell. -x40-

## Real Estate

## Real Estate One

995-1616

For more information DAYS or EVENINGS  
Contact

## Nelly Cobb, REALTOR

475-7236

MANCHESTER — 10-acre mini-farm.  
Brick home, hip roof barn plus pole  
barn, plus 3-car garage. \$50,000.

SUGAR LOAF LAKE access. Charming  
2-bedroom starter home with stone  
fireplace. Full basement. All  
mechanics new. 4 lots. \$48,900.

LAKE FRONT — Desirable  
3-bedroom, 1 1/2 bath on Spring Lake,  
large deck overlooking water in-  
cludes picnic table and boat. Ex-  
cellent 1-94 access. \$58,500.

75-ACRE FARM with 3-bedroom brick  
home, 7 outbuildings, great location  
on M-52 in Manchester Twp. \$139,900.

79 ACRES with pole barn and house  
on corner of M-52 and Pleasant Lk.  
Rd. Great location with commercial  
possibilities. \$139,900.

"PERFECT HOME for large family" —  
4-bedrooms, living room with  
fireplace, formal dining room, lg.  
enclosed sunporch, 1 1/2 baths, full  
basement, 2-car garage on 1-acre  
hilltop site inside village limits.  
\$69,900.

VERY NICE 3-bedroom, 2 1/2-bath  
ranch — Fireplace, family room with  
bar, lg. deck, 2-car attached garage  
in area of nice homes. \$78,500.

DRIVE A LITTLE — Save a lot! 10  
acres near Grass Lake (great place  
for a horse!) 3-bedroom quadlevel  
with family room ready for finishing,  
woodburner for low heating bills,  
\$62,500. Call Jim Szumko 971-6070,  
eves. 995-5335.

SPECIAL AND UNIQUE HOME at  
Sugar Loaf Lake. Sunken marble tub,  
great stone fireplace. Backs to state  
land with nice view of the lake.  
\$63,500. Call Terri Bergman  
971-6070, eves. 878-3282.

TWO ACRES of hardwoods, high on a  
hill! 5 bedrooms, 3 fireplaces, bay  
window! Skylight with stained glass  
window. Many extras. 30 mins. to  
Ann Arbor. \$105,000. Call Terri  
Bergman 971-6070, eves. 878-3282.

CHELSEA 3-bedroom raised ranch  
with 1 1/2 baths, 2 1/2-car garage,  
cathedral ceilings and a breathtaking  
view. Located on 2.7 acres with many  
custom features. \$117,000. Call  
Marilyn Parkinson 994-0400, eves.  
995-0072.

LARGE 4-BEDROOM, 2 1/2-bath home  
in beautiful setting 5 miles from I-94.  
Open and airy, great for entertaining.  
Super insulated. Priced to sell.  
Chelsea. \$129,900. Call John Hietje  
665-0000, eves. 517-548-4055.

QUALITY! VIEW! ENERGY SAVINGS!  
This house has it all. 3 bedrooms,  
2 baths, 2 decks, beautiful kitchen.  
Passive solar, 10 acres, barn and  
sheds. \$179,500. Call Eunice Burns  
994-0400, eves. 663-3763.

CHARLES  
REINHART  
Co. Realtors

WANTED TO BUY in village, single-  
family house. Low thimes to low  
forties. From owner. Call 475-7714  
after 1 p.m. -x42-4

McKINLEY ROAD — 11.5 acres,  
\$25,000. Borders to state land.  
Chelsea schools. Ideal solar home  
site. Terms available. Call 434-0992  
after 5 p.m. -x40-2

Full time April 15. Part-time for  
training immediately. Cabinet shop  
experience preferred.

Require dependable individual who  
can learn new skills efficiently.  
Salary based on experience.

Call 475-8751

WOODWORKER NEEDED

Local company is now taking applica-  
tions for a specialty display and adver-  
tising dept. Must be neat and  
dependable. No experience  
necessary—company training. Ad-  
vancement opportunity for qualified  
individuals. \$1,100/mo. guaranteed.  
Interviews by appointment only, call  
between 2-5 p.m.

996-8400

ATTENTION

Local company is now taking applica-  
tions for a specialty display and adver-  
tising dept. Must be neat and  
dependable. No experience  
necessary—company training. Ad-  
vancement opportunity for qualified  
individuals. \$1,100/mo. guaranteed.  
Interviews by appointment only, call  
between 2-5 p.m.

996-8400

WOODWORKER NEEDED

Local company is now taking applica-  
tions for a specialty display and adver-  
tising dept. Must be neat and  
dependable. No experience  
necessary—company training. Ad-  
vancement opportunity for qualified  
individuals. \$1,100/mo. guaranteed.  
Interviews by appointment only, call  
between 2-5 p.m.

996-8400

ATTENTION

Local company is now taking applica-  
tions for a specialty display and adver-  
tising dept. Must be neat and  
dependable. No experience  
necessary—company training. Ad-  
vancement opportunity for qualified  
individuals. \$1,100/mo. guaranteed.  
Interviews by appointment only, call  
between 2-5 p.m.

## Real Estate

MUST SELL — 2-acre estate, owner  
transferred. Country living but  
close to town. Beautiful setting  
3-bedrooms, 2 full baths, 2-car  
garage plus workshop, barn for  
horses. 25 mins. from Ann Arbor.  
Price: mid 80's, negotiable terms.  
(517) 522-5280. -x0-2

MID-LEVEL EXEC.  
at Major Chelsea Business  
Seeking home  
in Chelsea School District.

Minimum requirements: 3-bed-  
rooms, full basement, 2-baths,  
family-room, 2-car garage. Please  
submit info. to: P.O. Box 563,  
Chelsea, MI Principals only. -x1-4

ELECT Charles Ritter for  
Chelsea Village President. (Pol.  
Adv. paid for by Committee To Elect  
Charles Ritter, Charles Ritter, chair-  
man.) -x40-3

## Animals &amp; Pets

## HORSESHOEING

Douglas Eidenier  
19 years' experience. Corrective  
work. Hot or cold. Special price on 5  
or more.

Ph. 1-(517) 448-8231 -x41-2

DOG with own doghouse free  
to home of kind owners. Young,  
spayed female, Lab mix, black with  
white paws. Ph. 1-(517) 522-8920.  
-x39H

TAN COLOR PUPPY — Free to good  
home. Ph. 428-7756. -x39H

DOG FREE to a good home. Young,  
spayed female Labrador mix. Has  
excellent disposition. Free with  
doghouse. Must find good homes  
owners are moving. Ph. 1-(517)  
522-8920. -x39H

PUPPY — Free to a good home.  
Black with brown markings.  
Labrador mix. Ph. 428-7756. -x39H

PUPPIES — Part Labrador, 3 months  
old. Loving, loyal companions, free  
to good home. Ph. 428-7756. -x40-4

PUPPY FREE to a good home.  
son allergic. 14 weeks, small,  
medium size. Ph. 475-3207. -x40-

SPAY/NEUTER CLINIC of the Huron  
Valley Humane Society, Ph. (313)  
662-4365, 10 a.m. to 4 p.m. -x1H

Lost & Found

REWARD — Lost, black, female Lab.  
Cedar Lake, Cavanaugh Lake area.  
Loved pet. Please return. No ques-  
tions asked. Reward, 475-1192. -x40-2

FOR LOST OR FOUND PETS —  
Phone The Humane Society of  
Huron Valley at 662-5585 between 11  
a.m. and 5 p.m. Sunday through  
Saturday, closed holidays, 3100  
Cherry Hill Rd., Ann Arbor. -x39H

Call 475-8751

WOODWORKER NEEDED

Local company is now taking applica-  
tions for a specialty display and adver-  
tising dept. Must be neat and  
dependable. No experience  
necessary—company training. Ad-  
vancement opportunity for qualified  
individuals. \$1,100/mo. guaranteed.  
Interviews by appointment only, call  
between 2-5 p.m.

996-8400

ATTENTION

Local company is now taking applica-  
tions for a specialty display and adver-  
tising dept. Must be neat and  
dependable. No experience  
necessary—company training. Ad-  
vancement opportunity for qualified  
individuals. \$1,100/mo. guaranteed.  
Interviews by appointment only, call  
between 2-5 p.m.

996-8400

WOODWORKER NEEDED

Local company is now taking applica-  
tions for a specialty display and adver-  
tising dept. Must be neat and  
dependable. No experience  
necessary—company training. Ad-  
vancement opportunity for qualified  
individuals. \$1,100/mo. guaranteed.  
Interviews by appointment only, call  
between 2-5 p.m.

996-8400

ATTENTION

Local company is now taking applica-  
tions for a specialty display and adver-  
tising dept. Must be neat and  
dependable. No experience  
necessary—company training. Ad-  
vancement opportunity for qualified  
individuals. \$1,100/mo. guaranteed.  
Interviews by appointment only, call  
between 2-5 p.m.

996-8400

ATTENTION

Local company is now taking applica-  
tions for a specialty display and adver-  
tising dept. Must be neat and  
dependable. No experience  
necessary—company training. Ad-  
vancement opportunity for qualified  
individuals. \$1,100/mo. guaranteed.  
Interviews by appointment only, call  
between 2-5 p.m.

996-8400

## Help Wanted

PART-TIME counter-help, evenings  
and week-ends. Must be neat and  
dependable. Apply in person at  
Video Choice, Inc., 899 S. Main,  
Chelsea. -x1-3

Jackson Citizen Patriot  
Carrier Needed  
for Village of Chelsea

Distributor needed for newspaper  
routes in Chelsea Village and  
newstands. -x0-2

POSITION AVAILABLE for depend-  
able, thorough and efficient per-  
son to clean my house in the North  
Lake area. References required,  
\$5/hr. Call 475-9365 evenings. -x1-4

BUS MECHANIC HELPER — Part-time.  
Anyone interested, please apply to  
Dexter schools business office, in  
Dexter High, 2615 Baker Rd., Dexter.  
-x41-2

If you love kids  
... and baseball ...

Then we need you!  
The Chelsea Recreation Dept. is now  
interviewing for directors in the Little  
and Pony Leagues. If interested call  
475-9830 9 a.m.-12 noon. -x40-2

Patient Co-Ordinator  
for  
Chiropractic Practice  
in Chelsea Area

We need a caring enthusiastic per-  
sonable addition to our staff. If you  
would like to help our patients with  
their scheduling and daily problems  
we would like to meet you.

Write today  
ATKINSON  
CHIROPRACTIC CLINIC

7970 CLARK LAKE ROAD  
CHELSEA, MICH. 48118  
and tell of your experience  
or call 475-8669 -x1-3

SECURITY OFFICER  
PART-TIME POSITION

20 hours per week. Should be  
available for additional hours.

Rate of pay: \$4.75 per hour.  
Call PINKERTON'S, Inc.  
(313) 569-1004 for more information.  
Equal Opportunity Employer. -x40-

Work Wanted

HOUSECLEANING — Call Shelia,  
428-9328. -x40-4

ELECT Charles Ritter for  
Chelsea Village President. (Pol.  
Adv. paid for by Committee To Elect  
Charles Ritter, Charles Ritter, chair-  
man.) -x40-3

Child Care

NEED A SITTER? I will babysit  
in my Cavanaugh Lake home for  
one pre-school age child. Interested,  
call 475-3320. -x41-2

WANTED — Loving babysitter for  
delightful 2-year-old girl. Prefer in  
our home in Half Moon/North Lake  
area, with light housekeeping. Will  
consider in your home if in Chelsea,  
Gregory or Dexter-area. Call be-  
tween 11 a.m.-8 p.m. at (313)  
229-7560. -x41-2

CHILD CARE — Licensed home.  
Dexter/Chelsea area, 2 years and  
up, full- or part-time. Ph. 475-8821.  
-x40-

RESPONSIBLE CHILD CARE needed  
for 2 school age children on week  
nights, 11 p.m. to 8 a.m. in my home,  
North Lake area, Call 475-1539. -x41-2

## CLASSIFIED ADVERTISING

## CASH RATES:

10 words or less...\$1.00  
7¢ per word over 10  
when paid before Sat., 12 noon

CHARGE RATES:  
Add \$2 per insertion if  
charged. Add \$10 if not  
paid within 10 days follow-  
ing statement date.

THANK YOU/MEMORIAM  
CASH RATES:  
50 words or less...\$2.50  
7¢ per word over 50  
when paid before Sat., 12 noon

CHARGE RATES:  
Add \$2 per insertion if  
charged. Add \$10 if not  
paid within 10 days follow-  
ing statement date.

DEADLINE (classified section)  
Saturday, 12 noon.  
DEADLINE (late ad section)  
Monday, 12 noon.

All advertisers should check their  
ad the first week. The Standard  
cannot accept responsibility for  
errors on ads received by tele-  
phone but will make every effort  
to make them appear correctly.  
Refunds may be made only when  
erroneous ad is cancelled after  
the first week that it appears.

## Classifications

Automotive.....1

Motorcycles.....10

Farm & Garden.....2



# LITTLE WANT ADS. BIG PRIZES FOR BIG RESULTS!

Washtenaw County's Busy Marketplace . . . Quick, Economical Results . . . Give 'em a try!

## Misc. Notices 12

I WILL NOT be responsible for any debts other than my own. Ted R. Newcome. -40

CROSS WITH CHRIS! June 20 Germany, Austria, Switzerland, July 5 England, Ireland, Scotland, July 21 Denmark, Sweden, Norway, August 4 France, Switzerland, Price: From \$1,669. Includes flight 2 meals daily, 1st class hotels. (517) 453-2202, 7369 Berne Rd., Piquette, MI 48755. -41-8

## Bus. Services 14

### General

PROFESSIONAL FORESTRY — Management and marketing services for timber and firewood. Forest management plans. Urban forestry services. Christmas tree management. Tree planting. BPA Forestry Consultants. Brian McKentzie, Forester, 475-2486, (517) 784-3847. -42-4

Chelsea Furniture Restorations

"Ken's Kover Up"

UPHOLSTERY — REPAIRS — REFINISHING — ANTIQUES — MODERN — Upholster pieces made to order. All work guaranteed. Free estimate. 475-8975. -40

Waterloo Glass Co.

Mobile Glass Repair Auto/Residential/Commercial Licensed - Insured 475-7773 -43-7

ADULT FOSTER CARE HOME

has openings for males and females, with private rooms. (517) 851-8548 -41-8

INCOME TAX PREPARATION

and

Monthly Bookkeeping SERVICE

Since 1953

By Appointment

CHELSEA ACCOUNTING & TAX SERVICE

Now in Ann Arbor 769-0931 -45-12

We Offer Sales & Service

RCA - Zenith - Philco - Quasar - Sony 8 & W and Color TVs

Wingard - Cobra CB Radios Master Antenna Specialists

Antenna Rotor Insurance Job Commercial, Residential

Paging Intercom Systems

Hoover Vacuum Dealers and Service Specialists

Keys by Curtis

To service other leading brands Senior Citizens 10% Discount.

JOY'S TV CENTER

512 N. Maple Rd., Ann Arbor 769-0198

Master Charge, Visa Welcome 3711

PIANO TUNING and repair. Qualified technician. Call Ron Harris, 755-7134. -4211

If You Need Work Come to Kelly Services

We'll Keep You Busy!

• Work for the Best Companies

• Earn Top Pay

• Merit Raises

• Vacation Pay

• IMMEDIATE OPENINGS

For the Following Experienced Clerical Skills:

• Word Processing Operators

• Secretaries

• Typists

• Switchboard Operators

• Data Entry Operators

• Accounting Clerks

• 10 Key-Calculator General Clerk

Call for Appointment

Between 9 a.m. - 3 p.m., M-F

KELLY SERVICES

Williamsburg Square II

475 Market Place, Suite F

Ann Arbor, Michigan 48104

Telephone (313) 761-5700

101 Not an agency - Never a fee M/F/N

IMMEDIATE OPENINGS

for temporary light industrial workers day and evening shifts in Chelsea, Dexter and Ann Arbor areas.

Call

KELLY SERVICES

761-5700

for appointment

## Bus. Services 14

### Carpentry/Construction

ROOFING, SIDING, remodeling. Kitchens. Jim Hughes. 475-2079 or 475-2582. -x39-11

DAVE'S SIDING & ROOFING

Aluminum and vinyl siding. Custom trim and gutters. 1-(517)-851-7746. -x81f

R. L. BAUER Builders

LICENSED AND INSURED Custom Building

Houses - Garages - Pole Barns Roofing - Siding - Concrete Work

FREE ESTIMATES

Call 475-1218

RON MONTANGE CONSTRUCTION

Full carpentry services (rough and finish)

Additions, remodeling and repairs

Replacement Windows

Concrete

Roofing and siding

Cabinets and Formica work

Excavating and Trenching

QUALITY WORKMANSHIP

FREE ESTIMATES

475-1080

LICENSED

John Kerr, Builder

LICENSED & INSURED

Roofs - Decks - Additions

Wood Fencing

Finished Carpentry

Phone 426-2174

Excavating

SAND GRAVEL

KLINK EXCAVATING

Bulldozer - Backhoe

Road Work - Basements

Trucking - Crane Work

Top Soil - Demolition

Drainfield - Septic Tank

Trenching, 5' up

Industrial, Residential, Commercial

CALL 475-7631

LITTLE WACK EXCAVATING

Licensed & Insured. Basements, Drainfields, Digging, Bulldozing, Trenching, Black Dirt, Sand, Gravel.

Paul Wackenhut, (313) 528-5025. 231f

Repairs/Improvements

FOSTER'S

SMALL ENGINE REPAIR

BBS, Tech., Kohler, parts stocked.

Repair all makes lawnmowers, chainsaws, rototillers, snow throwers.

Blades sharpened. Reasonable rates. Ph. 475-2623. -39-121f

COMPLETE SMALL ENGINE SERVICE

Lawn mowers, tillers, garden tractors, chain saws, and snow blowers. Chains sharpened. Chelsea Hardware Garden & Shop, 475-1121. -161f

Window Screens

Repaired

Reasonable rates

Chelsea Hardware

1105 S. Main Ph. 475-1121

ELECT Charles Ritter for Chelsea Village President. (Pol. Adv. paid for by Committee to Elect Charles Ritter. Charles Ritter, chairman.) -40-3

STEEL

NEW & USED STEEL AT BARGAIN PRICES

• STRUCTURALS • PLATE

• RE-ROD

• PIPE • SQUARE TUBING

Jackson Fibers Co.

(517) 784-9191

1417 So. Elm St.

1 block north of High St.

Jackson, Michigan

## Bus. Opportunity 16

OWN YOUR OWN Jean-Sportswear, Ladies Apparel, children's, large size, petite, combination store, maternity, dancewear, accessories.

Jordache, Chic, Lee, Levi, Izod, Givoni, Tommy, Calvin Klein, Sergio Valente, Evan Picone, Liz Claiborne, Members Only, Gasolina, Healthier, over 1,000 others. \$13,300 to \$24,900 inventory, training, fixtures, grand opening, etc. Can open 15 days. Mr. Loughlin (612) 888-6555. -40-3

ELECT Charles Ritter for Chelsea Village President. (Pol. Adv. paid for by Committee to Elect Charles Ritter. Charles Ritter, chairman.) -40-3

Card of Thanks

THANK YOU

I wish to thank my family and friends for the lovely flowers, cards and phone calls received during my stay in the hospital and since my return home. All were greatly appreciated.

Millie Jarvis Kalamazoo, Mich.

THANK YOU

I wish to thank my family and friends for the flowers, cards and visits while I was in the hospital and since my return home. A special thanks to Fr. Dupuis, our deacon Richard Cesarz, Dr. Krause and all the nurses who cared for me. Your kindness will always be remembered.

Mary Kniss.

CARD OF THANKS

Thank you! To the Good Samaritan who plowed the snow from my driveway the week of Feb. 10.

Kathleen Chapman.

CARD OF THANKS

A special thanks to our friend, Tone, for all the things he has done for us. With love, from your Three Ladies.

Legal Notice

NOTICE OF MORTGAGE FORECLOSURE SALE

Default having been made in the conditions of a mortgage made by ROBERT L. GORDON, of 19673 Goulburn, Michigan, to MORTGAGEE, dated November 22, 1978, and recorded on November 22, 1978, in Liber 184, on page 13, of the County of Washtenaw, Michigan, and now held through mesne assignments by Industrial National Bank of Rhode Island, a Rhode Island corporation, by an assignment dated May 6, 1982, and recorded on July 1, 1982, in Liber 184, on page 13, of the County of Washtenaw, Michigan, on which mortgage there is claimed to be due the sum of Twenty Two Thousand Two Hundred Forty Two and 69/100 Dollars (\$22,242.69), including interest at 8.75% per annum.

Under the power of sale contained in said mortgage and the statute in such case made and provided, notice is hereby given that said mortgage will be foreclosed by a sale of the mortgaged premises, or some part of them, at public venue, at the west entrance to the County Building in Ann Arbor, Michigan, at 10 o'clock A.M., Local Time, on Thursday, March 20, 1986.

Said premises are situated in the Township of Ypsilanti, Washtenaw County, Michigan, and are described as:

Lot 14, TURTLE CREEK SUBDIVISION, NO. 2, a part of the NE 1/4 of Section 14, T3S, R7E, Ypsilanti Township, Washtenaw County, Michigan, according to the plat thereof as recorded in Liber 18 of Plats, Pages 41 and 42, of Washtenaw County Records.

During the six months immediately following the sale, the property may be redeemed.

Fleet Mortgage Corp., Assignee of Mortgagee, HECHT & CHENEY, Sixth Floor Frey Building, Grand Rapids, Michigan 49503

Feb 5-12-19-26-March 5

MORTGAGE SALE—Default having been made in the conditions of a mortgage made by JERRY W. BAKER, a single man, to Liberty Mortgage Corporation, a Michigan corporation, dated November 22, 1978, and recorded on November 22, 1978, in Liber 184, on page 404, of the County of Washtenaw, Michigan, and now held through mesne assignments by Industrial National Bank of Rhode Island, a Rhode Island corporation, by an assignment dated May 6, 1982, and recorded on July 1, 1982, in Liber 184, on page 13, of the County of Washtenaw, Michigan, on which mortgage there is claimed to be due the sum of Twenty Two Thousand Two Hundred Forty Two and 69/100 Dollars (\$22,242.69), including interest at 8.75% per annum.

Under the power of sale contained in said mortgage and the statute in such case made and provided, notice is hereby given that said mortgage will be foreclosed by a sale of the mortgaged premises, or some part of them, at public venue, at the west entrance to the County Building in Ann Arbor, Michigan, at 10 o'clock A.M., Local Time, on Thursday, March 20, 1986.

Said premises are situated in the Township of Ypsilanti, Washtenaw County, Michigan, and are described as:

Lot 763, Westwillow Unit No. 10, a subdivision of part of Section 14, T3S, R7E, Ypsilanti Township, Washtenaw County, Michigan, according to the plat thereof as recorded in Liber 14 of Plats, Pages 46 & 47, of Washtenaw County Records.

During the six months immediately following the sale, the property may be redeemed.

Dated: February 3, 1986.

Fleet National Bank, Assignee of Mortgagee, HECHT & CHENEY, Sixth Floor Frey Building, Grand Rapids, Michigan 49503

Feb 5-12-19-26-March 5

MORTGAGE SALE—Default having been made in the conditions of a certain mortgage made by ROBERT FRANK HALE and SANDRA C. HALE, husband and wife, to Ann Arbor Mortgage Corporation, a Michigan corporation, dated July 7, 1975, and recorded in the office of the Register of Deeds for the County of Washtenaw, Michigan, on July 23, 1975, in Liber 1518, on page 88, of Washtenaw County Records, which said mortgage was thereafter assigned to Ann Arbor Mortgage Corporation, a Michigan corporation, by assignment dated September 17, 1975, and recorded in the office of the Register of Deeds for the County of Washtenaw, Michigan, on September 20, 1975, in Liber 1518, on page 88, of Washtenaw County Records, which said mortgage was thereafter assigned to Wayne Federal Savings and Loan Association, a savings bank, by assignment dated September 30, 1975, in the office of the Register of Deeds for the County of Washtenaw, Michigan, on October 1, 1975, in Liber 1518, on page 88, of Washtenaw County Records, on which mortgage there is claimed to be due, at the date of this notice, for principal and interest, the sum of Three Hundred Fifty-Five and 59/100 Dollars (\$355.59).

And no suit or proceedings at law or in equity have been instituted to recover the debt secured by said mortgage or any part thereof. Now, therefore, by virtue of the power of sale contained in said mortgage and pursuant to the statute of the State of Michigan in such case made and provided, notice is hereby given that on Thursday, April 3, 1986, at ten o'clock A.M., local time, said mortgage will be foreclosed by a sale at public auction, to the highest bidder, at the west entrance to the County of Washtenaw County Building in the City of Ann Arbor, Washtenaw County, Michigan (that being the building where the Circuit Court for the County of Washtenaw is held), of the premises described in said mortgage, or so much thereof as may be necessary to pay the amount due, as aforesaid, on said mortgage, with the interest thereon at Ten percent (10.00%) per annum and all legal costs, charges and expenses, including the attorney fees allowed by law, and also any sum or sums which may be paid by the undersigned, necessary to protect its interest in the premises, which said premises are described as follows:

All that certain piece or parcel of land situate in the Township of Ypsilanti in the County of Washtenaw, and State of Michigan, and described as follows:

Lot 300, TURTLE CREEK SUBDIVISION, NO. 2, a part of the Northeast one-quarter of Section 14, Town 3 South, Range 7 East, Ypsilanti Township, Washtenaw County, Michigan, according to the plat thereof as recorded in Liber 19 of Plats, Pages 41 and 42, of Washtenaw County Records.

During the six months immediately following the sale, the property may be redeemed.

Dated at Troy, Michigan, January 2, 1986.

STANDARD FEDERAL BANK, a savings bank

Assignee of Mortgagee, RONALD J. PALMER, Attorney for Assignee of Mortgagee, 2401 West Big Beaver Road, Troy, Michigan 48064

Feb 19-26-Mar 5-12-19

MORTGAGE SALE—Default having been made in the conditions of a certain mortgage made by NEAL A. HANN and DENISE M. HANN, his wife, Mortgagee, to Standard Federal Bank, a savings bank, now known as Standard Federal Bank, a savings bank, of Troy, Oakland County, Michigan, Mortgagee, dated April 6, 1979, and recorded in the office of the Register of Deeds for the County of Washtenaw, Michigan, on April 12, 1979, in Liber 1702, on page 284, of Washtenaw County Records, on which mortgage there is claimed to be due, at the date of this notice, for principal and interest, the sum of Fifty-Seven Thousand Five Hundred Seventy-Four and 68/100 Dollars (\$57,574.68).

And no suit or proceedings at law or in equity have been instituted to recover the debt secured by said mortgage or any part thereof. Now, therefore, by virtue of the power of sale contained in said mortgage and pursuant to the statute of the State of Michigan in such case made and provided, notice is hereby given that on Thursday, March 20, 1986, at ten o'clock A.M., local time, said mortgage will be foreclosed by a sale at public auction, to the highest bidder, at the west entrance to the County of Washtenaw County Building in the City of Ann Arbor, Washtenaw County, Michigan (that being the building where the Circuit Court for the County of Washtenaw is held), of the premises described in said mortgage, or so much thereof as may be necessary to pay the amount due, as aforesaid, on said mortgage, with the interest thereon at Ten percent (10.00%) per annum and all legal costs, charges and expenses, including the attorney fees allowed by law, and also any sum or sums which may be paid by the undersigned, necessary to protect its interest in the premises, which said premises are described as follows:

All that certain piece or parcel of land situate in the Township of Superior in the County of Washtenaw, and State of Michigan, and described as follows:

Lot Seven Hundred Thirty-Four (734), WOODLAND ACRES NO. 9, as recorded in Liber 21 of Plats, Pages 78, 79 and 80, of Washtenaw County Records.

During the six months immediately following the sale, the property may be redeemed.

Dated at Troy, Michigan, January 2, 1986.

STANDARD FEDERAL BANK, a savings bank

Mortgagee, RONALD J. PALMER, Attorney for Mortgagee, 2401 West Big Beaver Road, Troy, Michigan 48064

Feb 5-12-19-26-March 5

## Legal Notice 19

MORTGAGE SALE—Default having been made in the conditions of a mortgage made by RONALD RAY COLLETT and BRENDA COLLETT, his wife, to Mid-State Mortgage Corporation, a Michigan corporation, Mortgagee, dated March 17, 1978, and recorded on March 28, 1978, in Liber 143, on page 13, of the County of Washtenaw, Michigan, and assigned by said Mortgagee to Fleet Mortgage Corp., 1/4a Mortgage Associates, Inc., a Rhode Island corporation, by an assignment dated June 25, 1979, and recorded on August 23, 1979, in Liber 1724, on page 193, of Washtenaw County Records, Michigan, on which mortgage there is claimed to be due the sum of Twenty Two Thousand Two Hundred Forty Two and 69/100 Dollars (\$22,242.69), including interest at 8.75% per annum.

Under the power of sale contained in said mortgage and the statute in such case made and provided, notice is hereby given that said mortgage will be foreclosed by a sale of the mortgaged premises, or some part of them, at public venue, at the west entrance to the County Building in Ann Arbor, Michigan, at 10 o'clock A.M., Local Time, on Thursday, March 20, 1986.

Said premises are situated in the Township of Ypsilanti, Washtenaw County, Michigan, and are described as:

Lot 14, TURTLE CREEK SUBDIVISION, NO. 2, a part of the NE 1/4 of Section 14, T3S, R7E, Ypsilanti Township, Washtenaw County, Michigan, according to the plat thereof as recorded in Liber 18 of Plats, Pages 41 and 42, of Washtenaw County Records.

During the six months immediately following the sale, the property may be redeemed.

Fleet Mortgage Corp., Assignee of Mortgagee, HECHT & CHENEY, Sixth Floor Frey Building, Grand Rapids, Michigan 49503

Feb 5-12-19-26-March 5

MORTGAGE SALE—Default having been made in the conditions of a mortgage made by JERRY W. BAKER, a single man, to Liberty Mortgage Corporation, a Michigan corporation, dated November 22, 1978, and recorded on November 22, 1978, in Liber 184, on page 404, of the County of Washtenaw, Michigan, and now held through mesne assignments by Industrial National Bank of Rhode Island, a Rhode Island corporation, by an assignment dated May 6, 1982, and recorded on July 1, 1982, in Liber 184, on page 13, of the County of Washtenaw, Michigan, on which mortgage there is claimed to be due the sum of Twenty Two Thousand Two Hundred Forty Two and 69/100 Dollars (\$22,242.69), including interest at 8.75% per annum.

Under the power of sale contained in said mortgage and the statute in such case made and provided, notice is hereby given that said mortgage will be foreclosed by a sale of the mortgaged premises, or some part of them, at public venue, at the west entrance to the County Building in Ann Arbor, Michigan, at 10 o'clock A.M., Local Time, on Thursday, March 20, 1986.

Said premises are situated in the Township of Ypsilanti, Washtenaw County, Michigan, and are described as:

Lot 763, Westwillow Unit No. 10, a subdivision of part of Section 14, T3S, R7E, Ypsilanti Township, Washtenaw County, Michigan, according to the plat thereof as recorded in Liber 14 of Plats, Pages 46 & 47, of Washtenaw County Records.

During the six months immediately following the sale, the property may be redeemed.

Dated: February 3, 1986.

Fleet National Bank, Assignee of Mortgagee, HECHT & CHENEY, Sixth Floor Frey Building, Grand Rapids, Michigan 49503

Feb 5-12-19-26-March 5

MORTGAGE SALE—Default having been made in the conditions of a certain mortgage made by CHARLES JACKSON and JUDY E. JACKSON, husband and wife, to Ann Arbor Federal Savings and Loan Association, now known as Great Lakes

Call  
475-1371

To place your ad in  
**THE CHELSEA STANDARD**

## LYNDON TOWNSHIP BOARD OF REVIEW

Notice is hereby given to all persons liable to  
assessment for taxes in the

### TOWNSHIP OF LYNDON

County of Washtenaw, State of Michigan

That the Assessment Roll of said Township as  
prepared by the undersigned will be reviewed by  
the Board at

### LYNDON TOWNSHIP HALL

Corner of Old M-52 and North Territorial Road, on

**TUESDAY, MARCH 4, 1986**

from 9 a.m. to 12 Noon and 1 p.m. to 4 p.m.

Appeals and conferences with taxpayers  
will be heard on

**MONDAY AND TUESDAY  
MARCH 10-11, 1986**

Monday, from 9 a.m. to 12 noon and 1-4 p.m.

Tuesday, 1 to 4 p.m. and 7 to 10 p.m.

**WEDNESDAY, MARCH 19, 1986**  
from 7 p.m. to 10 p.m.

at which time upon request of any person who is assessed  
on said tax roll or of his or her agent and upon sufficient  
cause being shown, said Board of Review will cor-  
rect the assessment as to such property in such manner  
as will in their judgment make the valuation relatively  
just and equal. Such assessment tax roll as reviewed and  
approved by said Board of Review will be the assessment  
roll of said Township of Lyndon for the year 1986.

The County Board of Commissioners of Washtenaw  
County has proposed the following starting ratios for  
Lyndon Township for the year 1986: Agriculture, 53.9,  
Factor .9313; Commercial, 48.05, Factor 1.0406; In-  
dustrial, 48.05, Factor 1.0406; Residential, 49.13, Factor  
1.0177; Developmental, 49.18, Factor 1.0167.

**JOHN D. HURD, Supervisor**

Dated: Feb. 26, 1986

Standard Want Ads Get Quick Results!

## DEXTER TOWNSHIP BOARD OF REVIEW

Notice is hereby given to all persons liable to  
assessment for taxes in the

### TOWNSHIP OF DEXTER

County of Washtenaw, State of Michigan

That the assessment Roll of said Township as  
prepared by Ed Janicki, Township Assessor, will be  
reviewed by the Board of Review on Tuesday,  
March 4, 1986, 4:00 P.M., at

### DEXTER TOWNSHIP HALL

6880 Dexter-Pinckney Rd., Dexter, MI.

Appeals and Conferences with taxpayers will be heard on

**MONDAY, MARCH 10, 1986**

from 9:00 A.M. to 4:00 P.M.

**TUESDAY, MARCH 11, 1986**

from 3:00 P.M. to 9:00 P.M.

**\*THURSDAY, MARCH 20, 1986**  
from 2:00 P.M. to 6:00 P.M.

\*for those assessments changed, if needed

at which time the Board of Review will be in session.  
Upon request of any person who is assessed on said tax  
roll or of his or her agent and upon sufficient cause being  
shown, said Board of Review will correct the assessment  
as to such property in such manner as will in their judg-  
ment make the valuation just and equal.

Such assessment tax Roll as reviewed and approved by  
said Board of Review will be the assessment Roll of said  
Township of Dexter for the year 1986.

Tentative ratios are: Agriculture 52.50, factor .9524,  
Commercial 49.05, factor 1.0194, Industrial 50.00, factor  
1.0000, Residential 49.14, factor 1.0175, Developmental  
51.22, factor .9762.

A resident taxpayer may file his or her protest with the  
Board of Review by letter without an appearance by the  
taxpayer or his or her agent. The letter must be received  
by the first day of the Board of Review. (Monday, March  
7, 1986.)

The Dexter Township Board of Review will hear appeals  
by appointment and taxpayers or their agents may set  
the appointment by calling either 426-3767 or 426-2598  
during regular business hours and asking for Gail  
Drolett. Hopefully this procedure will eliminate tax-  
payers having to wait in line. Please call prior to March  
7, 1986. Do not leave appointment request on the  
recorder. Thank you.

**JAMES L. DROLETT, SUPERVISOR**

Feb. 9, 1986



AMY WEIR, a sixth grader at Beach Middle School, will be  
skating with the Arboretus novice precision team and in a group  
number, "The Twist," at the annual presentation of "Melody on  
Ice" presented by the Ann Arbor Figure Skating Club. Perfor-  
mances are slated Friday, Saturday and Sunday at Veterans Ice  
Arena in Ann Arbor.

## Figure Skating Club To Present 'Melody on Ice'

The Ann Arbor Figure Skating  
Club presents the 44th annual edi-  
tion of "Melody on Ice" at  
Veterans Ice Arena in Ann Arbor

Friday, March 7 at 7:30 p.m.;  
Saturday, March 8 at 7:30 p.m.;  
and Sunday, March 9 at 2:30 p.m.

National competitors, pre-  
cision teams and local skaters per-  
forming in a variety of numbers  
from Aerobics to Western will be  
featured.

Angelo D'Agostino, from Col-  
orado Springs, who placed fourth  
in the recent 1986 Senior Men's  
National Championships in New  
York, is the guest male soloist.  
Angelo is unique in that he  
choreographs most of his show  
programs himself. He has been a  
national competitor for several  
years, including the 1983 Junior  
Men's National Silver Medalist  
and the 1986 Eastern Senior Men's  
Silver Medalist. Originally from  
Chicago, Ill. Angelo is currently  
training in Colorado Springs  
under Carlo Fassi.

The 1986 National Junior Pairs  
Champions, Deveny Deck, of  
Superior township, and Luke  
Hohman, of Northville, will also  
be appearing. Having recently

passed their gold-pair test, they  
competed in the senior ranks of  
the 1986 National Championships  
and Skate America.

A juvenile precision team of  
young girls, ages 7 to 11, will be  
making their debut in a sharp  
military routine. And long-time  
favorites, the Hockettes, are  
celebrating their 28th season.

The 225 members of the Ann  
Arbor Figure Skating Club have  
contributed their time and talents  
in set design, choreography, and  
costuming to make this edition of  
"Melody on Ice" a special treat  
you won't want to miss.

Tickets are \$4 in advance, and  
\$4.50 at the door. Special Student  
Night rates (age 18 and under) on  
Friday are \$3 advance, and \$3.50  
at the door. Tickets are available  
from Ann Arbor Figure Skating  
Club members, Veterans Ice  
Arena, plus several store loca-  
tions.

Further information is  
available by calling Veterans Ice  
Arena, 761-7240.

Telephone your club news  
to 475-1371

## CATS

CHELSEA AREA  
TRANSPORTATION  
SYSTEM

Transportation for the Senior Citizen  
65 years & older, & the Handicapped.

Advance reservations are required. For morning  
transportation call the preceding afternoon between 1  
p.m. and 3 p.m. For afternoon transportation call in the  
morning from 9 a.m. to 11 a.m.

**CALL 475-9494**

between 9-11 a.m. or 1-3 p.m., Mon. thru Fri.

Service hours are 9 a.m. to 4:30 p.m. daily.

## NOTICE OF PUBLIC HEARING of the DEXTER TOWNSHIP ZONING BOARD

**MONDAY, MARCH 17, 1986**

8:00 PM

DEXTER TOWNSHIP HALL

6880 Dexter-Pinckney Rd.

### AGENDA:

1. Consider request from Huron-Clinton Metropolitan  
Authority to re-zone the following parcels located in sec-  
tions 12, 24 and 25 in Dexter Township from Rural  
Residential to Public Lands:

D 04-12-400-024 2 ac.  
D 04-12-400-025 .94 ac.  
D 04-24-200-010 21.25 ac.  
D 04-25-400-001 151 ac.  
D 04-25-100-005 6.10 ac.  
D 04-25-100-006 6.03 ac.  
D 04-25-100-010 5.21 ac.  
D 04-25-100-011 11.76 ac. +/-

2. Review the site plan approval granted Huron-Clinton  
Metropolitan Authority July 13, 1983.

3. Consider possible zoning text changes to define a  
satellite dish under Dexter Township Zoning Ordinance  
as a structure.

## DEXTER TOWNSHIP ZONING BOARD

Jerry Straub, 475-7648

## Chelsea Village Council Proceedings

February 18, 1986  
Regular Session.

The meeting was called to  
order at 7:30 p.m. by President  
Satterthwaite.

Present: President Satterth-  
waite, Clerk Rosentreter, Village  
Manager Weber and Assistant  
Village Manager Fahrner.

Trustees Present: Steele,  
Radloff, Finch and Merkel.

Trustees Absent: Fulks and  
Kanten.

Others present: Police Chief  
McDougall, Cecil Clouse, Dennis  
Petch, Charles Ritter, Brenda  
Foster, Kathleen Chapman,  
Brian Hamilton, Ron Martin,  
Gary Bentley, Luther Kusterv,  
Bob Valle and Anne Valle.

Motion by Radloff, supported  
by Finch, to approve the minutes  
of the regular session of  
February 4, 1986 as submitted.  
Roll call: Ayes all. Motion car-  
ried.

A public hearing was held on a  
proposed Zoning Ordinance  
Amendment to Regulate the  
Standards for Single-Family  
Dwellings.

**RESOLUTION**  
BE IT RESOLVED, AND IT IS  
HEREBY RESOLVED, that the  
Village Council of the Village of  
Chelsea does hereby adopt, ap-  
prove and promulgate Ordinance  
No. 79-MM, AN ORDINANCE TO  
AMEND THE CHELSEA VIL-  
LAGE ZONING ORDINANCE  
AND REGULATE THE STAND-  
ARDS FOR SINGLE-FAMILY  
DWELLINGS, and the Clerk of  
said Village be and is hereby  
directed to cause the same to be  
published in the Village of  
Chelsea, in The Chelsea Stand-  
ard, or any other paper of  
general circulation, and other-  
wise record said instrument  
within the Book of Ordinances.

Motion by Merkel, supported  
by Steele, to adopt the above  
resolution as read. Roll call:  
Ayes all. Motion carried. Resolu-  
tion adopted. (ORDINANCE NO.  
79-MM ATTACHED TO THESE  
MINUTES AS APPENDIX A.)

A public hearing was held on  
the proposed use of Federal  
Revenue Sharing Entitlement  
Period 17 Funds. It was the sug-  
gestion of the Village Manager to  
use the funds towards the  
village's parks and recreation  
system.

Fire Chief Hankerd submitted  
the Fire Department Report for  
the month of January 1986.

Zoning Inspector Harook  
discussed zoning matters per-  
taining to Taco Bell.

Assistant Manager Fahrner  
discussed the treatment plant  
flow sizing.

Motion by Radloff, supported  
by Steele, to advertise in The  
Chelsea Standard for bids on the  
1953 Ford digger truck. Roll call:  
Ayes all. Motion carried.

## Free Catalog Lists Government Books

The U.S. Government Printing  
Office has a free catalog of  
almost 1,000 of the government's  
bestsellers. As official sales  
agent for U.S. Government  
publications, the GPO stocks  
more than 15,000 titles, including  
550 subscriptions. To create the  
catalog, popular and general-  
interest titles were selected from  
this inventory. Featuring books  
on children, energy, gardening,  
history, space travel, and more,  
the illustrated, annotated catalog  
is designed to make government  
books more accessible to the  
general public.

The catalog is being made  
available to the public through a  
nation-wide public service an-  
nouncement campaign. Utilizing  
broadcast and print media, the  
PSAs present the scope and utility  
of government books and in-  
vite interested persons to write  
for a free catalog.

The "U.S. Government Books"  
catalog is part of an extensive  
program undertaken by the  
Government Printing Office to  
make Americans aware of the in-  
formation resources available to  
them through government pub-  
lications. The free catalog may be  
obtained by writing New Catalog,  
P.O. Box 37000, Washington, D.C.  
20013.

Please Notify Us  
In Advance of  
Any Change in Address

## PUBLIC AUCTION SALE STATE LAND

NOTICE IS HEREBY GIVEN, that pursuant to the provisions of Section 131 of Act 206,  
P. A. 1893, State Lands in Washtenaw County will be placed on the market by offering  
same for sale at public auction on

**MARCH 25, 1986 at 10:00 a.m.**

13th Floor Auditorium, City County Building  
2 Woodward Avenue, Detroit, Michigan 48226  
Sale Units 2338-2999

The right is reserved by the State of Michigan to reject any or all bids.  
Lists of property to be offered are available at the County Treasurer's Office or Lands  
Division, Department of Natural Resources, Box 30028, Lansing, Michigan 48909.  
Phone (517) 373-1250.

**DEPARTMENT OF NATURAL RESOURCES  
LANDS DIVISION**

BIDDER REGISTRATION 9:00 to 10:00 a.m.

## Robert Polens Named to Office By Lutheran Homes

Robert L. Polens, of Chelsea, has  
been elected vice-president of the  
executive committee of Bethesda  
Lutheran Home Board of Direc-  
tors.

The Lutheran home is a home,  
school and treatment center for  
650 mentally retarded children  
and adults in Watertown, Wis., 14  
group homes in nine states, and  
Faith Village, a 65-bed cottage  
and group home facility in Kan-  
sas City, Kan.

Polens has also been appointed  
to the program and planning  
committee.

Polens is a former secretary of  
the Bethesda board, and has been  
a board member since 1982. He is  
a transportation planner and is ex-  
ecutive director of the Ann Arbor-  
Ypsilanti Urban Area Transpor-  
tation Study. He has a bachelor's  
degree in architecture from the  
University of Michigan, and a  
master's degree in urban plan-  
ning from Wayne State University.

The first federal activity to pro-  
mote fair employment practices  
was the Fair Employment Prac-  
tice Commission in 1941, which  
sought to eliminate discrimina-  
tion in hiring in the defense in-  
dustry, according to "Labor  
First in America," a publication  
of the U. S. Department of Labor.

## DEXTER TOWNSHIP PUBLIC HEARING

DEXTER TOWNSHIP HALL

6880 Dexter-Pinckney Rd.

**TUESDAY, MARCH 11, 1986**

9:00 p.m.

To review the Flood Plain Study as it affects properties in  
Dexter Township in the areas of Big Portage and Little  
Portage Lakes, the Huron River, Silver Lake, Half Moon  
Lake, North Lake, Blind Lake and Losee Lake. Mr. Allen  
Birman will be present from the Chicago office of the  
Federal Emergency Management Agency (FEMA).

All interested area residents are invited and in par-  
ticular, long-time residents of the area.

## DEXTER TOWNSHIP

James L. Drolett, Supervisor

## SYLVAN TOWNSHIP BOARD OF REVIEW

Notice is hereby given to all persons liable to  
assessment for taxes in the

### TOWNSHIP OF SYLVAN

County of Washtenaw, State of Michigan

That the Assessment Roll of said Township as  
prepared by the undersigned will be reviewed by  
the Board of Review on Tuesday, March 4, 1986  
at 4:30 p.m.

### SYLVAN TOWNSHIP HALL

112 W. Middle St., Chelsea, Michigan

Appeals and conferences with taxpayers  
will be heard on

**Monday, March 10, 1986**

from 9-12 a.m. and 1-3 p.m.

**Tuesday, March 11, 1986**

4 p.m. to 10 p.m.

**Wednesday, March 12, 1986**

4 p.m. to 10 p.m.

the Board of Review will be in session. Upon request of  
any person who is assessed on said tax roll or of his or  
her agent and upon sufficient cause being shown, said  
Board of Review will correct the assessment as to such  
property in such manner as will in their judgment make  
the valuation relatively just and equal.

Such assessment tax roll as reviewed and approved by  
said Board of Review will be the assessment roll of said  
Township of Sylvan for the year 1986.

**STARTING RATIOS FOR 1986 ARE:**

Agricultural	56.08
Commercial	48.98
Industrial	49.80
Residential	49.89

**DONALD SCHOENBERG, Supervisor**

Dated: Feb. 19, 1986.

(Political Adv.)

# ONE GOOD TERM DESERVES ANOTHER



We citizens who are concerned about Chelsea's future are just as concerned about the 24 months ahead as we are about the Year 2000. We feel that the Village is fortunate to have an experienced president who has the loyalty to serve for a consecutive second term at a particularly critical time in village history. He not only has the insight gained in three years as a councilman and two years as president; he has a firm understanding of the needs of the hour.

Jerry Satterthwaite's re-election is challenged by a respected former president who, by his own public statements, is simply out of touch with the problems and solutions of today.

So perhaps our headline should have been:

## ONE GOOD TERM DESERVES ANOTHER IMMEDIATELY

As president of the village council, our chief elected official is in charge of a municipal enterprise that handles \$3.5 million a year. A large part of this is the resale of electricity and tax-supported services. But the basic budget of the village is just about \$1 million.

Each year, through his own distributorship, Jerry's firm delivers about 1 million gallons of petroleum products to nearly 600 local homes and industries, an enterprise which closely parallels the budget responsibilities of the village.

- He supports immediate action to expand and modernize our sewerage system with financial assistance from the EPA, and overseen by the DNR of Michigan.

- He has joined with the council in a long overdue pay raise for our capable Village Administrator.
- With council support, he has succeeded in helping the village to employ a highly qualified assistant administrator—a registered engineer who can more than save the village his salary each year through the elimination of costly engineering fees.
- Jerry believes in controlled growth of Chelsea with high employment rather than heavy population growth with widespread unemployment and urban social problems.
- He has assisted in the attraction of new industries to Chelsea and completion of the Chelsea Industrial Park.
- He has helped to bring village employees into a harmonious relationship with the village they serve.
- He was a force in bringing our landfill into compliance with state regulations, assuring Chelsea of more economical refuse removal for the next six years.
- He favors wholesome business development through the Downtown Development Association and cultural support for our historic Chelsea Rail Depot.

To retain the active services of this experienced and dedicated public servant, all you have to do next Monday is go to the polls and mark X next to the name of Jerry Satterthwaite who—knowing the especial needs of this hour—is willing to serve two terms in a row.



# Jerry Satterthwaite

This message paid for by  
**CITIZENS CONCERNED FOR CHELSEA'S FUTURE**

Jerry Satterthwaite, Chairman, 423 McKinley St.  
Home phone: 475-9237. Office phone: 475-8042

*Some of these endorsers live out in the townships but have business, social or cultural interests in the village that make them concerned about Chelsea's future.*

Lynn Boham  
Phil Boham  
Richard Borton  
Rosaleen Borton  
Bill Bott  
Sandra Brown  
Walter Brown  
Pat Clemons  
Tom Clemons  
Marion Connelly  
Will Connelly  
Susan Davis

Tom Davis  
Douglas Denison  
Marsha Denison  
Art Dils  
Arnold Fahrner  
Norman Fahrner  
Ann Feeney  
Michael Feeney  
Carol Ghent  
Jim Ghent  
Bob Hodder  
Daphne Hodder

Joyce Johnson  
Sam Johnson  
Judy McArthur  
Warren McArthur  
Ann Merkel  
Jack Merkel  
Mary Ann Merkel  
Tim Merkel  
Carolyn Monier  
Rick Monier  
Bill Nuffer

Donna Palmer  
George Palmer  
Herman Radloff  
Margaret Radloff  
Sally Tichnor Rendell  
Dale Schumann  
Janette Tobin  
Marty Tobin  
Dennis Turner  
Douglas Turner  
Marsha Turner



# Church Services

## Assembly of God—

**FIRST ASSEMBLY OF GOD**  
The Rev. Phil Farnsworth, Pastor  
Every Sunday—  
9:45 a.m.—Sunday school.  
11:00 a.m.—Worship service and Sunday school nursery for pre-schoolers.  
6:00 p.m.—Evening worship.  
Every Wednesday—  
7:00 p.m.—Christ's Ambassadors. Bible study and prayer.

## Baptist—

**GREGORY BAPTIST**  
The Rev. W. Truman Cochran, Pastor  
Every Sunday—  
9:45 a.m.—Sunday school.  
11:00 a.m.—Morning worship.  
6:00 p.m.—Young people.  
7:00 p.m.—Evening worship.  
Every Wednesday—  
7:00 p.m.—Youth group.

**FELLOWSHIP BAPTIST**  
The Rev. Larry Mattis.  
The Rev. Roy Harrison, pastors.  
262-7005

Every Sunday—  
3:00 p.m.—Worship service at the Rebekah Hall.

## Catholic—

**ST. MARY**  
The Rev. Fr. David Philip Dupuis, Pastor  
Every Sunday—  
8:00 a.m.—Mass.  
10:00 a.m.—Mass.  
12:00 noon—Mass.  
Every Saturday—  
12:00 noon-1:00 p.m.—Confessions.  
6:00 p.m.—Mass.

## Church of Christ—

**CHURCH OF CHRIST**  
1360 Old US-12, East  
David L. Baker, Minister.  
Every Sunday—  
9:30 a.m.—Bible classes, all ages.  
10:30 a.m.—Worship service. Nursery available.  
6:30 p.m.—Worship service. Nursery available.  
Every Wednesday—  
7:00 p.m.—Bible classes, all ages.  
First and Third Tuesday of every month—  
7:00 p.m.—Ladies class.

## Episcopal—

**ST. BARNABAS**  
2300 Old US-12  
(Directly across from the Fairgrounds)  
The Rev. Fr. Jerrold F. Beaumont, O.S.P.  
475-2000 or 475-3570  
Wednesday, March 5—  
7:30 p.m.—Mass.  
Sunday, March 9—Fourth Sunday in Lent.  
9:00 a.m.—Youth Inquirers.  
9:00 a.m.—Choir.  
10:00 a.m.—Morning prayer. Holy Eucharist immediately follows.  
11:00 a.m.—Morning coffee hour.  
Wednesday, March 12—  
7:30 p.m.—Mass.

## Lutheran—

**FAITH EVANGELICAL LUTHERAN**  
The Rev. Mark Porinsky, Pastor  
Wednesday, March 5—  
7:30 p.m.—Lent IV worship, "Pilate." Coffee by choir.  
8:45 p.m.—Choir rehearsal.  
Friday, March 7—  
Half day of school (Teacher In-Service).  
Sunday, March 9—  
9:00 a.m.—Sermon on "Stewardship, Sacrifice, Witnessing." Hebrews 13:15-16.  
10:00 a.m.—Sunday school for children.  
10:00 a.m.—Coffee hour.  
Monday, March 10—  
7:00 p.m.—Elder's Council.  
8:00 p.m.—Council.  
Wednesday, March 12—  
7:30 p.m.—Lent V worship, "Simon of Cyrene." Coffee by council.  
8:30 p.m.—Choir rehearsal.  
Principal, Ric Gibson 425-2875; Sunday school superintendent, Marty Straub, 475-3073; March Elders, Chuck McInturff, Jerry Straub; March Teller, Jim Jetele.

## OUR SAVIOR LUTHERAN

The Rev. Franklin H. Giebel, Pastor  
Every Sunday—  
9:00 a.m.—Sunday school and Bible class.  
10:30 a.m.—Worship service, with Holy Communion.  
**ST. JACOB EVANGELICAL LUTHERAN**  
12501 Rietveld Rd., Grass Lake  
The Rev. Andrew Bloom, Pastor  
Every Sunday—  
9:00 a.m.—Sunday school.  
10:10 a.m.—Divine services.

## ST. THOMAS LUTHERAN

Elsworth and Haas Rds.  
The Rev. John Nishe, Pastor  
Friday, March 7—  
Note: Change from previous week-end.  
7:00 p.m.—OHFC week-end starts.  
Saturday, March 8—  
OHFC all day. Youth singing, Bible study, witnessing, canvassing, nursing home visit.  
Sunday, March 9—  
9:15 a.m.—Coffee and donuts.  
9:30 a.m.—Sunday school and Bible class.  
10:45 a.m.—Worship.  
7:00 p.m.—Fellowship.  
7:30 p.m.—Film, "See You Sunday."  
Tuesday, March 11—  
6:30 p.m.—Catechism class.  
7:30 p.m.—Bible study at parsonage.  
Served To Serve.  
Wednesday, March 12—  
8:00 p.m.—Lenten worship at St. John's, Bridgewater.

## TRINITY LUTHERAN

5750 M-36, three miles east of Gregory  
William J. Trusen, Pastor  
Every Sunday—  
8:00 a.m.—Worship service.  
9:30 a.m.—Sunday and Bible school.  
10:45 a.m.—Worship service.

## ZION LUTHERAN

Corner of Fletcher and Waters Rd.  
The Rev. John R. Morris, Pastor  
Wednesday, March 5—  
1:30 p.m.—Lydia Circle.  
6:00 p.m.—Lenten supper.  
7:30 p.m.—Lent IV worship.  
Friday, March 7—  
7:00 p.m.—Vt retreat begins, continues through 9 a.m. Saturday.  
Saturday, March 8—  
Leadership seminar, Williston.  
9:30 a.m.—World Day of Prayer at First Methodist church.  
9:00-11:45 a.m.—8th grade VI. No 7th grade VI.  
Sunday, March 9—Fourth Sunday in Lent.  
9:00 a.m.—Sunday school.  
9:00 a.m.—Pastor's Adult Inquiry.  
10:15 a.m.—Worship.  
Tuesday, March 11—  
9:00 a.m.—Chelsea ministerial meeting.  
4:00 p.m.—Joy-makers.  
7:15 p.m.—Senior Choir.  
Wednesday, March 12—  
7:30 p.m.—Shuffleboard.  
8:00 p.m.—Lenten supper.  
7:30 p.m.—Lent V worship.

## Methodist

**CHELSEA FREE METHODIST**  
765 Werkner Rd.  
Marty Straub, Pastor  
Wednesday, March 5—  
Spring Arbor Minister's Conference, today through Friday.  
9:00 a.m.—Bible quiz.  
7:00 p.m.—Mid-week service.  
Saturday, March 8—  
6:00 p.m.—Bible quiz competition, Spring Arbor.  
9:00 p.m.—Marriage Encounter.  
Sunday, March 9—  
Koinonia fellowship.  
9:45 a.m.—Sunday school.  
11:00 a.m.—Morning worship.  
6:00 p.m.—Evening worship.  
6:00 p.m.—Dobson film, "Power in Pleading: The Young Child."  
Monday, March 10—  
Bill Gohard Pastor's Seminar, Detroit.  
Tuesday, March 11—  
7:30 p.m.—Growth group.  
Wednesday, March 12—  
6:00 p.m.—Bible quiz practice.  
7:00 p.m.—Mid-week service.

**SALEM GROVE UNITED METHODIST**  
320 Notten Rd.  
Donald Woolam, Pastor  
Every Sunday—  
9:00 a.m.—Church school.  
10:30 a.m.—Morning worship.

## FIRST UNITED METHODIST

The Rev. David Truran, Pastor  
Wednesday, March 5—  
3:30 p.m.—Beginning Bell Choir in the Social Center.  
3:30 p.m.—Glory Choir.  
3:30 p.m.—Praise Choir.  
6:30 p.m.—Rainbow Singers.  
7:15 p.m.—Tintinnabulators.  
8:00 p.m.—Chancel Choir.  
Saturday, March 8—  
9:30 a.m.—Youth Division Workers meeting in the Assembly Room, United World Day of Prayer in the Social Center.  
Sunday, March 9—  
8:15-8:30 p.m.—Crib Nursery opens.  
8:30 a.m.—Worship service, guest preacher the Rev. Allen B. Rice II.  
8:30 a.m.—Enrichment activities for preschoolers 2 years of age and older.  
9:00 a.m.—Kindergarten, first, and second graders leave worship service for their enrichment activities.  
9:45-10:45 a.m.—Church school classes for all ages.  
11:00 a.m.—Worship service.  
11:30 a.m.—Enrichment activities for preschoolers 2 years of age and older.  
11:30 a.m.—Kindergarten, first and second graders leave worship service for enrichment activities.  
12:00 noon—Fellowship and coffee.  
12:30 p.m.—Family movie and pizza party.  
6:00 p.m.—Senior High UMYF.  
Monday, March 10—  
10:00 a.m.—Church Women United Executive Committee.  
Tuesday, March 11—  
12:00 noon—Lenten study, Crippen Building.  
7:30 p.m.—Parish-Staff Relations Committee.  
Wednesday, March 12—  
3:30 p.m.—Praise Choir.  
3:30 p.m.—Glory Choir.  
6:00 p.m.—Lenten potluck.  
6:30 p.m.—Rainbow Singers.  
7:15 p.m.—Tintinnabulators.  
7:30 p.m.—United Methodist Women Executive Committee.  
8:00 p.m.—Chancel Choir.

## METHODIST HOME CHAPEL

Every Sunday—  
8:45 a.m.—Worship service.

## NORTH LAKE

**UNITED METHODIST CHURCH**  
1411 North Territorial Road  
The Rev. Sandra Willabee, Pastor  
Every Sunday—  
10:00 a.m.—Worship Service.  
11:30 a.m.—Fellowship hour, Sunday school.

## SHARON UNITED METHODIST

Corner Pleasant Lake Rd. and M-32  
The Rev. Evans Bentley, Pastor  
Every Sunday—  
10:00 a.m.—Sunday school.  
11:00 a.m.—Worship service.

## Mormon

**CHURCH OF JESUS CHRIST OF LATTER-DAY SAINTS**  
1320 Freer Rd.  
Wayne L. Wenzel, president  
Every Sunday—  
9:30 a.m.—Sacrament.  
10:40 a.m.—Sunday school.  
11:40 a.m.—Priesthood.

## Non-Denominational—

**CHELSEA CHRISTIAN FELLOWSHIP**  
337 Wilkinson St.  
Erik Hansen, Pastor  
Every Sunday—  
10:00 a.m.—Learning from God's word.  
10:30 a.m.—Morning worship, prayer, service, and Junior church.  
8:00 p.m.—Bible instruction and fellowship.  
Every Monday—  
7:00 p.m.—Faith, Hope and Love, (women's ministry). Location to be announced.  
Every Second Tuesday—  
7:00 p.m.—Royal Ranger Christian Scouting.  
Every Wednesday—  
7:00 p.m.—Bible study and prayer for special needs.

## CHELSEA CHRISTIAN MEN'S FELLOWSHIP PRAYER BREAKFAST

Chelsea Hospital Cafeteria  
Second Saturday Each Month—  
8:00 a.m.—Breakfast.  
8:30-10:00 a.m.—Program.

## CHELSEA FULL GOSPEL

1142 Jackson Rd.  
The Rev. Chuck Clemens, Pastor  
Every Sunday—  
10:00 a.m.—Sunday school.  
11:00 a.m.—Morning worship.  
6:30 p.m.—Evening worship.  
Every Wednesday—  
7:00 p.m.—Mid-week prayer and Bible study.

## CHELSEA HOSPITAL MINISTRY

Every Sunday—  
10:00 a.m.—Morning service, Chelsea Community Hospital Cafeteria.

**COVENANT**  
50 N. Freer Rd.  
The Rev. Ron Smeenge, Pastor  
Every Sunday—  
9:00 a.m.—Church school.  
10:30 a.m.—Worship service, child care provided.

**IMMANUEL BIBLE**  
145 E. Summit St.  
Ron Clark, Pastor  
Every Sunday—  
9:45 a.m.—Sunday school, nursery provided.  
11:00 a.m.—Morning worship, nursery provided.  
6:00 p.m.—Evening worship.  
Every Wednesday—  
7:00 p.m.—Family hour, prayer meeting and Bible study.

**MT. HOPE BIBLE**  
12854 Trist Rd., Grass Lake  
The Rev. Ken Bilsborrow, Pastor  
Every Sunday—  
10:00 a.m.—Sunday school.  
11:00 a.m.—Morning worship.  
6:00 p.m.—Evening service.  
Wednesday, March 12—  
7:00 p.m.—"Old Time Bible and Brass," continuing at this time through Saturday, March 15. Evangelist Mark Yates, Kelly Sensesing and wife Lois.

**NORTH SHARON BIBLE**  
Sylvan and Washburne Rds.  
The Rev. Timothy E. Booth, Pastor  
Every Sunday—  
10:00 a.m.—Sunday school.  
11:00 a.m.—Worship service.  
6:00 p.m.—Senior High Youth meeting.  
Youth choir.  
7:00 p.m.—Evening worship service; nursery available. All services interpreted for the deaf.

Every Wednesday—  
7:00 p.m.—Bible study and prayer meeting, nursery available. Bus transportation available: 426-7222.

## Presbyterian—

**FIRST UNITED PRESBYTERIAN**  
Unadilla  
John Marvin, Pastor  
Every Sunday—  
11:00 a.m.—Worship service.

## United Church of Christ—

**BETHLEHEM EVANGELICAL AND REFORMED**  
Freedom Township  
The Rev. Roman A. Reineck, Pastor  
Every Sunday—  
10:00 a.m.—Worship service.

**CONGREGATIONAL**  
121 East Middle Street  
The Rev. John Gibbon, Pastor  
Wednesday, March 5—  
7:00 p.m.—Mid-week Lenten service.  
Thursday, March 6—  
7:00 p.m.—Bible study, Luke 19: 1-10.  
Friday, March 7—  
7:00 p.m.—Wedding rehearsal.  
Saturday, March 8—  
1:00 p.m.—Wedding.  
Sunday, March 9—  
10:30 a.m.—Worship service and Communion.  
10:30 a.m.—Nursery for preschoolers.  
10:30 a.m.—Sunday school.  
11:30 a.m.—Coffee and fellowship gathering.

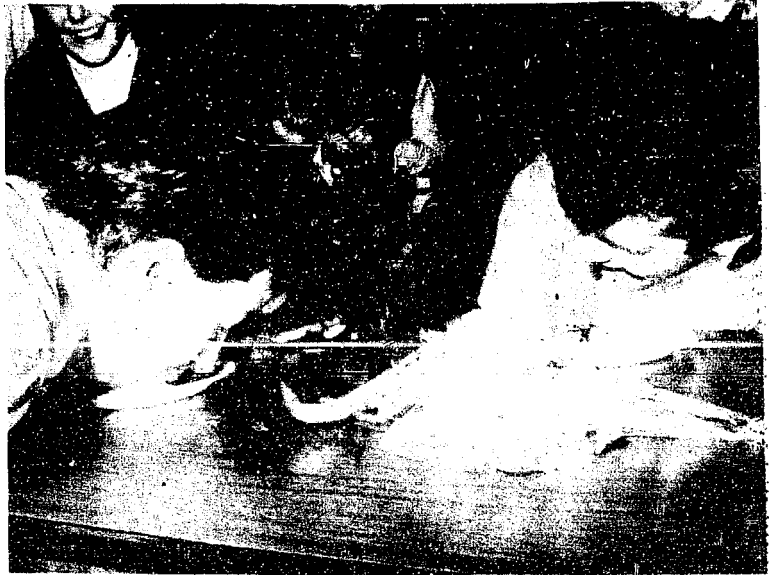
Tuesday, March 11—  
8:30 a.m.—Chelsea Ministerial fellowship at North Lake United Methodist church.  
8:00 p.m.—Board of Trustees.  
8:00 p.m.—Board of Deacons.  
Wednesday, March 12—  
11:30 a.m.—Association Cluster group at St. Andrews UCC, Dexter.  
7:30 p.m.—Mid-week Lenten service.  
7:30 p.m.—Bible study, Luke 24: 13-35.

**ST. JOHN'S**  
Rogers Corners, Waters and Fletcher Rds.  
The Rev. Theodore Wumler, Pastor  
Wednesday, March 5—  
8:00 p.m.—Lent IV worship.  
Every Sunday—  
10:30 a.m.—Worship service, Sunday school.

**ST. JOHN'S EVANGELICAL AND REFORMED**  
Francisco  
The Rev. Paul McKenna, Pastor  
Every Sunday—  
10:30 a.m.—Sunday school and worship service.  
First Sunday of every month—  
Communion.

**ST. PAUL**  
The Rev. Erwin R. Koch, Pastor  
Wednesday, March 5—  
10:11-10:30 a.m.—Adult Lenten discussion group.  
6:30 p.m.—Chapel and Youth choir.  
7:30 p.m.—Chancel Choir.  
Thursday, March 6—  
7:15 p.m.—Church Night—Building and Grounds, Christian Education, Church and Mission, Spiritual Life and Stewardship departments.  
Saturday, March 8—  
9:30 a.m.—World Day of Prayer at Chelsea United Methodist church.  
Sunday, March 9—  
9:00 a.m.—Church school classes.  
10:30 a.m.—Morning worship service.  
Rhapsody.  
10:30 a.m.—Church school classes.  
11:30 a.m.—Music Committee meeting.  
7:30 p.m.—Adult Lenten discussion group.  
Tuesday, March 11—  
1:00 p.m.—Women's Fellowship.  
7:30 p.m.—Church Growth Task Force meeting.

**Christian Scientist—**  
**FIRST CHURCH OF CHRIST SCIENTIST**  
1883 Washburn Ave., Ann Arbor  
Every Sunday—  
10:30 a.m.—Sunday school, morning service.



PETE YOUNG, right, checks out the style and grace of senior Jeff Mason during the ice cream eating contest last Thursday, one of the many Winter Carnival events at Chelsea High. Mason ended up winning this round, which also included competitors from the junior and freshman classes. Competitors were not allowed to use utensils, or their hands.

## DNR Taking Bids On Surplus Lands

The Department of Natural Resources (DNR) will offer nearly 1,453 acres and 4,774 platted lots of tax-reverted lands for sale, at public auction, on March 18, 19, 20, 25, and 27.

The lands for sale are in the following southeastern counties: Bay, Branch, Calhoun, Eaton, Genesee, Hillsdale, Huron, Ingham, Jackson, Lapeer, Lenawee, Livingston, Macomb, Monroe, Oakland, Saginaw, St. Clair, Sanilac, Shiawassee, Tuscola, Washtenaw, and Wayne.

Roland Harnes, DNR Lands Division Chief, says a total of 3,950 property sale units, determined surplus to State needs, will be offered during the auction.

The land sales will be conducted:

—March 18, at Jackson County Tower Building, 120 W. Michigan Ave., Jackson;

—March 19, at Commissioners' Auditorium, 1200 N. Telegraph Rd., Pontiac;

—March 20, County Commissioners' Room, Courthouse, 111 S. Michigan, Saginaw;

—March 25, 13th Floor Auditorium, City-County Building, 2 Woodward Ave., Detroit;

—March 27, Willard P. Harris Auditorium, County Building, 1101 Beach St., Flint.

Pre-registration is from 9 a.m. to 10 a.m.; all auctions will begin at 10 a.m. The State of Michigan will reserve mineral rights, rights of ingress and egress (access) to watercourses, and aboriginal antiquities (archaeological findings) on the lands for sale.

Bids as low as \$10 have been established for some sale units. Total minimum bids established for the entire sale equal \$4,190,450.

Sale booklets containing property descriptions are available now at all county courthouses in the southern Lower Peninsula and DNR District Offices, or through Gary Hartsuff, DNR Lands Division, Box 30028, Lansing 48909, phone (517) 373-1250.

Sales for counties in the Upper Peninsula and northern half of the Lower Peninsula are being scheduled for late summer or early fall of 1986.

## PASTORS OF CHURCHES ENCOURAGED TO ATTEND "OCCULTISM EXPOSED"

**SPEAKER: MELODY FALKNER**

Melody Falkner will speak on occultism in children's toys, games and rock music and display toys and games. Free literature available. Questions and answers will follow.

**SATURDAY, MARCH 15 at 6:00 p.m.**

**SPIRIT and LIFE FELLOWSHIP CHURCH**

2937 Dexter Trail Rd. (4 miles west of M-52)

STOCKBRIDGE

(Political Adv.)

## CANDIDATE FOR VILLAGE TREASURER

I would appreciate your vote in the

**VILLAGE ELECTION**

**MONDAY, MARCH 10, 1986**

**KATHLEEN CHAPMAN**

(Paid for by Kathleen Chapman)

(Political Adv.)

## VOTE for

**WILLIAM F. (BILL) STOREY**

**CHELSEA VILLAGE TREASURER**

**MARCH 10th**

Paid for by William F. Storey for Treasurer.

(Political Adv.)

## ELECT PHIL BOHAM TRUSTEE

**Monday, March 10**

• Lifelong Resident

• Active in the Community

• Solid Management Experience

Paid for by the Phil Boham for Council Committee

(Political Adv.)

## No Commitment to Institutions or other people

No axes to grind

No grudges

Just the interest of the people of Chelsea in mind.

**VOTE**

**GARY BENTLEY**

**FOR VILLAGE TRUSTEE**

**MONDAY, MARCH 10, 1986**

(Paid for by Gary Bentley for Village Trustee Committee)

(Political Adv.)

## Elect RICKIE MONIER for VILLAGE TRUSTEE

**Mon., March 10, 1986**

Paid for by Rickie Monier for Trustee Committee

(Political Adv.)

## COVENANT CHURCH

Corner of Old US-12 and Freer Road

**BEEF DINNER**

**Friday, March 14**

Serving 5, 6 and 7 p.m.

Adults \$5.00 Children under 12, \$2.50

Tickets available at Seltz's Tavern, Jack and Sons Barber Shop and any Covenant Church member.

**I asked Jesus, "Lord, how much do you love me?"**

Jesus replied: "This much."

Then He spread His arms on the cross, and died for me.

Forget Me Not, A Rose For Mary

—Millie Warner

(Political Adv.)

# + AREA DEATHS +

## Raymond E. Koch

61 N. Lima Center Rd.  
Dexter  
Raymond E. Koch, 61 N. Lima Center Rd., Dexter, age 72, died suddenly Feb. 24 at Chelsea Community Hospital. He was born June 7, 1913 in Lima township the son of Christen and Bertha (Seltz) Koch.

On March 26, 1941 he married Josephine Linde and she preceded him in death on Jan. 23, 1954. On June 18, 1960 he married Blanche Marshall who survives. Mr. Koch had been a life-long area resident and carpenter in the Chelsea area.

Surviving, in addition to his widow, is one son, Larry Raymond Koch of Chelsea; four grandchildren, Todd G. Koch, Jeanette L. Koch Blough, Ann Koch, and Jill Mari Koch; one great-granddaughter, Lauren Libbe Blough; one brother, Roy Koch of Chelsea; one sister, Irene Knapp of Manchester; and several nieces and nephews. He was preceded in death by a brother, Earl, who died in WW-II.

Also surviving are three step-children, Gene Owens of San Antonio, Tex., Olga Lee Wolff of Petoskey, and Jack Owens of Huntsville, Ala.; two step-grandchildren Jimmy and Sherri Sanderson.

Funeral services were held Thursday, Feb. 27 at 1 p.m. from the Staffan-Mitchell Funeral Home with David L. Baker of the Chelsea Church of Christ officiating. A scripture service was held Wednesday at the funeral home with Deacon Richard Cesarz officiating. Burial was in Oak Grove Cemetery, Chelsea.

## Rachel Mae Howard

805 W. Middle St.  
Chelsea  
Rachel Mae Howard, 805 W. Middle St., Chelsea, age 85, died Feb. 25, at the Methodist Home where she had been a resident since April 1982.

She was born Sept. 28, 1900 in Rollette, N.D., the daughter of Dougald and Flora Mae (Braley) McKeller. She was married to James O. Howard on Aug. 30, 1944 in Detroit. He preceded her in death in 1947.

Mrs. Howard was a graduate of the University of Michigan, receiving a teaching degree and had taught school in the rural area around Saginaw, in Allen Park and for 16 years in the Huron Valley School System.

She was a former resident of Milford and was a member of the Milford United Methodist church. While attending the University of Michigan she worked for the Grand Trunk Railroad.

Surviving are two brothers, Alvin McKeller of Rose City, and Angus McKeller of Royal Oak; two sisters, Mrs. Mabel Fisher of Livonia and Mrs. Helen Whitman of San Diego, Calif., and several nieces and nephews.

Memorial services were held Saturday, March 1 at 11 a.m. from the Chapel of the Chelsea United Methodist Retirement Home with the Rev. James Simmons, chaplain, officiating. Burial was in Lane Heights Cemetery, Lupton. Arrangements were by the Staffan-Mitchell Funeral Home, Chelsea.

## Stratton Lloyd Rademacher

200 N. Freer Rd.  
Chelsea  
Stratton Lloyd Rademacher, 200 N. Freer Rd., Chelsea, age 23, died Feb. 27, at Munson Medical Center in Traverse City of injuries he received in an automobile accident.

He was born July 22, 1962 in Ann Arbor the son of William J. and Marlene M. (Heydlauff) Rademacher.

Stratt was graduated from Chelsea High school in 1980 and had graduated from Colorado State in December of 1985 with a BA degree in Speech Communications. He was a member of St. Mary's Catholic church of Chelsea.

He is survived by his mother and father, William J. and Marlene M. Rademacher of Chelsea; one brother, William B. Rademacher of Norfolk, Va.; one sister, Laura L. Rademacher, Emerson, N. J.; his maternal grandmother, Mrs. Lloyd (Leona) Heydlauff of Chelsea; two uncles and aunts, George and Carol Heydlauff of Chelsea, and Tom and Carol Rademacher of Clarkston. He is also survived by several cousins.

Mass of the Resurrection was held Monday, March 3, at 11 a.m. from St. Mary's Catholic church with the Rev. Fr. Philip Dupuis and Deacon Richard Cesarz officiating. The rosary was recited Sunday evening at 7 from the Staffan-Mitchell Funeral Home. Expressions of sympathy may be made to Strat Rademacher Memorial Scholarship Fund. Burial was in Mount Olivet Cemetery, Chelsea.

## James Schnaidt

650 Island Lake Rd.  
Chelsea  
James N. Schnaidt, 650 Island Lake Rd., Chelsea, died suddenly Monday, Feb. 24 at Henry Ford Hospital in Detroit.

He was born June 8, 1925 in Detroit, the son of Henry and Mildred (Floyd) Schnaidt. On Sept. 6, 1947 he married Adelaide Saladonis in Detroit, and she survives.

Other survivors include his mother, Mildred, of Deland, Fla.; four sons, Daniel, of Chelsea, Michael, of Toledo, James J., of Ann Arbor, and Matthew, at home; two sisters, Mrs. Maren Peers, of Florida, and Mrs. Dolores Post, of St. Clair Shores; eight grandchildren, and several nieces and nephews.

Mr. Schnaidt was a member of St. Mary's Catholic church and was employed at Chrysler Corp. in Highland Park at the time of his death.

Mass of the Resurrection was held Thursday, Feb. 27 at St. Mary's Catholic church, with the Rev. Fr. David P. Dupuis and Deacon Richard Cesarz officiating. Burial followed at Mount Olivet Cemetery. Rosary was recited Wednesday, Feb. 26 at the Cole-Burghardt Funeral Chapel.

Memorial contributions may be made to the Michigan Association for Children and Adults with Learning Disabilities in Ann Arbor.

## W. Allen Kaiser

13748 Bramble Brae Dr.  
North Lake, Gregory  
W. Allen Kaiser, 13748 Bramble Brae Dr., North Lake Gregory, age 80, died Tuesday morning, Feb. 25 at Chelsea Community Hospital. He was born Feb. 2, 1906 in Reed City, the son of John and Minnie Mae (Stacey) Kaiser.

On April 7, 1931 he married Rosemary Ann Bergerson (Bobbie) and she preceded him in death on May 13, 1974.

Mr. Kaiser had been a resident of North Lake since 1950 and was a member of Inverness Country Club and was an active area bowler.

Mr. Kaiser was retired from Rockwell International. Surviving are two sons, Joseph Frederick Kaiser of North Street, Mich., and Gene A. Kaiser of Chelsea; three grandchildren, Stephen, Jeffery and Janae. He was preceded in death by a brother, Robert.

Funeral services were held Saturday at 1 p.m. from the Staffan-Mitchell Funeral Home with the Rev. Sonda Willobee of the North Lake United Methodist church officiating.

## Violet Merrill

805 W. Middle St.  
Chelsea  
Violet Hazel Merrill, 92, 805 W. Middle St., Chelsea, died Feb. 27 at the Chelsea United Methodist Home.

She was born May 8, 1893 in Bradford, Ont., Canada, the daughter of Frank and Flora (Cowherd) Merrill.

She is survived by her sister-in-law, Mrs. Elizabeth H. Merrill, of Farmington Hills.

She had lived in Chelsea since August 1977. She was a member of the United Methodist church of Royal Oak.

Graveside funeral services were held Friday, Feb. 28 at White Chapel Cemetery, Troy, with the Rev. James Simmons, chaplain of the Chelsea United Methodist Home, officiating.

Memorial contributions may be made to Chelsea United Methodist Home.

Arrangements were made by the Cole-Burghardt Funeral Chapel.



A son, Jason, Feb. 28, at St. Joseph Mercy Hospital, Ann Arbor, to Jim and Linda Kalmbach. Grandparents are Paul and Ellen Kalmbach of Chelsea and Robert and Bette Christie of Farmington Hills.

A son, Ryan Dean, Feb. 19, at University of Michigan Women's Hospital, to Terry and Robbin Lundquist of Grass Lake. Maternal grandparents are Bobby and Phyllis Mephram of Clayton. Paternal grandparents are Roy and Jackie Lundquist of Britton. Ryan has two sisters, Elizabeth, 10, and Stephanie, 5.

## Parent-Teacher Conferences Slated

Thursday Afternoon

Parent-teacher conferences will be held at North, South and Beach schools on Thursday, March 6, from 3:30 p.m. until 7:30 p.m. The high school staff will be involved in curriculum work during this period.

School will be in session for only a half-day on Friday, March 7; for all students. School will be dismissed as follows on that day: elementaries, 11 a.m.; middle school, 11:10 a.m.; high school, 11:15 a.m.

Please Notify Us  
In Advance of  
Any Change in Address



WITH CHOCOLATE ICE CREAM dripping off his face, Jeff Mason was declared the winner of last week's ice cream eating contest during the Thursday lunch hour. Mason clobbered his opponents, as he downed the ice cream using nothing but his mouth. Utensils and hands were not allowed. It was all part of the annual Winter Carnival at the high school. A variety of activities and competitions were planned for each day, pitting the classes against each other.



LEAP YEAR BABY John Weinitz celebrated his 82nd birthday last week, which, in leap years, makes him 20½ years old. Weinitz managed the Chelsea Community Fair Service Center from 1971 through 1984.

## Cribbage Tourney Starts March 11 At VFW Hall

Chelsea area cribbage players will hold their annual tournament beginning March 11 at the VFW Hall, 105 N. Main St.

Registration will begin at 6:30 p.m. followed by tournament play at 7.

Players will play 10 games against 10 opponents each of the three nights, March 11, 18, and 25. Winners of the highest number of games and points at the completion of the three qualifying nights will play head-to-head matches in the April 1 finals.

It will be an open tournament with trophies only for the top finalist. A small entry fee is required to defray costs. Snacks and free coffee will be provided.

For more information about the tournament contact Fremont Boyer, at 475-1408, or Gini Boyer, at 475-7143.

Telephone your club news to 475-1371

State Licensed and Insured

**JERRY HANSEN & SONS**  
ROOFING & SIDING COMPANY

Phone (313) 994-4232  
P. O. Box 2123, Ann Arbor, Mich. 48106

ALL TYPES OF ROOF REPAIRS SIDING GUTTERS  
DOWNSPOUTS INSURANCE WORK

27 Years Experience

**K. of C. FISH FRY FRIDAYS** Serving from 5 to 8 p.m.  
Feb. 14, 21, 28  
March 7, 14, 21

ST. MARY'S SCHOOL HALL  
400 Congdon St.  
Chelsea

**DEEP FRIED FISH**  
French Fries, Slaw, Roll & Butter  
ADULTS: \$4.00  
CHILDREN: (under 12) \$2.50  
All you can eat (this order only)

**BAKED FISH**  
Vegetables, Slaw, Roll & Butter  
Adult Dinners Only \$4.50

Have You Played  
**TIC TAC TOE**  
Michigan's New Instant Game  
Today

INSTANT LOTTERY TICKETS \$1 ea.

LOSER'S DRAWING EVERY SATURDAY  
Weekly Drawing... 5 Free Tickets  
Monthly Drawing... 10 Free Tickets

**CAVANAUGH LAKE STORE**  
163 CAVANAUGH LAKE RD.  
OPEN: 6 a.m.-8 p.m., M-Th/6 a.m.-9 p.m., F/7 a.m.-9 p.m. Sat/7 a.m.-7 p.m. Sun.

## L. Estleman Has 21st Book Published

Houghton Mifflin Co. has announced the publication of area writer Loren D. Estleman's latest Amos Walker detective novel, "Every Brilliant Eye."

The book is Estleman's 21st published novel and the sixth in his series about the Detroit private eye. In this adventure, Walker accepts an assignment from the Detroit News to look for his friend, Barry Stackpole, a crime columnist who has disappeared while investigating charges of corruption in the Detroit police department. Along the way Walker discovers things about his friend's past, and about his own, that he never knew.

"Sugartown," the fifth Amos Walker mystery, was recently reissued in paperback by Fawcett Books.

"Every Brilliant Eye" has begun to appear in area stores, including the Little Professor Book Center in Ann Arbor's Westgate shopping mall and Borders Books on State St., Ann Arbor.

Both Mayans & Aztecs believed that chocolate had the ability to prolong life after death.

(Political Adv.)

**ELECT**  
**CHARLES RITTER**  
**VILLAGE PRESIDENT**  
**MARCH 10, 1986**  
SUPPORT DENNIS PETSCH - GARY BENTLEY  
ROSEMARY HAROOK

(Paid for by committee to elect Charles Ritter, Charles Ritter Chairman.)

**FOR PROFIT**

**FEED**

See us for feed needs!

**Feed Formulas Tested, Proved To Get Results**  
Extra proteins, vitamins and minerals in proper balance, scientifically blended, make our feeds real profit producers for you.

**Farmers' Supply Co.**  
Phone 475-1777

**PALMER puts YOU in the driver's seat for LESS**

**WASHTENAW COUNTY'S NEWEST Dealer**

1986 RANGER  
PALMER PRICED \$5795\*\* '121\*\* PER MO.

1986 MUSTANG  
PALMER PRICED \$6695\*\* '139\*\* PER MO.

1986 TAURUS WAGON  
PALMER PRICED \$10,299\*\* '206\*\* PER MO.

**SERVICE OPEN SATURDAY**

1986 AEROSTAR WAGONS & VANS  
PALMER PRICED \$8650\*\* '157\*\* PER MO.  
7 TO CHOOSE FROM

**LIFETIME SERVICE GUARANTEE**

**PALMER** FORD MERCURY

Open Mon.-Thurs. 'til 8, Sat. 'til 1 p.m. • SERVICE OPEN SATURDAY, TOO.  
CHelsea Just minutes away. 1-84 to M-24 North 1 1/2 miles downtown 475-1301



KRISTINA STEFFENSON was one of two Chelsea High school soloists to participate in the district Solo and Ensemble Festival at Eastern Michigan University Feb. 22. Kristina was a division I winner, along with The Contemporaries. Not pictured is Tana Hermsillo, who was a division II winner along with the Madri-Guys.

## Susan Overdorf Is Finalist in Merit Scholarship Listing

Chelsea High school senior Susan Overdorf has been named a finalist in the competition for a National Merit Scholarship.

Fewer than one half of one percent of all high school seniors become finalists for the \$2,000 scholarships.

The award is based on high school grade point average, and performance on the Preliminary Scholastic Aptitude Test (PSAT) and the Scholastic Aptitude Test (SAT).

Approximately 43 percent of the finalists will actually receive the 1,800 scholarships offered.

Additional scholarships will be awarded to students meeting preferential criteria of sponsors who support the awards.

The National Merit Scholarship program is the largest of its kind. Students recognized as finalists are usually recruited heavily by the nation's premier colleges and universities.

The program receives no governmental support. It is financed by grants from more than 600 independent sponsors.

Cub bears are born toothless, fur-less and blind, and often weigh less than a pound, says National Wildlife's Ranger Rick magazine.



SUSAN OVERDORF



Because of the moon's tidal drag, days are increasing irregularly at the average rate of about a millisecond per century. Some of course, seem to have increased by much more than that.

## Bob Torres Nominated for West Point

Bob Torres, a senior at Chelsea High school, has been nominated for an appointment to the U.S. Military Academy at West Point by Congressman Carl D. Pursell.

Pursell made a total of seven nominations to the various service academies. The nominations were based on a number of criteria, including the recommendation of his citizen advisory panel.

The nomination is a key step in Torres' bid to win a spot at West Point. The school will make its final decision soon, according to Chelsea High school counselor Chris Dimanin.

## Three CHS Seniors Join U. S. Navy On Delayed Entry

Three Chelsea High school seniors have entered the U.S. Navy's Delayed Entry Program and will report for duty later this year at the Naval Training Center in Great Lakes, Ill.

Todd M. Bauer has enlisted for six years, with guaranteed training as a sonar technician, according to the Navy Recruiting Station in Ann Arbor. He will report for duty July 23.

Christopher J. Miller has enlisted for six years with guaranteed training as a machinist mate in the nuclear power program. He will report July 23.

Gary W. Johnson will report Sept. 23 to begin training as a gas turbine technician. He has also enlisted for six years.

## THE CHELSEA STANDARD

300 N. Main Ph. 475-1271

### Your Wedding Stationery Headquarters

See us for a complete selection of invitations in every price range. We also have bridal books, reception items, napkins and attendant's gifts. We feature the BRIDE & GROOM stationery line by McPhersons and our trained bridal consultant will be glad to help you.



## HISTORICAL - PATRIOTIC DATES

Compiled By VFW Post 4076

- March 4, 1789—First Federal Congress met, in New York City.
- March 4, 1791—Vermont admitted to the Union, 14th state.
- March 4, 1865—Abraham Lincoln's last inaugural address. Assassinated April 14, 1865.
- March 5, 1770—Boston Massacre. (Battle of King Street)
- March 5, 1953—USSR Premier Joseph Stalin died in Moscow.
- March 7, 1849—Luther Burbank, agricultural researcher, born in Lancaster, Mass.
- March 7, 1876—Alexander Bell patented first telephone.
- March 10, 1862—First U. S. paper money issued for general circulation.
- March 10, 1864—U. S. Grant made Union Army Commander-in-Chief.

Subscribe to The Chelsea Standard!

SAVE NOW ON SELECTED GE MAJOR APPLIANCES!



# INVENTORY CLEARANCE

HURRY—LIMITED TIME OFFER!

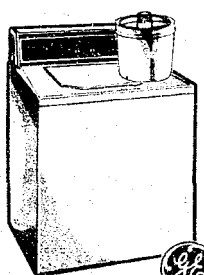
### GLASS SHELVES REFRIGERATOR



Model TBX18KG  
17.7 cu. ft. capacity; 5.01 cu. ft. freezer. Adjustable glass shelves. Energy saver switch. Spacemaker™ door holds 6-packs. Covered meat pan. Equipped for optional icemaker.

WAS \$749.95  
NOW \$649.95  
SAVE \$100

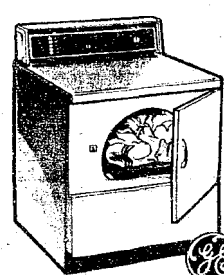
### EXTRA LARGE CAPACITY AUTOMATIC WASHER



Model WWA8324G  
Mini-Basket™ tub for small loads and delicates. 2 wash/spin speeds. 3 cycles including permanent press. 4 water level selections.

WAS \$519.95  
NOW \$429.95  
SAVE \$90

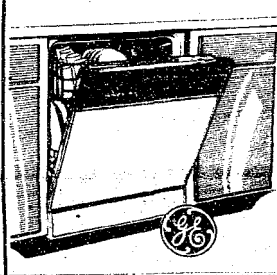
### HEAVY DUTY ELECTRIC DRYER



Model DDE7500G  
5 cycles including permanent press/knits. Automatic dry control dryer with variable end-of-cycle signal. Removable up-front lint filter.

WAS \$439.95  
NOW \$349.95  
SAVE \$90

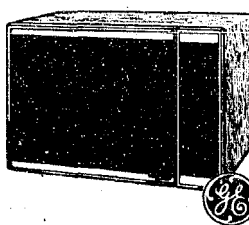
### 7-CYCLE POTSCRUBBER DISHWASHER



Model GSD900D  
Temperature Sensor System. 10-year full warranty on PermaTuf™ tub and door liner (ask for details). 3-level wash action. 3-way sound control. Energy saver drying option.

WAS \$499.95  
NOW \$419.95  
SAVE \$80

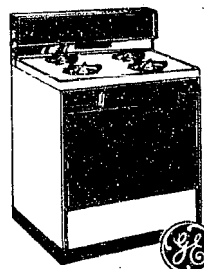
### COUNTERTOP MICROWAVE OVEN



Model RE967  
Dual Wave™ microwave system. Cooking Complete Reminder tells you cooking cycle is finished. Cooks by time or temperature.

WAS \$389.95  
NOW \$249.95  
SAVE \$140

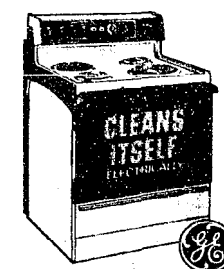
### 30" SELF-CLEANING OVEN GAS RANGE



Model JGP 27GEH I  
Black glass oven door and back splash. Automatic pilotless ignition. Clock, minute timer and automatic oven timer. Waist-high broiler with porcelain enamel finished broiler pan and rack.

WAS \$849.95  
NOW \$759.95  
SAVE \$90

### SELF-CLEANING OVEN ELECTRIC RANGE



Model JBP26GH  
Porcelain enamel finish drip pans. Black glass window oven door with towel bar handle. Two 8", two 6" plug-in Calrod® surface units. Automatic oven timer, clock and signal buzzer.

WAS \$659.95  
NOW \$599.95  
SAVE \$60



## MORE THAN A PRODUCT

Written Warranty Protection. Prompt, Reliable Service. The GE Answer Center service. Convenient Credit. Do it Yourself Help.

GE. We bring good things to life.

## PAINT SALE



10% OFF

- ALL PITTSBURGH INTERIOR PAINTS
- MIN-WAX STAINS
- PAINT BRUSHES, ROLLERS, PANS & DROP CLOTHS

Due to popular demand we are extending our sale until March 15, 1986.

## CHELSEA HARDWARE

110 S. Main St., Chelsea Ph. 475-1121



Ask us about no down payment financing!

For Sales & Service . . .

# HEYDLAUFF'S

Open Mon. Evenings til 7:30 - T - Fri. til 5:30. Sat. til 4:00

113 N. Main St., Chelsea

Ph. 475-1221

